

Investigating the Meat Pathway as a Source of Human Nontyphoidal *Salmonella* Bloodstream Infections and Diarrhea in East Africa

John A. Crump,^{1,2,3,a} Kate M. Thomas,^{1,a} Jackie Benschop,⁴ Matthew A. Knox,⁴ David A. Wilkinson,⁴ Anne C. Midwinter,⁴ Peninah Munyua,⁵ John B. Ochieng,⁶ Godfrey M. Bigogo,⁶ Jennifer R. Verani,⁵ Marc-Alain Widdowson,^{5,7} Gerard Prinsen,⁸ Sarah Cleaveland,⁹ Esron D. Karimuribo,¹⁰ Rudovick R. Kazwala,¹⁰ Blandina T. Mmbaga,^{2,3} Emanuel S. Swai,¹¹ Nigel P. French,^{4,b} and Ruth N. Zadoks^{9,12,b}

¹Centre for International Health, University of Otago, Dunedin, New Zealand, ²Kilimanjaro Clinical Research Institute, Kilimanjaro Christian Medical Centre, Moshi, Tanzania, ³Kilimanjaro Christian Medical University College, Moshi, Tanzania, ⁴School of Veterinary Science, Massey University, Palmerston North, New Zealand, ⁵Division of Global Health Protection, US Centers for Disease Control and Prevention, Nairobi, Kenya, ⁶Centre for Global Health Research, Kenya Medical Research Institute, Kisumu, Kenya, ⁷Institute of Tropical Medicine, Antwerp, Belgium, ⁸School of People, Environment and Planning, Massey University, Palmerston North, New Zealand, ⁹Institute of Biodiversity, Animal Health, and Comparative Medicine, College of Medical, Veterinary and Life Sciences, University of Glasgow, Glasgow, Scotland, United Kingdom, ¹⁰College of Veterinary Medicine and Biomedical Sciences, Sokoine University of Agriculture, Morogoro, Tanzania, ¹¹Department of Veterinary Services, Ministry of Livestock and Fisheries, Dodoma, Tanzania, and ¹²Sydney School of Veterinary Science, University of Sydney, Sydney, Australia

Background. *Salmonella* Enteritidis and *Salmonella* Typhimurium are major causes of bloodstream infection and diarrheal disease in East Africa. Sources of human infection, including the role of the meat pathway, are poorly understood.

Methods. We collected cattle, goat, and poultry meat pathway samples from December 2015 through August 2017 in Tanzania and isolated *Salmonella* using standard methods. Meat pathway isolates were compared with nontyphoidal serovars of *Salmonella enterica* (NTS) isolated from persons with bloodstream infections and diarrheal disease from 2007 through 2017 from Kenya by core genome multi-locus sequence typing (cgMLST). Isolates were characterized for antimicrobial resistance, virulence genes, and diversity.

Results. We isolated NTS from 164 meat pathway samples. Of 172 human NTS isolates, 90 (52.3%) from stool and 82 (47.7%) from blood, 53 (30.8%) were *Salmonella* Enteritidis sequence type (ST) 11 and 62 (36.0%) were *Salmonella* Typhimurium ST313. We identified cgMLST clusters within *Salmonella* Enteritidis ST11, *Salmonella* Heidelberg ST15, *Salmonella* Typhimurium ST19, and *Salmonella* II 42:r- ST1208 that included both human and meat pathway isolates. *Salmonella* Typhimurium ST313 was isolated exclusively from human samples. Human and poultry isolates bore more antimicrobial resistance and virulence genes and were less diverse than isolates from other sources.

Conclusions. Our findings suggest that the meat pathway may be an important source of human infection with some clades of *Salmonella* Enteritidis ST11 in East Africa, but not of human infection by *Salmonella* Typhimurium ST313. Research is needed to systematically examine the contributions of other types of meat, animal products, produce, water, and the environment to nontyphoidal *Salmonella* disease in East Africa.

Keywords. Eastern Africa; bacteremia; diarrhea; food; *Salmonella*.

Nontyphoidal serovars of *Salmonella enterica* (NTS) were associated with an estimated >153 million illnesses and >56 000 deaths worldwide in 2010 [1]. NTS are a leading cause of bloodstream infection in sub-Saharan Africa [2], occurring often in the absence of diarrhea and carrying a case fatality

ratio of up to approximately 20% [3]. NTS bacteremia may be associated with human immunodeficiency virus (HIV) infection, recent or current malaria, and malnutrition [3]. Even after accounting for HIV-associated disease, the burden of NTS bacteremia in sub-Saharan Africa is substantial [4, 5]. The role of NTS in diarrheal disease in African countries is less clear. While approximately 9% of diarrheal illnesses and 11% of diarrheal deaths in the World Health Organization African region were attributed to NTS [1], NTS were isolated from <1% of stool samples from infants and young children with diarrhea at African sites in 1 large study of diarrheal disease [6]. Furthermore, it is common for NTS to be isolated no more often from the stool of infants and children with diarrhea than from community controls [6, 7]. Nonetheless, the acquisition of NTS in stool is likely to precede the development of invasive disease. While there has been relatively little work to characterize those NTS causing diarrheal disease in

Received 16 April 2020; editorial decision 26 July 2020; accepted 4 August 2020; published online August 10, 2020.

^aJ. A. C. and K. M. T. contributed equally to this work.

^bN. P. F. and R. N. Z. contributed equally to this work.

Presented in part: 10th International Conference of Typhoid and Other Invasive Salmonellosis, Kampala, Uganda, 4–6 April 2017.

Correspondence: J. A. Crump, McKinlay Professor of Global Health, Centre for International Health, University of Otago, PO Box 56, Dunedin 9054, New Zealand (john.crump@otago.ac.nz).

Clinical Infectious Diseases® 2021;73(7):e1570–8

© The Author(s) 2020. Published by Oxford University Press for the Infectious Diseases Society of America. This is an Open Access article distributed under the terms of the Creative Commons Attribution License (<http://creativecommons.org/licenses/by/4.0/>), which permits unrestricted reuse, distribution, and reproduction in any medium, provided the original work is properly cited. DOI: 10.1093/cid/ciaa1153

sub-Saharan Africa [8], *Salmonella* Typhimurium sequence type (ST) 313 [9] and several distinct clades of *Salmonella* Enteritidis ST11 [10, 11] strains predominate among bloodstream isolates from the region.

Whereas the typhoidal *Salmonella* serovars Typhi and Paratyphi A are human host-restricted, NTS are generally considered to have their reservoirs in nonhuman animals. Approximately half of global NTS infections are thought to be transmitted by food [1], with meat being a major food vehicle in high-income countries [12]. Unlike the situation in high-income countries, where foodborne disease surveillance is well developed and epidemiologic investigations inform control measures, there are few data on the major reservoirs, sources, and modes of transmission of NTS in Africa. The lack of epidemiologic data hampers control efforts. NTS may host generalists, such as *Salmonella* Typhimurium; exhibit degrees of host adaptation, such as the *Salmonella* Dublin adapted to cattle; or host restriction, such as the *Salmonella* Gallinarum restricted to poultry [3]. A whole-genome sequencing analysis of *Salmonella* Typhimurium ST313 and *Salmonella* Enteritidis ST11 strains has demonstrated the inactivation of some genes [9, 11] that have been speculated to indicate adaptation towards a narrower ecologic niche, such as the human host [9]. However, other evidence, such as the ability of *Salmonella* Typhimurium ST313 to infect and cause disease in poultry [13], is a counterpoint to human host restriction. Furthermore, from a food safety perspective, NTS from both healthy animals and those with disease have the potential to enter the food chain directly on meat or through the contamination of produce and water. Several livestock species in Africa carry *Salmonella* Typhimurium and other NTS serovars, including cattle and poultry [14–16].

Developments in enteric pathogen epidemiology, including cluster-based inference and source attribution models that use microbial subtyping data to assign human infections to animal and environmental sources are being used to understand NTS epidemiologies in high-income countries [17]. These approaches have been proposed to investigate sources of NTS disease in Africa [18]. In order to understand the potential contribution of poultry and red meat to human NTS disease in sub-Saharan Africa, we studied NTS from livestock to retail meat along the meat pathway and from human bloodstream and enteric infections in Tanzania and Kenya, East Africa, where movement of livestock, food, and people is common. We used multi-locus sequence typing (MLST) cluster analysis to determine the genetic relatedness of isolates, in order to investigate the contribution of meat to human NTS infections.

METHODS

Study Setting and Sampling

Meat pathway samples were collected from December 2015 through August 2017 in red meat slaughter and butcher facilities

and on poultry farms in the Arusha Urban, Moshi Municipal, and Moshi Rural Districts of northern Tanzania (Figure 1). As described elsewhere, 10 live poultry on each of 80 poultry farms were sampled by cloacal swab and their farm environments were sampled by boot socks (Solar Biologicals Inc., Newark, NJ); 4 farms per ward were randomly selected from 10 wards each in the Arusha Urban and Moshi Municipal Districts [19]. Red meat slaughter facilities in the Arusha Urban and Moshi Municipal Districts were sampled between 2 and 25 times. Red meat slaughter and butcher facility environment swabs were taken from knives and cutting equipment, cutting boards, walls, sinks, hanging rails, and other solid surfaces with sterile cellulose sponge swabs that had been predosed with 10 mL buffered peptone water in stomacher bags (TSC Technical Service Consultants, Lancashire, UK). Boot socks were used to sample the facility floors. Liquid runoff from open waste drains was also collected, where available, in 60 mL sterile containers. Cloacal swabs were taken from poultry using Amies transport swabs (Sterilin Ltd, Newport, UK). At least 25 g of intestinal samples from cattle and goats were taken after slaughter. Carcasses of cattle and goats were swabbed at both the rump and the shoulder using both dry cotton-tipped swabs and cotton-tipped swabs moistened with Maximum Recovery Diluent (Oxoid), following the New Zealand Ministry for Primary Industries National Microbiological Database program protocol [20]. Metal carcass swab templates (100 cm² for cattle and 25 cm² for goats) were sterilized with 70% ethanol wipes and allowed to air dry between swabbings. Swab heads were snapped off into empty sterile 30 mL universal tubes (Greiner Bio-One Ltd, Gloucester, UK) for transport. Cattle and goat meat were obtained from meat sellers in the Arusha Urban, Moshi Municipal, and Moshi Rural Districts, whose meat was supplied by study slaughter facilities. Approximately 500 g of the lowest hanging section of cattle and goat meat on display was purchased and placed in a resealable plastic bag. All samples were transported in a cooler box with freezer packs to Kilimanjaro Clinical Research Institute Biotechnology Laboratory in Moshi for testing on the day of sampling.

Equal numbers of human bloodstream and diarrheal disease NTS isolates were sought from Kibera, Nairobi, and Lwak Mission Hospital, western Kenya. NTS were sequentially isolated from 2007 through 2017 from an ongoing population-based infectious disease surveillance system operated by the Kenya Medical Research Institute in collaboration with the US Centers for Disease Control and Prevention [21]. Isolates were identified as described previously [22], frozen and shipped to the Kilimanjaro Clinical Research Institute Biotechnology Laboratory in tryptone soya broth with 20% glycerol, and stored at –80°C.

Isolation, Identification, Enumeration, and Antimicrobial Susceptibility Testing of *Salmonella* from the Meat Pathway

As described previously [19], isolation and identification of *Salmonella* was performed from meat pathway swabs, from

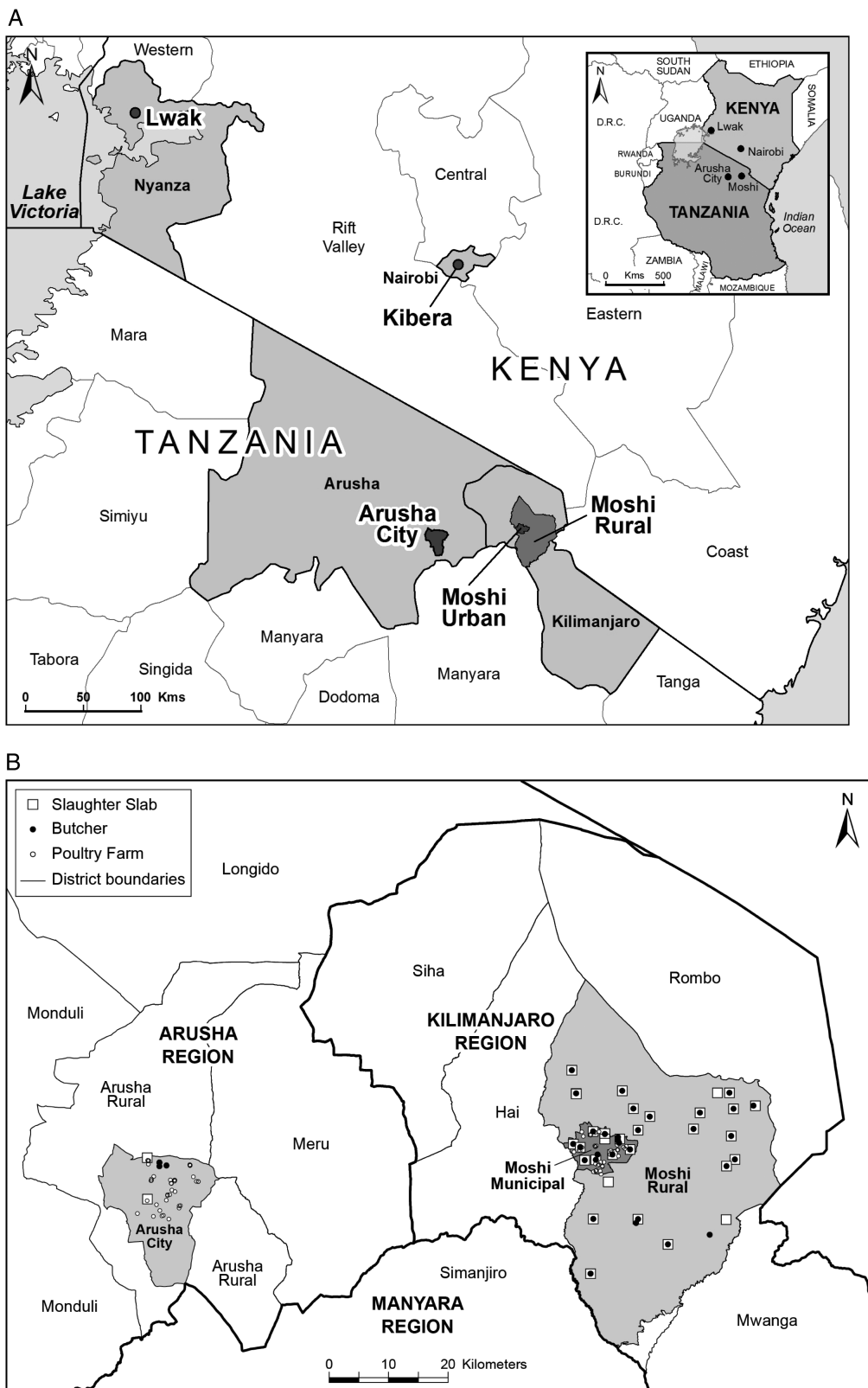


Figure 1. Map showing (A) data collection sites in Lwak and Kibera, Kenya, 2007–17, and (B) slaughter slab, butcher, and poultry farm locations sampled for nontyphoidal *Salmonella*, Arusha and Kilimanjaro Regions, northern Tanzania, 2015–17.

1 g intestinal samples and 25 g meat, to yield 1–5 presumptive *Salmonella* isolates identified per sample. Enumeration of *Salmonella* was performed on the day of sampling using a spiral plater (Wasp, Don Whitley, West Yorkshire, UK) for cloacal swabs, intestinal contents, meat samples, environmental samples, or a direct manual spread plate for carcass swabs. Xylose lysine deoxycholate agar (Oxoid) with 5 µg/mL novobiocin (Merck KGaA, Darmstadt, Germany) plates were inoculated, in duplicate, with 50 µl of freshly prepared homogenate. Plates were incubated overnight at 37 ± 2°C. Typical *Salmonella* colonies were counted manually and biochemically confirmed [19], and the number of *Salmonella* in the original sample was calculated. Routine phenotypic antimicrobial susceptibility testing was performed against amoxicillin/clavulanate, ampicillin, ceftazidime, ceftriaxone, chloramphenicol, ciprofloxacin, naladixic acid, and trimethoprim/sulfamethoxazole on environmental, poultry, and livestock isolates by disk diffusion, and interpreted to contemporary guidelines [23].

Molecular Confirmation and DNA Preparation of *Salmonella* Isolates

Salmonella isolates from livestock, poultry, and their environments from northern Tanzania and from human blood and stool from Kenya were shipped to ^mEpiLab, Hopkirk Research Institute, Massey University, Palmerston North, New Zealand. Following subculture, DNA was extracted from each isolate using the QiaAmp DNA minikit (Qiagen, Hilden, Germany). *Salmonella* isolates were confirmed by polymerase chain reaction targeting the *Salmonella* enterotoxin (*stn*) gene [24]. Libraries were prepared using an Illumina NexteraXT library preparation kit (Illumina, San Diego, CA) following the manufacturer's instructions and were submitted to New Zealand Genomics Limited, University of Otago, Dunedin, New Zealand, for whole-genome sequencing using a HiSeq 2 × 125-bp PE v4 instrument (Illumina).

Data Analysis

Illumina read data were cleaned using Trimmomatic version 0.38 [25]. Draft genomes were assembled using SPAdes version 3.11 [26]. Processed reads are publicly available on the National Center for Biotechnology Information Sequence Read Archive under BioProject ID PRJNA602741. Metadata are stored under BioSample accession numbers SAMN13905911–SAMN13906457 (Supplementary Table 1). Resistome and virulome profiles were assessed using ABRicate (<https://github.com/tseemann/abricate>) to query the ResFinder and the Virulence Factors (VFDB) databases [27, 28]. Annotation of antimicrobial resistance genes and resistance mechanisms was performed using the Resistance Gene Identifier algorithm web portal (RGI 5.0.0) and the comprehensive antibiotic resistance database (CARD 3.0.2) [29]. We employed criteria of “high quality/coverage” and “perfect and strict” hits only, and excluded “nudging of ≥ 95% identity loose hits to strict.”

Assembly statistics were compiled using seqkit [30] as part of the Nullarbor pipeline [31]. We identified 7 gene STs using MLST (<https://github.com/tseemann/mlst>) [32]. Core genome MLST (cgMLST) types and serovar information were predicted using SISTR [33]. Allelic profiles were clustered using globally optimal eBURST (goeBURST) [34] in phylogenetic inference and data visualization for sequence based typing methods (PHYLOViZ) [35]. A distance threshold (T), expressed as the number of allelic differences for which isolates form the same cluster, was applied and used to generate goeBURST clusters at all possible similarity thresholds. The Neighbourhood Adjusted Wallace Coefficient (nAWC) [36], that examines the congruence of partitions between adjacent similarity thresholds (T), was used for cluster definition (<https://github.com/theInnuendoProject/nAWC>), to assess cluster grouping dynamics. We identified cgMLST clusters reflecting basic units in the overall *Salmonella* population structure, defined as the earliest point at which 5 or more consecutive thresholds yielded nAWC values > 0.99. To visualize the *Salmonella* population structure, we generated a minimum spanning tree using R packages “igraph” [37], “MLSTar” [38], “RColorBrewer [39],” “gplots [40],” and “ape” [41]. A tree displaying the relationship between ST type, resistome, and genotype was generated using the Interactive Tree of Life [42]. The circular dendrogram was generated by calculating a distance matrix based on the pairwise number of core genome allele differences between isolates, and clustering was done using Ward's method [43]. ST diversity was estimated for each source by calculating the Simpson (1-D) and Shannon indices and plotting rarefaction curves. Both indices compare the diversity allowing for sample size, but the Shannon index places more emphasis on the richness, or number of different lineages, than the evenness, or how evenly distributed the different lineages are. The diversity indices with bootstrapped confidence intervals were calculated using the R package “vegetarian” version 1.2 [44], and the rarefaction curves were plotted using the R package “vegan” version 2.5–3 [45]. Human and meat pathway *Salmonella* Enteritidis strains were compared with previously described African and global lineages by cgMLST [11].

Research Ethics

This study was approved by the Tanzania National Institutes for Medical Research National Research Ethics Coordinating Committee, the Kenya Medical Research Institute Scientific and Ethics Review Unit, the University of Otago Human Ethics Committee, and the University of Glasgow College of Medical, Veterinary, and Life Sciences Ethics Committee.

RESULTS

Salmonella from Poultry and Red Meat Pathways and from Humans

Of 164 meat pathway samples yielding *Salmonella*, 33 (20.1%) were from poultry farms, 32 (19.5%) from ruminant slaughter

or butcher environments, 62 (37.8%) from cattle or their meat, and 37 (22.6%) from goats or their meat. Detailed information on specific sources and locations and enumeration among positive samples is shown in Table 1. The 164 meat pathway samples yielded 367 NTS isolates. Of 172 *Salmonella* isolates selected from humans, 90 (52.3%) were from the bloodstream and 82 (47.7%) were from the stool of patients with diarrhea.

Salmonella sequence types, serovars, and diversity

Of 539 NTS isolates, 91 (16.9%) were *Salmonella* Typhimurium and 78 (14.5%) were *Salmonella* Enteritidis (Supplementary Table 2). Of 72 allelic profiles identified among all isolates, 17 (23.6%) were of previously undescribed STs. The predominant STs were *Salmonella* Enteritidis ST11 (n = 78) and *Salmonella* Typhimurium ST313 (n = 62; Table 2; Supplementary Table 2). Of the 8 sample types, *Salmonella* Enteritidis ST11 was found in 7, being absent only from the slaughter and butcher environment, whereas *Salmonella* Typhimurium ST313 was found only from human stool and blood. *Salmonella* Orion ST639 was found in 4 exclusively nonhuman sources.

A comparison of the diversity of 7-gene MLSTs between different sample types, using rarefaction curves and the Simpson and Shannon indices, showed the highest diversity was associated with isolates from cattle and goat meat, followed by isolates from the red meat slaughter and butcher environment (Supplementary Table 3; Supplementary Figure 1). In contrast, the lowest diversity was associated with isolates from human blood. Blood isolates were significantly less diverse than the population isolated from human stool (Supplementary Table 3).

Core Genome Multi-Locus Sequence Types

The cgMLST analyses using nAWC resulted in a cutoff of 38 allelic differences and 157 separate clusters, ranging in size

from 1 to 65 isolates. The *Salmonella* population structure and cgMLST sequence types are shown in Figure 2. Similar to 7-gene MLST findings, sources of cgMLST clusters exhibited contrasting cluster-related patterns. Some cgMLSTs were found in all sample types, while others were restricted to human samples, or nonhuman samples. Within *Salmonella* STs 11, 16, 19, 27, and 1208, we identified cgMLST clusters that included both human and meat pathway isolates. When compared with previously described clades [11], *Salmonella* Enteritidis ST11 cgMLST clusters of similar human and meat pathway isolates belonged to the so-called global epidemic clade, rather than to Africa-restricted clades.

Antimicrobial Resistance and Resistome

Antimicrobial susceptibility results and resistome profiles for 49 resistance genes from 9 antimicrobial classes are shown in Supplementary Table 4. Phenotypic antimicrobial susceptibility results of human isolates are reported elsewhere [46]. Of 539 isolates, resistance genes to aminoglycosides were found in 133 (24.7%), beta-lactams in 105 (19.5%), chloramphenicol in 136 (25.2%), trimethoprim in 97 (18.0%), sulphonamides in 131 (24.3%), and tetracycline in 102 (18.9%). Resistance genes to fosfomycin, macrolides, and quinolones were present in ≤11 isolates. Human blood isolates had the widest range of resistance genes, with 69 (84.1%) of 82 isolates having genes for 5 or more resistance classes (Supplementary Figure 2). *Salmonella* bearing genes for resistance to 2 or more antimicrobial classes were found in 14 (35.9%) of 39 poultry cloacae, 13 (38.2%) of 34 poultry farm environment, 29 (32.2%) of 90 human stool samples, and <10% of other sample sources (Supplementary Figure 2; Supplementary Figure 3; Supplementary Figure 4). The median numbers of resistance gene classes found in isolates from human, poultry, and ruminant samples were

Table 1. Numbers of samples positive for *Salmonella* and enumeration, northern Tanzania, 2015-17

	Arusha Urban			Moshi Municipal			Moshi Rural			<i>Salmonella</i> enumeration, log CFU/sample		Total		
	n/	N	(%)	n/	N	(%)	n/	N	(%)	Median	(range)	n/	N	(%)
Poultry farm environment	5/	40	(12.5)	9/	40	(22.5)	-	-	-	3.6	(3.0-5.1)	14/	80	(17.5)
Poultry cloaca	8/	393	(2.0)	11/	402	(2.7)	-	...	-	3.7	(2.3-4.2)	19/	795	(2.4)
Slaughter and butcher environment	15/	108	(13.9)	10/	71	(14.1)	7/	48	(14.6)	3.7	(3.0-5.1)	32/	227	(14.1)
Cattle intestinal	1/	114	(.9)	2/	93	(2.2)	0/	128	(0)	2.3	(2.3-2.3)	3/	335	(.9)
Goat intestinal	0/	139	(0)	6/	84	(7.1)	1/	10	(10.0)	2.9	(2.6-3.3)	7/	233	(3.0)
Cattle carcass	4/	105	(3.8)	0/	50	(0)	1/	119	(.8)	0 ^a	(0-0)	5/	274	(1.8)
Goat carcass	0/	134	(0)	6/	40	(15.0)	0/	12	(0)	0 ^a	(0-0)	6/	186	(3.2)
Cattle meat	19/	180	(10.5)	21/	140	(15.0)	14/	143	(9.8)	3.4	(3.4-5.4)	54/	463	(11.7)
Goat meat	13/	118	(11.0)	10/	76	(13.2)	1/	11	(9.1)	3.9	(3.1-4.3)	24/	205	(11.7)
TOTAL	65/	1331	(4.9)	75/	996	(7.5)	24/	471	(5.1)	-	-	164/	2798	(5.8)

Data are from poultry cloaca, poultry farm environment, cattle and goat intestinal, carcass, meat, and slaughter and butcher environment samples in the Arusha Urban, Moshi Municipal, and Moshi Rural Districts, 2015-17.

Abbreviations: -, not applicable; CFU, colony forming units.

^aBelow level of enumeration in all samples.

Table 2. *Salmonella* sequence types and serovars, East Africa, 2007-17

<i>Salmonella</i> sequence type	<i>Salmonella</i> serovar	Sample type												Total				
		Poultry farm environment		Poultry cloaca		Slaughter and butcher environment		Cattle and goat intestinal samples		Cattle and goat carcass		Cattle and goat meat			Human feces		Human blood	
		n	(%)	n	(%)	n	(%)	n	(%)	n	(%)	n	(%)		n	(%)	n	(%)
11	Enteritidis	6	(26.1)	9	(27.3)	0	(0)	4	(28.6)	2	(18.2)	4	(4.9)	21	(35.6)	32	(39.5)	78
313	Typhimurium	0	(0)	0	(0)	0	(0)	0	(0)	0	(0)	0	(0)	17	(28.8)	45	(55.6)	62
639	Orion	0	(0)	0	(0)	7	(14.6)	2	(14.3)	2	(18.2)	22	(26.8)	0	(0)	0	(0)	33
1208	II 42:r-	0	(0)	0	(0)	5	(10.4)	0	(0)	4	(36.4)	18	(22)	1	(1.7)	0	(0)	28
19	Typhimurium	1	(4.3)	4	(12.1)	1	(2.1)	3	(21.4)	1	(9.1)	3	(3.7)	9	(15.3)	2	(2.5)	24
27	Saintpaul	2	(8.7)	0	(0)	2	(4.2)	0	(0)	2	(18.2)	11	(13.4)	1	(1.7)	0	(0)	18
16	Virchow	3	(13)	3	(9.1)	0	(0)	0	(0)	0	(0)	7	(8.5)	1	(1.7)	1	(1.2)	15
166	Newport	5	(21.7)	6	(18.2)	1	(2.1)	0	(0)	0	(0)	2	(2.4)	0	(0)	0	(0)	14
22	Braenderup	0	(0)	0	(0)	14	(29.2)	0	(0)	0	(0)	0	(0)	0	(0)	0	(0)	14
15	Heidelberg	0	(0)	0	(0)	0	(0)	0	(0)	0	(0)	4	(4.9)	9	(15.3)	1	(1.2)	14
912	Karamoja	0	(0)	0	(0)	7	(14.6)	2	(14.3)	0	(0)	5	(6.1)	0	(0)	0	(0)	14
198	Kentucky	2	(8.7)	7	(21.2)	0	(0)	0	(0)	0	(0)	4	(4.9)	0	(0)	0	(0)	13
2533	Durban	4	(17.4)	4	(12.1)	0	(0)	3	(21.4)	0	(0)	2	(2.4)	0	(0)	0	(0)	13
Unknown	II 1,4,12,27:e,n,x:e,n,x	0	(0)	0	(0)	11	(22.9)	0	(0)	0	(0)	0	(0)	0	(0)	0	(0)	11
TOTAL		23	(100.0)	33	(100.0)	48	(100.0)	14	(100.0)	11	(100.0)	82	(100.0)	59	(100.0)	81	(100.0)	351

Data are by sample source for types with at least 15 isolates, East Africa, 2007-17. Details of other sequence types and serovars are available in [Supplementary Table 2](#).

5 (interquartile range [IQR], 0-6), 0 (IQR, 0-3), and 0 (IQR, 0-0), respectively.

Virulome

Virulome profiles of the 539 isolates tested identified 153 virulence genes in total, of which 26 (17.0%) were considered major [28], including those associated with adherence (*sinH*, *ratB*, *pef*, *ipf*, genes associated with Type 1 fimbriae, *shdA*, and *misL*), magnesium uptake (*mgtBC*), resistance to an antimicrobial peptide produced by macrophages (*mig-14*) [47], serum resistance (*rck*), an oxidative stress defense protein (*sodCI*), and other proteins (*spv* and *cdtB*). The median (IQR) of major virulence genes found in isolates derived from human, poultry, and ruminant samples were 26 (19-26), 18 (17-18) and 13 (12-17), respectively ([Supplementary Figure 5](#)).

DISCUSSION

We demonstrated that NTS from East Africa, while relatively uncommon in cattle, goat, and poultry intestinal samples, were highly prevalent in the slaughter and butcher environment and in cattle and goat meat. *Salmonella* Enteritidis ST11 and *Salmonella* Typhimurium ST313 predominated among isolates from persons with bloodstream infection and diarrhea. By cgMLST, *Salmonella* Enteritidis ST11 from humans, belonging to the so-called global epidemic clade [11], and other less common *Salmonella* serovars and sequence types were clustered closely with strains isolated from the cattle, goat, and poultry meat pathway. However, *Salmonella* Typhimurium ST313 was not isolated from any meat pathway sample. Taken together, our findings suggest that the meat pathway may be an important source of human *Salmonella* Enteritidis ST11 infection in East Africa, but not of human *Salmonella* Typhimurium ST313 infection.

As in other regions, we confirm that in East Africa *Salmonella enterica* serovars Enteritidis and Typhimurium are leading causes of NTS invasive and diarrheal disease in humans [1]. Consistent with studies from high-income countries [48, 49], our cgMLST data suggest that both poultry and red meat may be sources of human *Salmonella* Enteritidis ST11 infections in East Africa. Notably, *Salmonella* Enteritidis ST11 that were highly similar between meat pathway and human disease isolates belonging to the so-called global epidemic clade rather than to Africa-restricted clades [11], leaving open questions about sources of Africa-restricted *Salmonella* Enteritidis ST11 clades. While we found *Salmonella* Typhimurium in all components of the meat pathway tested, no *Salmonella* Typhimurium ST313 were isolated from the meat pathway. While relatively few studies from African countries have examined *Salmonella* Typhimurium sequence types in nonhuman sources [50, 51], the existence of a nonhuman reservoir for *Salmonella* Typhimurium ST313, if any, remains to be established.

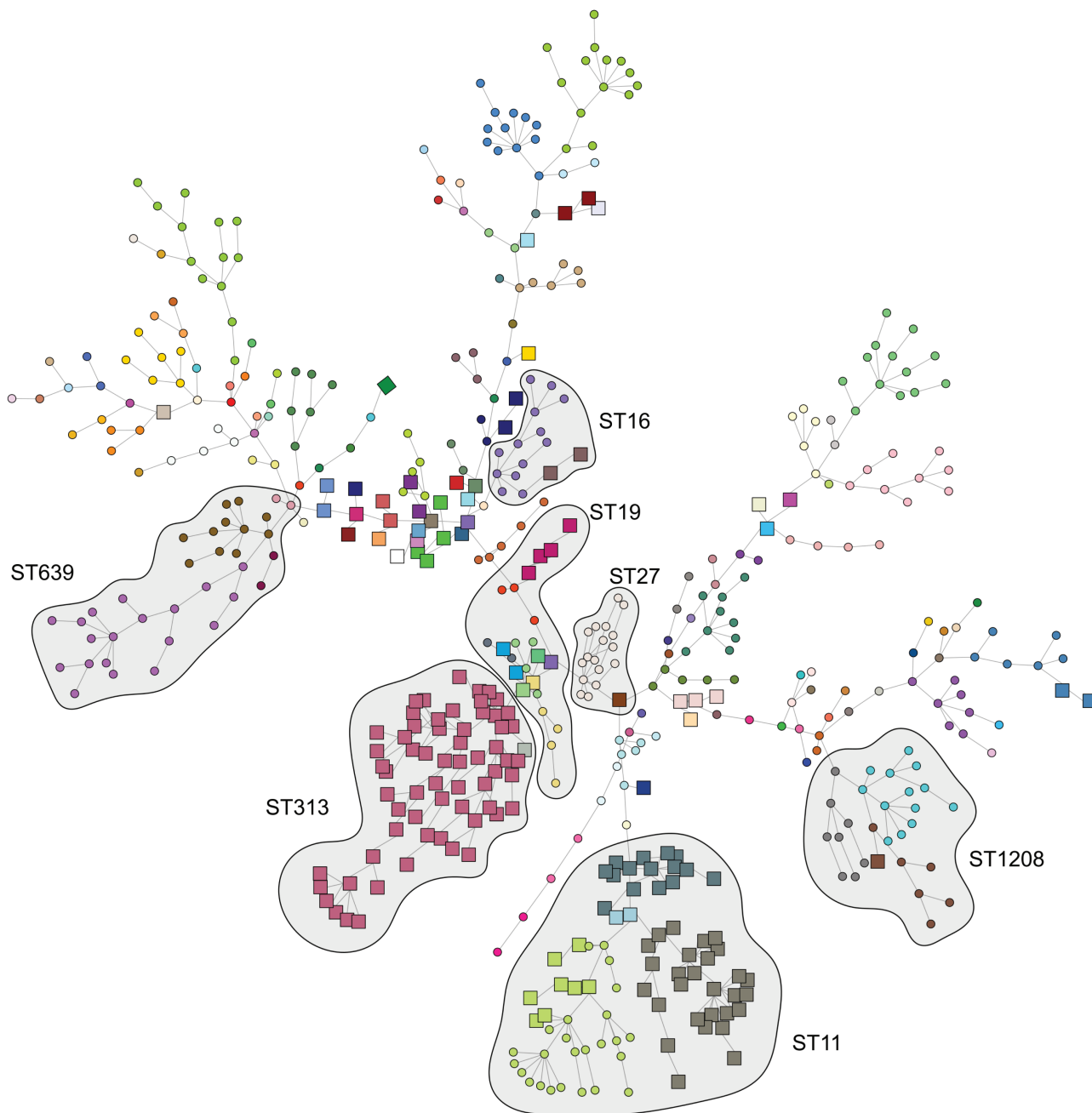


Figure 2. Minimum spanning tree based on *Salmonella* core genome multi-locus sequence type profiles overlaid with common 7-gene multi-locus sequence type clusters, East Africa, 2007–17. Human isolates are presented as squares and isolates from nonhuman sources are presented as circles. Shading represents 7-gene multi-locus sequence type clusters. Node colors differentiate cgMLST groupings, determined using globally optimal electronic based upon related sequence types (goeBURST) [34] in phylogenetic inference and data visualization for sequence based typing methods (PHYLOVIZ) [35]. Abbreviations: cgMLST, core genome multi-locus sequence typing; ST, sequence type; ST11: *Salmonella* Enteritidis; ST313 and ST19: *Salmonella* Typhimurium; ST639: *Salmonella* Orion; ST1208: *Salmonella* II 42:r:-; ST27: *Salmonella* Saintpaul; ST16: *Salmonella* Virchow.

NTS was isolated throughout the meat pathway in northern Tanzania, including on a small proportion of carcasses and >10% of retail cattle and goat meat. While the prevalence of NTS was low in livestock intestinal samples and poultry cloacal samples, it was higher in poultry, livestock slaughter, and butcher environments. These findings point to the importance of cooking meat well prior to consumption, and suggest that the

contamination of meat during slaughter and butchering from a range of sources may contribute substantially to contamination by *Salmonella* of retail meat in this setting.

Our study has a number of limitations. First, our meat pathway research and human disease surveillance were not co-located, and human disease isolates were collected over a period that extended beyond the period of meat pathway data collection.

While movement of livestock, food, and people is common in East Africa, location and time differences may have reduced our ability to attribute human infections to meat pathway sources. Second, our research was limited to cattle and goat meat pathways, and the poultry component was restricted to live chickens and their environments. Although cattle, goats, and poultry are the major sources of meat in Tanzania, we cannot exclude roles for pigs, sheep, and other species in the epidemiology of human NTS infections. Finally, rarefaction curves did not plateau, suggesting that more diversity likely exists that was not sampled by our study.

In conclusion, we demonstrate that nontyphoidal *Salmonella* is common in the meat pathway in Tanzania, especially in slaughter and butcher environments, and as a contaminant of retail meat. MLST cluster analyses suggest that the meat pathway likely contributes to both human bloodstream infections and diarrheal disease due to *Salmonella* Enteritidis ST11 and to other less common *Salmonella* serovars and sequence types, including *Salmonella* Typhimurium other than ST313. However, we did not find evidence of a contribution to *Salmonella* Typhimurium ST313 infections. In addition to studies in humans, more research is needed to systematically examine the contribution of other types of meat, animal products, produce, water, and environmental exposures as potential sources of NTS disease in East Africa.

Supplementary Data

Supplementary materials are available at *Clinical Infectious Diseases* online. Consisting of data provided by the authors to benefit the reader, the posted materials are not copyedited and are the sole responsibility of the authors, so questions or comments should be addressed to the corresponding author.

Notes

Acknowledgments. The authors thank members of the Tanzania field team, including Matayo L. Melubo, Rigobert A. Tarimo, and Fadhili I. Mshana; members of the laboratory team, including Ephrasia A. Hugh, Nelson B. Amani, Victor V. Mosha, Elizabeth A. Kasagama; postgraduate students Emmanuel Sindiyi and Ruth Maganga; the Kenya Medical Research Institute Center for Global Health Research for providing human stool and blood *Salmonella* isolates; Dr Michael C. Shand, PhD, University of Glasgow, Glasgow, United Kingdom, for mapping; Dr Linda Waldman, PhD, and Ms Tabitha Hrynicky, MA, Institute for Development Studies, University of Sussex, Brighton, United Kingdom, and Dr Joanne P. Sharp, PhD, University of Saint Andrews, Scotland, for critical qualitative research that informed the design of the study; Dr Gary C. Barker, PhD, for related work on a model framework for the spread of nontyphoidal *Salmonella* in the meat pathway in northern Tanzania; Dr Margaret A. Davis, DVM, MPH, PhD, Washington State University, Pullman, WA, and Dr Niwael J. Mtui-Malamsha, BVM, MVM, PhD, Ministry of Livestock and Fisheries Development, Dodoma, Tanzania, for related meat safety policy review.

Disclaimer. The findings and conclusions in this report are those of the authors and do not necessarily represent the official position of the US Centers for Disease Control and Prevention. Use of trade names and commercial sources is for identification only and does not imply endorsement by the US Department of Health and Human Services or the US Centers for Disease Control and Prevention.

Financial support. This work was supported by the UK Biotechnology and Biological Sciences Research Council, the UK Department for International Development, the UK Economic and Social Research Council,

the UK Medical Research Council, the UK Natural Environment Research Council, and the UK Defense Science and Technology Laboratory through the Zoonoses and Emerging Livestock Systems programme (grant numbers BB/L017679/1 and BB/N503563/1).

Potential Conflicts of Interest. D. A. W. received support from the New Zealand Food Safety Science and Research Centre. N. P. F. receives financial support as Director of New Zealand Food Safety Science and Research Centre, outside the submitted work. All other authors report no potential conflicts. All authors have submitted the ICMJE Form for Disclosure of Potential Conflicts of Interest. Conflicts that the editors consider relevant to the content of the manuscript have been disclosed.

References

- Kirk MD, Pires SM, Black RE, et al. World Health Organization estimates of the global and regional disease burden of 22 foodborne bacterial, protozoal and viral diseases, 2010: a data synthesis. *PLoS Med* **2015**; *12*:e1001921.
- Marchello CS, Dale AP, Pisharody S, Rubach MP, Crump JA. Prevalence of community-onset bloodstream infections among hospitalized patients in Africa and Asia: a systematic review and meta-analysis. *Antimicrob Agents Chemother* **2019**; *64*:e01974–19.
- Feasey NA, Dougan G, Kingsley RA, Heyderman RS, Gordon MA. Invasive non-typhoidal *Salmonella* disease: an emerging and neglected tropical disease in Africa. *Lancet* **2012**; *379*:2489–99.
- Ao TT, Feasey NA, Gordon MA, Keddy KH, Angulo FJ, Crump JA. Global burden of invasive non-typhoidal *Salmonella* disease, 2010. *Emerg Infect Dis* **2015**; *21*:941–9.
- Global Burden of Disease 2017 Non-Typhoidal *Salmonella* Invasive Disease Collaborators. The global burden of non-typhoidal *Salmonella* invasive disease: a systematic analysis for the Global Burden of Disease Study 2017. *Lancet Infect Dis* **2019**; *19*:1312–24.
- Platts-Mills JA, Babji S, Bodhidatta L, et al; Etiology, Risk Factors, and Interactions of Enteric Infections and Malnutrition and the Consequences for Child Health and Development Project (MAL-ED) Network Investigators. Pathogen-specific burdens of community diarrhoea in developing countries: a multisite birth cohort study (MAL-ED). *Lancet Glob Health* **2015**; *3*:e564–75.
- Kotloff KL, Nataro JP, Blackwelder WC, et al. Burden and aetiology of diarrhoeal disease in infants and young children in developing countries (the Global Enteric Multicenter Study, GEMS): a prospective, case-control study. *Lancet* **2013**; *382*:209–22.
- Brooks JT, Ochieng JB, Kumar L, et al. Surveillance for bacterial diarrhoea and antimicrobial resistance in rural western Kenya, 1997–2003. *Clin Infect Dis* **2006**; *43*:393–401.
- Kingsley RA, Msefula CL, Thomson NR, et al. Epidemic multiple drug resistant *Salmonella* Typhimurium causing invasive disease in sub-Saharan Africa have a distinct genotype. *Genome Res* **2009**; *19*:2279–87.
- Kariuki S, Onsare RS. Epidemiology and genomics of invasive nontyphoidal *Salmonella* infections in Kenya. *Clin Infect Dis* **2015**; *61*(Suppl 4):S317–24.
- Feasey NA, Hadfield J, Keddy KH, et al. Distinct *Salmonella* Enteritidis lineages associated with enterocolitis in high-income settings and invasive disease in low-income settings. *Nat Genet* **2016**; *48*:1211–7.
- Painter JA, Hoekstra RM, Ayers T, et al. Attribution of foodborne illnesses, hospitalizations, and deaths to food commodities by using outbreak data, United States, 1998–2008. *Emerg Infect Dis* **2013**; *19*:407–15.
- Parsons BN, Humphrey S, Salisbury AM, et al. Invasive non-typhoidal *Salmonella* typhimurium ST313 are not host-restricted and have an invasive phenotype in experimentally infected chickens. *PLoS Negl Trop Dis* **2013**; *7*:e2487.
- Egualé T, Asrat D, Alemayehu H, et al. Phenotypic and genotypic characterization of temporally related nontyphoidal *Salmonella* strains isolated from humans and food animals in central Ethiopia. *Zoonoses Public Health* **2018**; *65*:766–76.
- Fashae K, Leekitcharoenphon P, Hendriksen RS. Phenotypic and genotypic comparison of salmonellae from diarrhoeic and healthy humans and cattle, Nigeria. *Zoonoses Public Health* **2018**; *65*:e185–95.
- Thomas KM, de Glanville WA, Barker GC, et al. Prevalence of *Campylobacter* and *Salmonella* in African food animals and meat: a systematic review and meta-analysis. *Int J Food Microbiol* **2020**; *315*:108382.
- Mullner P, Jones G, Noble A, Spencer SE, Hathaway S, French NP. Source attribution of food-borne zoonoses in New Zealand: a modified Hald model. *Risk Anal* **2009**; *29*:970–84.
- Mather AE, Vaughan TG, French NP. Molecular approaches to understanding transmission and source attribution in nontyphoidal *Salmonella* and their application in Africa. *Clin Infect Dis* **2015**; *61*(Suppl 4):S259–65.

19. Sindiyi E, Maganga R, Thomas KM, et al. Food safety, health management, and biosecurity characteristics of poultry farms in Arusha City, northern Tanzania, along a gradient of intensification. *East Afr Health Res J* **2018**; 2:168–80.
20. Ministry of Primary Industries. Specifications for National Microbiological Database Programme. Available at: <https://www.mpi.govt.nz/dmsdocument/14110/loggedIn>. Accessed 18 February 2019.
21. Feikin DR, Olack B, Bigogo GM, et al. The burden of common infectious disease syndromes at the clinic and household level from population-based surveillance in rural and urban Kenya. *PLoS One* **2011**; 6:e16085.
22. Verani JR, Toroitich S, Auko J, et al. Burden of invasive nontyphoidal *Salmonella* disease in a rural and urban site in Kenya, 2009–2014. *Clin Infect Dis* **2015**; 61(Suppl 4):S302–9.
23. Clinical Laboratories Standards Institute. Performance standards for antimicrobial susceptibility testing: 26th informational supplement. CLSI document M100-S26. Wayne, Pennsylvania: Clinical Laboratories Standards Institute, **2016**.
24. Makino S, Kurazono H, Chongsangum M, et al. Establishment of the PCR system specific to *Salmonella* spp. and its application for the inspection of food and fecal samples. *J Vet Med Sci* **1999**; 61:1245–7.
25. Bolger AM, Lohse M, Usadel B. Trimmomatic: a flexible trimmer for Illumina sequence data. *Bioinformatics* **2014**; 30:2114–20.
26. Bankevich A, Nurk S, Antipov D, et al. SPAdes: a new genome assembly algorithm and its applications to single-cell sequencing. *J Comput Biol* **2012**; 19:455–77.
27. Zankari E, Hasman H, Cosentino S, et al. Identification of acquired antimicrobial resistance genes. *J Antimicrob Chemother* **2012**; 67:2640–4.
28. Liu B, Zheng D, Jin Q, Chen L, Yang J. VFDB 2019: a comparative pathogenomic platform with an interactive web interface. *Nucleic Acids Res* **2019**; 47:D687–92.
29. Jia B, Raphenya AR, Alcock B, et al. CARD 2017: expansion and model-centric curation of the comprehensive antibiotic resistance database. *Nucleic Acids Res* **2017**; 45:D566–73.
30. Shen W, Le S, Li Y, Hu F. SeqKit: a cross-platform and ultrafast toolkit for FASTA/Q File Manipulation. *PLoS One* **2016**; 11:e0163962.
31. Seemann T, Goncalves da Silva A, Bulach DM, Schultz MB, Kwong JC, Howden BP. Github: Nullarbor, **2018**. Available at: <https://github.com/tseemann/nullarbor>. Accessed 18 February 2019.
32. Jolley KA, Maiden MC. BIGSdb: Scalable analysis of bacterial genome variation at the population level. *BMC Bioinformatics* **2010**; 11:595.
33. Yoshida CE, Kruczkiewicz P, Laing CR, et al. The *Salmonella in silico* Typing Resource (SISTR): an open web-accessible tool for rapidly typing and subtyping draft *Salmonella* genome assemblies. *PLoS One* **2016**; 11:e0147101.
34. Francisco AP, Bugalho M, Ramirez M, Carriço JA. Global optimal eBURST analysis of multilocus typing data using a graphic matroid approach. *BMC Bioinformatics* **2009**; 10:152.
35. Francisco AP, Vaz C, Monteiro PT, Melo-Cristino J, Ramirez M, Carriço JA. PHYLOViZ: phylogenetic inference and data visualization for sequence based typing methods. *BMC Bioinformatics* **2012**; 13:87.
36. Barker DOR, Carriço JA, Kruczkiewicz P, Palma F, Rossi M, Taboada EN. Rapid identification of stable clusters in bacterial populations using the adjusted Wallace coefficient. *bioRxiv* **2018** [Preprint]. doi:10.1101/299347. Available at: <https://www.biorxiv.org/content/10.1101/299347v1.full>. Accessed 18 February 2019.
37. Csardi G, Nepusz T. The igraph software package for complex network research. *Complex Systems* 1695 ed: Interjournal **2006**. Available at: <https://igraph.org>. Accessed 18 February 2019.
38. Ferrés I, Iraola G. MLSTar: automatic multilocus sequence typing of bacterial genomes in R. *Peer J* **2018**; 6:e5098.
39. Neuwirth E. Package “RColorBrewer.” Available at: <https://cran.r-project.org>. Accessed 18 February 2019.
40. Warnes GR, Bolker B, Bonebakker L, et al. Package “gplots.” Available at: <https://cran.r-project.org>. Accessed 18 February 2019.
41. Paradis E, Schliep K. Ape 5.0: an environment for modern phylogenetics and evolutionary analyses in R. *Bioinformatics* **2019**; 35:526–8.
42. Letunic I, Bork P. Interactive Tree Of Life (iTOL) v4: recent updates and new developments. *Nucleic Acids Res* **2019**; 47:W256–9.
43. Ward JH. Hierarchical grouping to optimize an objective function. *J Am Stat Assoc* **1963**; 58:236–44.
44. Charney N, Record S. Vegetarian: Jost diversity measures for community data. R package version 1.2. CRAN R-project, **2012**. Available at: <https://CRAN.R-project.org/package=vegetarian>. Accessed 18 February 2019.
45. Oksanen J, Blanchet FG, Friendly M, et al. Vegan: community ecology package. R package version 2.5–3. CRAN R-project, **2018**. Available at: <https://CRAN.R-project.org/package=vegan>. Accessed 18 February 2019.
46. Akullian A, Montgomery JM, John-Stewart G, et al. Multi-drug resistant nontyphoidal *Salmonella* associated with invasive disease in western Kenya. *PLoS Negl Trop Dis* **2018**; 12:e0006156.
47. Brodsky IE, Ghori N, Falkow S, Monack D. Mig-14 is an inner membrane-associated protein that promotes *Salmonella typhimurium* resistance to CRAMP, survival within activated macrophages and persistent infection. *Mol Microbiol* **2005**; 55:954–72.
48. Marcus R, Varma JK, Medus C, et al. Re-assessment of risk factors for sporadic *Salmonella* serotype Enteritidis infections: a case-control study in five FoodNet Sites, 2002–2003. *Epidemiol Infect* **2007**; 135:84–92.
49. Laufer AS, Grass J, Holt K, Whichard JM, Griffin PM, Gould LH. Outbreaks of *Salmonella* infections attributed to beef, United States, 1973–2011. *Epidemiol Infect* **2015**; 143:2003–13.
50. Kariuki S, Revathi G, Gakuya F, Yamo V, Muyodi J, Hart CA. Lack of clonal relationship between non-typhi *Salmonella* strain types from humans and those isolated from animals living in close contact. *FEMS Immunol Med Microbiol* **2002**; 33:165–71.
51. Kariuki S, Revathi G, Kariuki N, et al. Invasive multidrug-resistant non-typhoidal *Salmonella* infections in Africa: zoonotic or anthroponotic transmission? *J Med Microbiol* **2006**; 55:585–91.