

**CHARACTERIZATION OF TANZANIA SHORTHORN ZEBU CATTLE FOR  
TOLERANCE TO TICKS AND EAST COAST FEVER**

**EMMANUEL LEVILLAL KATAMBOI LAISSER**

**A THESIS SUBMITTED IN FULFILLMENT OF THE REQUIREMENTS FOR  
THE DEGREE OF DOCTOR OF PHILOSOPHY OF SOKOINE UNIVERSITY OF  
AGRICULTURE. MOROGORO, TANZANIA.**

## EXTENDED ABSTRACT

In Tanzania, livestock diseases, especially tick borne diseases (TBDs), impose losses to livestock in terms of mortality, decrease in production and increased costs of control measures. Among the TBDs, East Coast fever (ECF) is the most prevalent and fatal disease. The main control measure for TBDs is use of acaricides to control the vector ticks, chemotherapy of sick animals as well as immunization of cattle by the infection and treatment method (ITM). The applications of these control measures are often limited by high costs of acaricides and veterinary drugs, development of resistance by vector ticks and the parasites as well as negative environmental impacts. This necessitated the search for alternative ways to control TBDs with minimum use of acaricides. Indigenous breeds of cattle are said to be tolerant to TBDs and adapted to harsh conditions prevailing in rural areas. Among the Tanzania Shorthorn Zebu (TSHZ) cattle, Tarime cattle are believed by livestock keepers to be tolerant to ticks and ECF. However, there are no scientific investigations which have been conducted to verify the farmers' beliefs. Therefore, studies were conducted to validate the farmers' belief that Tarime cattle are tolerant to ECF.

In the first study, a cross-sectional survey was conducted in four selected districts of Mara (Serengeti and Tarime) and Simiyu (Maswa and Meatu) regions to determine the perception of livestock farmers on ticks, tick-borne diseases and tolerance of their cattle to TBDs. In the second study, tick burden and prevalence of *Theileria parva* (*T. parva*) infection in Tarime cattle found in Serengeti and Tarime districts were assessed. In the third study, an on-station experiment was conducted to compare tick burden and induced immunity due to *T. parva* infection in Tarime and Sukuma zebu cattle under different tick control regimes. The fourth study was a review on tolerance of TSHZ cattle to ticks and ECF. In the first study, a well structured questionnaire and personal observation were

used to collect information. The aim of the study was to assess farmers' knowledge and perceptions on tick species, tick-borne diseases, tick control measures, production constraints and tolerance of Tarime and Sukuma zebu cattle to TBDs. The study involved 60 agro-pastoralists from each of the districts of Serengeti, Tarime, Maswa and Meatu in Tanzania, making a total sample size of 240 livestock farmers. Data were collected through individual interview using a structured questionnaire. The results show that, livestock diseases were ranked as the first important problem affecting cattle production in Serengeti and Tarime districts while in Maswa and Meatu districts lack of livestock feeds during the dry season was ranked as the most important constraint, followed by livestock diseases. Among the diseases affecting cattle, the TBDs ranked first in Serengeti and Tarime districts while in Maswa and Meatu districts the TBDs ranked fourth and sixth, respectively. Most (74%) of the livestock farmers interviewed knew well the signs of the different TBDs. The majority of the respondents in all districts knew that ECF is caused by ticks, but did not associate the other TBDs with ticks. Most of the farmers interviewed were using acaricide to control ticks, and the most common method of application was hand spraying. All farmers used Oxytetracycline to treat TBDs, however, some farmers used local herbs. Although most farmers knew the signs of TBDs, they were not spraying/dipping their animals on regular basis due to economic reasons and the belief that their animals always carry ticks without being sick or dying and ECF affects only calves. About half of the farmers considered their breeds to be tolerant to ticks and ECF. It is concluded that, the livestock farmers in the Lake zone have substantial knowledge on tick species and TBDs symptoms and they consider ECF as less important disease compared to the other TBDs.

The second study was carried out to assess the distribution, abundance of different tick species and the prevalence of *T. parva* infection in Tarime zebu cattle kept in selected

wards of Serengeti and Tarime districts in Mara region. Adult ticks were sampled, identified and counted from 360 animals which were extensively managed in communal rangelands. Concurrently, blood samples were collected and thereafter DNA extracted and nested polymerase chain reaction (nPCR) carried out to determine the prevalence of *T. parva*. Two primers specific for p104 gene were used in PCR amplification to detect the presence of *T. parva* DNA. Four genera of ticks, namely, *Rhipicephalus*, *Amblyomma*, *Boophilus* and *Hyalomma* were identified. *Rhipicephalus spp* accounted for 71.8% of the total ticks whereas *Amblyomma*, *Boophilus* and *Hyalomma* constituted 14.1%, 14.0% and 0.1% of the ticks, respectively. There was significantly ( $p < 0.05$ ) more animals infested with ticks in Tarime district (96.1%) than in Serengeti (61.7%). The average counts of ticks were higher in adult animals ( $p < 0.05$ ) than in young animals. The overall prevalence of *T. parva* was 27.7% and was significantly ( $p < 0.05$ ) higher in Serengeti (38.3%) than in Tarime district (16.7%). Interestingly, it was observed that, all animals which tested positive for *T. parva* did not show any clinical signs of ECF, suggesting existence of subclinical infection in Tarime zebu. These results suggest that Tarime cattle can tolerate ECF infection and are likely to save as potential carriers of *T. parva* to other less tolerant cattle breeds in mixed herds. Since Tarime cattle are preferred by most farmers with mixed herds, routine screening for *T. parva* is highly recommended to minimize introduction of infected cattle into an immunologically naive population.

The third study was conducted to determine tick burden and immunological parameters of resistance to ECF in Tarime and Sukuma zebu strains exposed to natural tick infestation. Tick load, Packed Cell Volume (PCV), *T. parva* specific antibody percent positivity (PP) and prevalence of *T. parva* parasites were studied in relation to dipping regime, breed, and season of the year. A total of 25 animals per strain were used in this experiment. Animals of each strain were divided into three groups. Animals in group I were dipped

every two weeks while those in group II were dipped every three weeks. Animals in group III were not dipped at all. Comparison of effect of dipping frequency on tick burden showed no significant ( $p > 0.05$ ) differences when cattle which were dipped in each strain either once every 2 or 3 weeks in the two seasons. However, Tarime cattle had significantly higher ( $p < 0.05$ ) tick count than Sukuma cattle and non dipped groups maintained high tick infestation throughout the experimental period. The PCV values in all cattle were within the normal physiological range; although this parameter was significantly lower ( $p < 0.05$ ) in Tarime cattle. All cattle regardless of breed were seropositive (had antibody levels above ELISA cut-off point), but Tarime cattle maintained higher antibody percent positivity compared to Sukuma cattle by 15%. Conversely, the prevalence of *T. parva* parasites was lower in Tarime (36%) compared to Sukuma cattle (38%), although the difference was not significant. During the study period 20% (5/25) of Sukuma cattle contracted ECF, but none of the Tarime cattle showed any clinical signs for the disease. The differences between the two zebu strains shown in terms of antibody percent positivity and *T. parva* parasite prevalence indicate different ability of the two cattle strains to resist tick infestation and ECF infection under natural challenge. Thus, the higher antibody levels but lower parasite prevalence under high tick challenge observed in Tarime cattle, suggests a high proportion of individual animals in this strain, which are carriers of *T. parva*. Thus, these findings confirm the farmers' perceptions on suitability of Tarime cattle under prevailing ecological conditions in the Lake zone of Tanzania.

The fourth study was a review on the prevalence and tolerance of Tanzania Shorthorn Zebu cattle to East Coast fever in Tanzania. A search of peer-reviewed publications on ECF, ticks and ECF tolerant cattle in Tanzania was conducted from comprehensive databases including PubMed, Science Direct, Swetswise and CAB direct. The search was extended to available theses, conference proceedings and project reports. The findings

show that ECF is not seen by most livestock keepers as the most serious disease compared to other TBDs. This is because the zebu cattle which are predominantly kept all over the country are thought to be tolerant to ticks and ECF. Some of the zebu strains which are thought to tolerate ECF are Sukuma, Tarime, Maasai and Fipa cattle. In all agro ecological zones the most prevalent tick species is *R. appendiculatus*, this implies that the TSHZ cattle are at risk of being infected with ECF if the animals are not resistant and proper tick control regimes are not observed. In Tanzania, ECF control has mainly relied predominantly on tick control using acaricides and chemotherapy while ECF immunization has been recently introduced. Some research results also showed that, immunization can boost immune status of indigenous cattle and, if ECF immunization can be sustained, large areas are expected to be endemically stable. However, the adoption of immunization on wider scale is questionable due to its cost and change in farmers' attitudes, socio-demographic and environmental concerns. The study recommends interdisciplinary collaboration between veterinary epidemiologists, socio and agricultural economists and ecologists not only to find a single most suitable method of ticks and ECF control but to integrate the available methods with tolerant strains of cattle available to create endemic stability condition for the disease which can reduce the complexity of the whole process.

Generally, the findings of this study confirm farmers' perception on the ability of Tarime cattle to tolerate ECF infection under prevailing ecological conditions in the Lake zone of Tanzania. The use of this strain, therefore, can be an alternative way of minimizing acaricide usage, whereby application can be done on monthly basis. However, when Tarime and other breeds are kept together, screening of the animals for presence of *T. parva* parasites is recommended. From these findings it is concluded that using Tarime cattle could be effective and economical in rural areas as it minimizes the use of synthetic

acaricide to control ticks and TBDs. Further research studies to determine the gene responsible for tolerance of Tarime cattle to ECF are recommended.

**DECLARATION**

I, **EMMANUEL LEVILLAL KATAMBOI LAISSER**, do hereby declare to the Senate of Sokoine University of Agriculture that this thesis is my own original work done within the period of registration and that it has neither been submitted nor being concurrently submitted for degree award in any other institution.

---

<b>EMMANUEL LEVILLAL KATAMBOI LAISSER</b> <b>(PhD Candidate)</b>	<b>Date</b>
---	-------------

The above declaration is confirmed;

---

<b>Prof. CHENYAMBUGA, S. W.</b> <b>(Supervisor)</b>	<b>Date</b>
--	-------------

---

<b>Prof. KARIMURIBO, E. D.</b> <b>(Supervisor)</b>	<b>Date</b>
---	-------------



**COPYRIGHT**

No part of this dissertation may be reproduced, stored in any retrieval system or transmitted in any form or by any means without prior written permission of the author or Sokoine University of Agriculture in that behalf.

## ACKNOWLEDGEMENTS

First and foremost, I give immeasurable thanks to God Almighty, without Him this work would not have become a reality. I express my profound gratitude to the Norwegian Agency for International Development (NORAD) through the programme for Enhancing Pro-poor Innovation in Natural Resources and Agricultural Value Chains (EPINAV) at Sokoine University of Agriculture for financing the research work through a project titled “Characterization of Tanzania Shorthorn Zebu Cattle for Tolerance to Ticks and East Coast fever”. Appreciation is also extended to the members of the research team for their moral and technical support throughout the whole period of my PhD program. I am also very grateful to my employer, the Permanent Secretary of the Ministry of Education, Science and Technology for granting me a study leave. I wish also to express my special thanks to my co-workers and Head of Inspectorate office, Eastern Zone for their tireless moral support for the entire study period.

I wish to express my sincere and heartfelt thanks to my supervisors, Professors S.W. Chenyambuga and E.D. Karimuribo, first for kindly accepting me to be their student, and secondly for their parental guidance, closer supervision and their ever available assistance from the point I began my proposal preparation as well as throughout the tedious part of research work and thesis preparation. I further owe many thanks to my supervisors not only for guiding and correcting manuscripts for publications, but also for tirelessly making constructive suggestions and corrections to improve them. I would like to thank Professor L.J.M. Kusiluka, for his encouragement during the initial stage of my study and Prof. P.S. Gwakisa who assisted in laboratory analysis of sample for immunological parameters. Also, I would like to thank Dr. E.J.M. Shirima of the Ministry of Agriculture, Livestock and Fisheries, Tanzania who supported me in many aspects when I started my studies. I thank

the District Veterinary Officers, Livestock Officers and Village Extension Officers in Maswa, Meatu, Serengeti and Tarime districts for their assistance during field work as well as the livestock keepers in these districts who provided their animals for the experiments. Thanks are also extended to all workers at the Tanzania Livestock Research Institute (TALIRI), Mabuki for assisting in taking care of the experimental animals for the entire period of data collection. I really appreciate their support and assistance. Also I gratefully acknowledge the assistance provided by different laboratory technicians at Zonal Veterinary Investigation Centre and Tanzania Veterinary Laboratory Agency (TVLA), Mwanza and at the Department of Microbiology, Parasitology and Immunology, SUA during analyses of different samples.

My warm thanks go to my fellow PhD students; to them I will never forget their enthusiastic support, love, sense of humor and generosity for the entire study period. They played a substantial role in giving constructive comments and moral support.

A special note of thanks is due to my wife (Martha) and my beloved children (Loitarasakaki and William) for accommodating my long absence from home. Their consistent moral support, encouragement and stability were the keys towards my success.

## **DEDICATION**

This thesis is dedicated to my beloved wife; Martha Tesha, my children Loitarasakaki and William Melita for their tolerance of my long absence from the family for the entire study period, my lovely sister Lidya who handled extended family responsibilities during my absence and to my deceased parents Mr. Katamboi Ngoilenya Laisser and Mrs. Naisiligaki Lotubukokoki Lekashu who laid my educational foundation.

## TABLE OF CONTENTS

<b>EXTENDED ABSTRACT .....</b>	<b>ii</b>
<b>DECLARATION .....</b>	<b>viii</b>
<b>COPYRIGHT .....</b>	<b>ix</b>
<b>ACKNOWLEDGEMENTS .....</b>	<b>x</b>
<b>DEDICATION .....</b>	<b>xii</b>
<b>TABLE OF CONTENTS .....</b>	<b>xiii</b>
<b>LIST OF PAPERS.....</b>	<b>xv</b>
<b>LIST OF TABLES .....</b>	<b>xvii</b>
<b>LIST OF FIGURES .....</b>	<b>xix</b>
<b>LIST OF PLATES.....</b>	<b>xx</b>
<b>LIST OF ABBREVIATIONS AND SYMBOLS .....</b>	<b>xxi</b>
<b>CHAPTER ONE.....</b>	<b>1</b>
<b>1.0 INTRODUCTION .....</b>	<b>1</b>
1.1 Background Information.....	1
1.2 Problem Statement and Justification.....	2
1.3 Objectives.....	2
1.3.1 Overall objective.....	2
1.3.2 Specific objectives.....	3
1.4 Research Hypothesis of the Study .....	3
1.5 General Methodology .....	3
1.6 Organisation of the Thesis.....	11
<b>REFERENCES .....</b>	<b>11</b>

<b>CHAPTER TWO.....</b>	<b>14</b>
<b>2.0 PAPER I .....</b>	<b>14</b>
Knowledge and perception on ticks, tick-borne diseases and indigenous cattle tolerance to East Coast fever in agro-pastoral communities of Lake Zone in Tanzania ...	14
<b>CHAPTER THREE .....</b>	<b>27</b>
<b>3.0 PAPER II.....</b>	<b>27</b>
Tick burden and prevalence of <i>Theileria parva</i> infection in Tarime zebu cattle in the lake zone of Tanzania .....	27
<b>CHAPTER FOUR.....</b>	<b>36</b>
<b>4.0 PAPER III .....</b>	<b>36</b>
Tick burden and acquisition of immunity to <i>Theileria parva</i> by Tarime cattle in comparison to Sukuma cattle under different tick control regimes in the lake zone of Tanzania .....	36
<b>CHAPTER FIVE.....</b>	<b>45</b>
<b>5.0 PAPER IV .....</b>	<b>45</b>
A Review on prevalence, control measure and tolerance of Tanzania Shorthorn Zebu cattle to East Coast fever in Tanzania .....	45
<b>CHAPTER SIX.....</b>	<b>58</b>
6.0 Research Output of the Thesis, General Conclusions and Recommendations .....	58
6.1 Research Output of the Thesis .....	58
6.2 General Conclusion.....	60
6.3 Recommendations.....	60

## LIST OF PAPERS

This thesis is based on four specific studies summarized into published papers, which will be referred to in the text by their roman numerals:

**Paper I: Laisser, E. L. K., Chenyambuga, S. W., Msalya, G., Kipanyula, M. J., Mdegela, R. H., Karimuribo, E. D., Mwilawa, A. J. and Kusiluka, L. J. M. 2015.**

Knowledge and perception on ticks, tick-borne diseases and indigenous cattle tolerance to East Coast fever in agro-pastoral communities of Lake Zone in Tanzania.

**Status:** Published in *Livestock Research for Rural Development* 27(4). Retrieved April 2, 2015 from <http://www.lrrd.org/lrrd27/4/lais27064.html>.

**Paper II: Laisser, E. L. K., Kipanyula, M. J., Msalya, G., Mwega, E. D., Mdegela, R. H., Karimuribo, E. D., Kusiluka, L., Mwilawa, A. J. and Chenyambuga, S. W. 2014.**

Tick burden and prevalence of *Theileria parva* infection in Tarime zebu cattle in the lake zone of Tanzania.

**Status:** Published in the *Journal of Tropical Animal Health and Production* 46 (8): 139-1406. August, 2014.

**Paper III: Laisser, E. L. K., Chenyambuga, S. W., Karimuribo, E. D., Msalya, G., Kipanyula, M. J., Mwilawa, A. J., Mdegela, R. H., Kusiluka, L. J. M. and Gwakisa, P. S.** Tick burden and acquisition of immunity to *Theileria parva* by Tarime cattle in comparison to Sukuma cattle under different tick control regimes in the Lake zone of Tanzania.

**Status:** Published in the *Journal of Veterinary Medicine and Animal Health* 8(3): 21-28. March, 2016.

**Paper IV: Laisser, E. L. K., Chenyambuga, S. W., Karimuribo, E. D., Msalya, G., Kipanyula, M. J., Mwilawa, A. J., Mdegela, R. H. and Kusiluka, L. J. M.** A review on prevalence, control measure and tolerance of Tanzania Shorthorn Zebu cattle to East Coast fever in Tanzania. *Tropical Animal Health and Production*.

**Status:** Published in the Journal of *Tropical Animal Health and Production* 49: 813-822. March, 2017.



## LIST OF TABLES

### LIST OF TABLES: PAPER I

Table 1:	Household social characteristics .....	18
Table 2:	Ranking of constraints to cattle production in the study areas.....	18
Table 3:	Most important diseases as perceived by farmers in the four districts.....	19
Table 4:	Number of animal effected by Tick Borne Diseases and resulting mortality .....	19
Table 5:	Common tick species, tick control methods and opinions of livestock keepers on tolerance of their breeds to tick – borne diseases .....	20
Table 6:	Frequency of spraying /dipping for tick control in the four districts .....	21

### LIST OF TABLES: PAPER II

Table 1:	Tick burden in Tarime cattle examined from Serengeti and Tarime Districts.....	32
Table 2:	Factors influencing tick burden in Serengeti and Tarime Districts .....	33
Table 3:	Factors influencing / associated with <i>T. parva</i> infection (percentage on animals infected in each category, ward and district).....	34

### LIST OF TABLES: PAPER III

Table 1:	Factors influencing tick burden in Sukuma and Tarime cattle .....	40
Table 2:	Tick general and confirmed ECF cases in Sukuma and Tarime cattle breeds .....	40
Table 3:	Percentage of <i>T. parva</i> PCR positive sample in Sukuma and Tarime breeds at different sampling periods .....	40

Table 4: Influence of breed, dipping regime and season on prevalence of *T. parva* parasites, antibody percentage positivity and packed cell volume in Sukuma and Tarime cattle.....41

**LIST OF TABLES: PAPER IV**

Table 1: Findings from research done in Tanzania on indigenous cattle, tick and prevalence of *Theileria parva*.....50

Table 2: Tick tolerant zebu in Africa .....52

**LIST OF FIGURES**

**FIGURE CHAPTER ONE**

Figure 1: A map of Tanzania showing study area.....4

**FIGURE PAPER III**

Figure 1: Comparison of cattle by Antibody percentage positivity categories .....42

**FIGURE PAPER IV**

Figure 1: A map of Tanzania showing distribution of ticks.....53

**LIST OF PLATES****LIST OF PLATES CHAPTER ONE**

Plate 1:	Mature Tarime Zebu Cattle strain .....	5
Plate 2:	Mature Sukuma Zebu Cattle strain .....	6
Plate 3:	Amplicons obtained from amplification of the <i>T. parva</i> p104 gene.....	8
Plate 4:	Mature Maasai Zebu Cattle strain .....	10
Plate 5:	Mature Iringa Red Zebu Cattle strain .....	10
Plate 6:	Mature Singida white Zebu Cattle strain .....	10
Plate 7:	Mature Ufipa Zebu Cattle strain .....	10

**LIST OF ABBREVIATIONS AND SYMBOLS**

$^{\circ}\text{C}$	Degree Celsius
ANOVA	Analysis of Variance
BQ	Blackquarter
CBPP	Contagious Bovine Pleuropneumonia
DAARS	Department of Animal, Aquaculture and Range Science
DNA	Deoxyribonucleic Acid
ECF	East Coast fever
EDTA	Ethylenediaminetetraacetic Acid
ELISA	Enzyme-linked Immunosorbent Assay
FAO	Food and Agriculture Organization of the United Nations
FMD	Foot and Mouth Diseases
GLM	General Linear Model
ITM	Infection and treatment method
LSD	Lumpy skin diseases
MLFD	Ministry of Livestock and Fisheries Development
MOEV	Ministry of Education and Vocational Training
N or n	Number of observation
nPCR	Nested Polymerized Chain Reaction
NS	Not significant
OTC	Oxytetracycline
P - value	Probability value
PCR	Polymerized Chain Reaction
PCV	Packed cell volume

RBC	Red blood cells
s.e	Standard error
SAS	Statistical Analysis Systems
SPSS	Statistical Package for Social Sciences
SUA	Sokoine University of Agriculture
TBDs	Tick Borne-Diseases
TVLA	Tanzania Veterinary Laboratory Agency
URT	United Republic of Tanzania
UV	Ultra Violet
vs	Against

## CHAPTER ONE

### 1.0 INTRODUCTION

#### 1.1 Background Information

Animal diseases are one of the main challenges which undermine productivity of indigenous cattle. The most critical diseases are Tick-borne diseases (TBDs), particularly East Coast fever (ECF). In Tanzania, TBDs pose a more serious, fatal and economic threat to cattle production compared to other diseases (Chenyambuga *et al.*, 2008). These TBDs include anaplasmosis, babesiosis, ECF and heartwater. Among these diseases, ECF or theileriosis is reported to be the most prevalent and fatal disease among TBDs in East Africa, particularly in Tanzania (Okuthe and Buyu, 2006; Swai *et al.*, 2007).

In Tanzania about 80% of the national cattle herds are at risk of being infected with TBDs annually and the direct economic losses are estimated at US\$ 248 million and mortality rate of 920 000 animals per year (Kivaria, 2006). The Government of Tanzania has decided to subsidize the price of acaricides to enable many farmers to dip their animals so as to reduce mortality rates due to TBDs. However, many livestock keepers are unable to purchase acaricides and, therefore, continue to lose animals from TBDs (Mugisha *et al.*, 2005). Due to this fact, there is a need to look for other means of controlling the disease rather than relying on application of acaricides which seems to be unsustainable.

Keeping genetically resistant breeds is one of the sustainable and cheap means of controlling diseases (de Castro, 1991). In other countries breeds of cattle which are resistant to ticks infestation and TBDs have been developed (Latif *et al.*, 1991). Thus, it is possible to have a breed of cattle in Tanzania which is tolerant to TBDs like those found in other African countries. Some farmers around Lake Victoria do not spray or dip their

cattle against ticks, the vectors of *Theileria parva*, the parasite which causes ECF, due to their perception that their cattle are resistant (Chenyambuga *et al.*, 2008). Tarime cattle strain which is found in the Lake Zone is believed to be tolerant to TBDs by their owners. This belief has led to the spread of Tarime cattle to many parts of the country, particularly in Rukwa and Mbeya regions as a coping strategy to TBDs. Therefore, there is a need to conduct a scientific investigation to ascertain the farmers' belief and determine the mechanism responsible for tolerance of Tarime zebu strain to TBDs.

## **1.2 Problem Statement and Justification**

Tolerance of Tarime zebu strain to ECF has not been scientifically proved, but it is based merely on farmers' perceptions. In addition, there is no documented information which indicates that Tarime cattle do not succumb to clinical disease when infected with *T. parva*. Thus, tolerance of Tarime zebu strain to TBDs is based only on perceptions and attitudes of livestock farmers. Thus, there is need for conducting scientific investigations to verify the tolerance of Tarime zebu strain to ticks and ECF. This study therefore, intended to assess the ability of Tarime cattle to tolerate tick infestation and ECF infection. It was expected that the findings from this study will assist policy makers, farmers and breeders to make rational decision for genetic improvement and conservation of Tarime zebu strain.

## **1.3 Objectives**

### **1.3.1 Overall objective**

To establish whether Tarime cattle are tolerant to tick infestation and ECF infection.



### **1.3.2 Specific objectives**

The specific objectives were:

- i. To determine the perceptions of livestock farmers on tolerance of Tarime cattle to ticks and ECF.
- ii. To determine tick burdens and prevalence of ECF in Tarime cattle kept in Tarime and Serengeti districts.
- iii. To compare the tolerance/susceptibility of Tarime and Sukuma zebu cattle to ECF and tick infestation.
- iv. To review tolerance and susceptibility of TSHZ cattle to ticks and *Theileria parva* infection.

### **1.4 Research Hypothesis of the Study**

- i. Livestock farmers in the Lake zone of Tanzania perceive that their cattle are tolerant to ticks and ECF and thus, there is no need for dipping to control ticks.
- ii. There is no difference in tick burden and prevalence of ECF in Tarime cattle kept in Tarime and Serengeti districts.
- iii. There is no difference in tolerance/susceptibility between Tarime and Sukuma zebu cattle to ECF and tick infestation.

### **1.5 General Methodology**

#### **Study Area**

This study was conducted in four districts located in two regions of Tanzania and on station at Misungwi district in Mwanza region as shown in the map in Figure 1. The districts include Serengeti and Tarime in Mara region, Maswa and Meatu in Simiyu region. The regions are home to two common strains of Tanzania Shorthorn Zebu (Plates 1 and 2) populations used in this study, namely Sukuma and Tarime cattle. Both, Mara

and Simiyu regions are located in the Lake zone of Tanzania. These regions are geographically separated and have different agro-climatic conditions. Mara region lies between latitudes  $1^{\circ} 0'$  and  $2^{\circ} 31'$  south of Equator and between longitudes  $33^{\circ} 10'$  and  $35^{\circ} 15'$  east of Greenwich while Simiyu region lies between latitude  $2^{\circ} 1'$  and  $4^{\circ}$  south of Equator and between longitudes  $33^{\circ} 3'$  and  $35^{\circ} 1'$  east of Greenwich. Tarime Zebu cattle (Plate 1) are kept in Serengeti and Tarime districts while Sukuma cattle (Plate 2) are kept in Maswa and Meatu districts. Both Tarime and Sukuma cattle belong to the Tanzania Shorthorn Zebu strains. The dominant farming system in all districts is agro-pastoral production system in which livestock farmers practice herded grazing in communal and fallow lands.

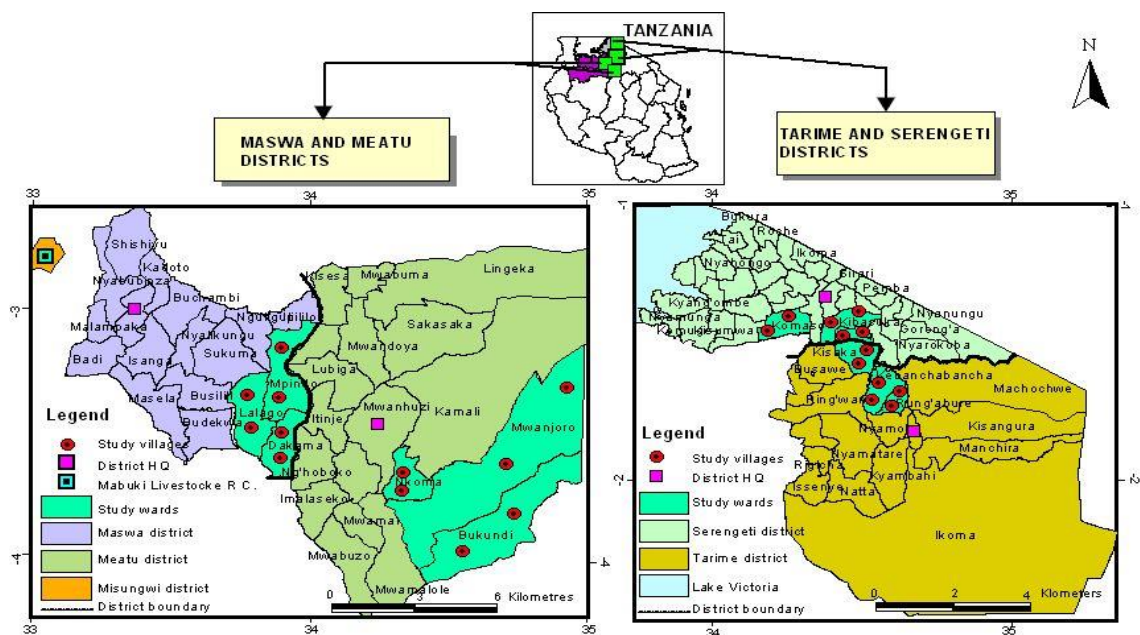


Figure 1: Map of Tanzania showing the study areas

To achieve specific objective 1, a cross-sectional survey was carried out in four districts; two in Mara region and two districts in Simiyu region (Figure 1). The districts in Mara region were Tarime and Serengeti while in Simiyu the districts were Maswa and Meatu.

The districts in Mara region have higher number of Tarime cattle while those in Simiyu have Sukuma cattle. In each of the four districts, three wards and two villages per ward were selected, forming a total of 12 wards and 24 villages. Within a village the list of households keeping Tarime or Sukuma zebu cattle were used as a sampling frame from which respondents were picked randomly using a table of random numbers. Ten households per village were sampled, giving a sample size of 60 households in each district (240 respondents in total). The heads of the households were the main respondents. However, other members of the household, whenever necessary, had an opportunity to provide supplementary information. Information collected were: household socio-economic characteristics, livestock production constraints, most important disease in the area, cattle mortality rate due to TBDs in the area, ability of cattle to tolerate ticks and ECF, tick species and their control. This information was collected using a structured questionnaire.



Plate 1: A and B Mature Tarime cattle strain

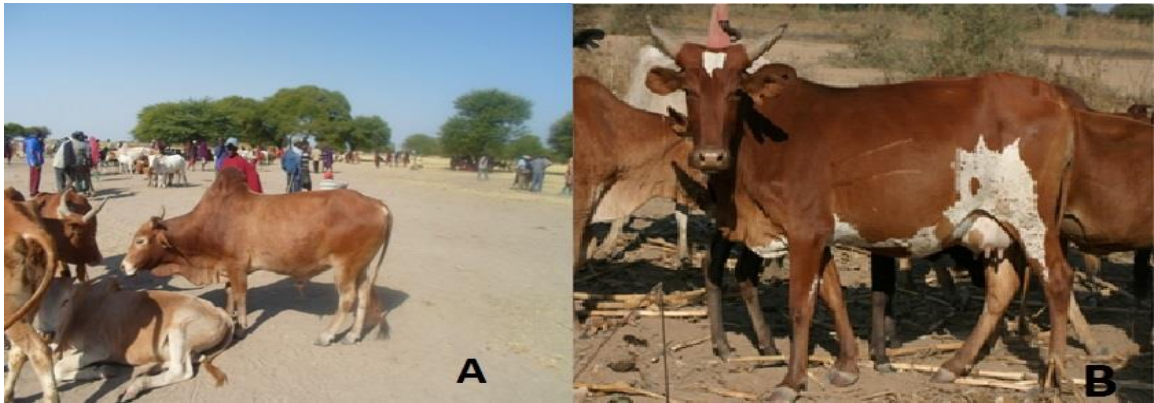


Plate 2: A and B Mature Sukuma cattle strain

The information collected were coded and recorded into the spreadsheets and the data were analyzed using the Statistical Package for Social Sciences (SPSS), statistical software Release 16.0 (SPSS, 2008). The following descriptive statistics were generated: means, standard deviations, frequencies and percentages. The percentage of farmers' response for a particular variable such as age and education of the farmers, experience in keeping livestock, important diseases, common tick species, tick control method used, frequency of dipping/spraying, tolerance of animals to ticks and ECF were compared among the districts using a chi-square test to test whether the proportions in the four districts were different from each other. The differences among the districts were considered significant at  $P \leq 0.05$ . One paper (Paper I) was generated from this study. This paper focused on the perception of livestock farmer's regarding tolerance of their animals to ticks and TBDs. The results from this study gave comparative and general information on the tolerance of the two strains kept by these communities on ticks and TBDs.

To achieve specific objective 2, a study was designed and carried out in the two districts of Mara region, namely Tarime and Serengeti districts. In each district three wards were

selected making a total of six wards. Two villages were purposively selected (based on having large number of Tarime cattle) from each ward making a total of 12 villages for both districts (Figure 1). In each village, 10 households (120 households in total) were randomly selected using random numbers and a total of 360 animals (three per household i.e. one calf, one weaner and one adult animal) were selected for ticks identification and counting as well as blood sampling for *T. parva* detection. The desired sample size for the study was calculated according to the procedure described by Thrusfield (1995).

Tick counts were done according to Londt *et al.* (1979), counting ticks at predilection sites. The predilection sites were head, sternum and hind quarters (Baker and Ducasse, 1967). Visible adult ticks were counted from one side of the animal body and identified using the keys of Mathysse and Colbo (1987). The half body counts were doubled to estimate the number of ticks for the whole body. Animal category, tick type, tick attachment sites, household head, village, ward and district were recorded.

Whole blood samples were collected by jugular vein puncture using vacutainer tubes with EDTA. The samples were labeled and stored in a cool box with ice packs while in the field and later put into a refrigerator until when they were transferred to the laboratory at the Department of Microbiology and Parasitology at SUA for further analyses. Genomic DNA was extracted from 354 whole blood samples using the Pure Gene Blood Core (QIAGEN) Kit (Minnesota, USA) according to the manufacturer's instructions (six samples clotted before DNA extraction and they were omitted). *Theileria parva* genomic DNA was detected using a nested polymerase chain reaction (nPCR). Primers used in the amplification were for a *T. parva*-specific 104-kDa antigen (p104) gene obtained from GenBank (Accession No. M29954) using procedure described by Odongo *et al.* (2010).

The nPCR products were separated on 1.5% agarose gel and visualized in ultra violet (UV) trans-illuminator (Plate 3).

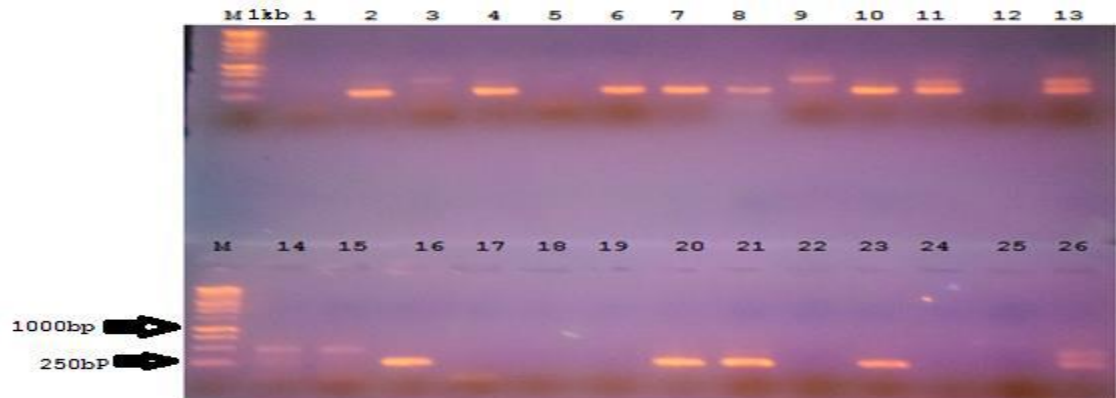


Plate 3: A representation of amplicons obtained from amplification of the *T. parva* p104 gene using nested PCR. An agarose gel of 1.5% was used for analysis of PCR products. M is a 1kb Marker (From fermentas – South Africa). 1 - 11 and 14 – 24 are tested samples while 12 and 25 are Negative controls, 13 and 26 are Positive control

The data obtained from tick count and PCR were coded and analysed using SPSS version 16 (SPSS, 2008). The percentage of animals infested with different tick species and the prevalence of *T. parva* in animals were compared using a chi-square to test the significance of the differences in tick infestation and prevalence of *T. parva* between villages, wards and districts. ANOVA was used to assess the statistical significance differences in tick counts between wards and between districts. The fixed effects assessed were district, ward within district, animal category and attachment site. All results were considered significant at  $p \leq 0.05$ .

Paper II was generated from this study. This paper looked on the tick burden and prevalence of *T. parva* in Tarime zebu cattle kept in Serengeti and Tarime districts (Figure 1).

The results from this study gave comparative information on tick burden and *T. parva* prevalence in this breed when managed in two different geographical locations with different tick management practices.

To achieve specific objective 3, an on-station experiment was conducted at TALIRI-Mabuki Research Center (Figure 1) to observe how Tarime and Sukuma cattle behave on natural condition for tick infestation and *T. parva* infection. *T. parva* antibodies were determined under different tick control regimes and seasons. A total of fifty cattle (25 Tarime and 25 Sukuma) were randomly selected for this study. Animals of each breed were divided into three groups, comprising eight, eight and nine cattle. Animals in groups 1 and 2 were dipped once after two and three weeks, respectively, while those in group three (control group) were not dipped throughout the study period. Data on tick count were taken on weekly basis while blood sample for PCV, *T. parva* parasite and *T. parva* antibody detection were taken at an interval of three weeks. This experiment covered both dry and rainy seasons. Data were analyzed and the results are presented in paper three of this Thesis.

To achieve specific objective 4, a search of peer-reviewed publications on ECF, ticks and ECF tolerant cattle in Tanzania (Plates 1, 2, 4, 5, 6 and 7) was conducted from comprehensive databases, including PubMed, Science Direct, Swetswise, and CAB direct. The search was extended to available theses, conference proceedings and project reports. Keywords were standardized across the databases to produce comparable searches and these were: East Coast fever, *Theileria parva*, *Rhipicephalus appendiculatus*, epidemiology, prevalence, incidence, cattle, tolerance and Tanzania. References of all relevant articles were also searched to identify articles that could have been missed in the search. The search was conducted for all available years in each

database. The keyword search produced several articles. We screened all the articles and then identified the most relevant ones for Tanzania.



Plate 4: A and B Mature Maasai cattle strain

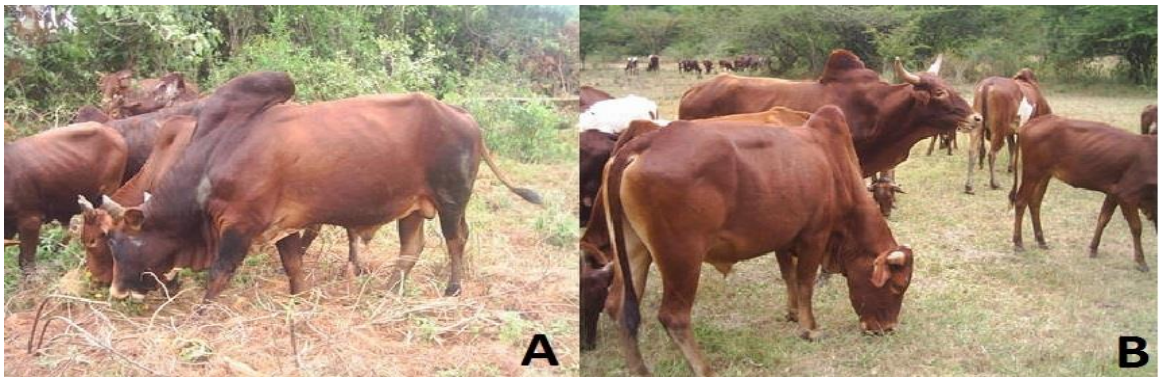


Plate 5: A and B Mature Iringa red cattle strain



Plate 6: Mature Singida white cattle strain



Plate 7: Mature Ufipa cattle strain



## **1.6 Organisation of the Thesis**

This thesis is arranged in six chapters. The first chapter contains an extended abstract and introduction. The abstract gives brief summary of the results from all presented papers. The introductory part gives highlights of background information on TBDs in Tanzania. It also shows the measures which have been taken by both Government and livestock farmers to alleviate the situation as well as their limitations. It also looks on the potential and limitation of using some tolerant indigenous zebu cattle. The chapter also contains the overall theme of the thesis and descriptions of the general methodology of the study. This chapter ends with a list of references to support issues cited in the study. Chapter two to five of the thesis contain four published papers. Each paper is a chapter in this thesis. Chapter six draws research output of the thesis in which the results obtained from each specific objective are synthesized. This chapter also draws general conclusions and recommendations of the study.

## **REFERENCES**

- Baker, M.K. and Ducasse, B.W. (1967). Tick infestation in Natal 1. The predilection sites and seasonal variations of cattle ticks. *Journal of the South African Veterinary Medical Association* 33: 447 – 453.
- Chenyambuga, S.W., Waiswa, C., Saimo, M., Ngumi, P. and Gwakisa, P.S. (2008). Knowledge and perceptions of traditional livestock keepers on tick-borne diseases and sero-prevalence of *Theileria parva* around Lake Victoria Basin. *Livestock Research for Rural Development*. 22: 7 [[http://www.Irrd.org/New\\_folder/4/chen22135.htm](http://www.Irrd.org/New_folder/4/chen22135.htm)]. Site visited on 25/7/ 2012.

- de Castro, J.J. (1991). Resistance to ixodid ticks in cattle with an assessment of its role in tick control in Africa. In: Axford R F E and Owen J B (eds), *Breeding for disease resistance in farm animals*. CABI, Wallingford, UK.
- Kivaria, F.M. (2006). Estimated direct costs associated with tick-borne diseases on cattle in Tanzania. *Tropical Animal Health and Production* 38: 291 – 299.
- Latif, A.A., Punyua, D.K., Nokoe, S. and Capstick, P.B. (1991). Tick infestations on zebu cattle in Western Kenya: Individual host variation. *Journal of Medical Entomology* 28: 114 – 121.
- Londt, J.G.H., Horak, I.G. and de Villiers, I.L. (1979). Parasite of domestic and wild animal in South Africa, XIII, The seasonal incidence of adult ticks (*Acarina: Ixodidae*) on cattle in the northern Transvaal. *Onderpoort Journal of Veterinary Research* 46: 31 – 39.
- Mathysse, J.G. and Colbo, M.H. (1987). The Ixodid Ticks of Uganda. Entomological Society of America, Collage Park, Maryland, USA pp 426.
- Mugisha, A., McLeod, A., Percy, R. and Kyewalabye, E. (2005). Strategies, effectiveness and rationale of vector-borne disease control in the pastoralist system of south-west Uganda. *Tropical Animal Health and Production* 37: 479 – 489.
- Odongo, D.O., Sunter, J.D., Kiara, H.K., Skilton, R.A. and Bishop, R.P. (2010). A nested PCR assay exhibits enhanced sensitivity for detection of *Theileria parva*

infections in bovine blood samples from carrier animals. *Parasitology Research* 106 (2): 357 – 65.

Okuthe, O.S. and Buyu, G.E. (2006). Prevalence and incidence of tick-borne diseases in smallholder farming systems in the western-Kenya highlands. *Veterinary Parasitology* 141: 307 – 312.

SPSS (Statistical Packages for Social Science) (2008). SPSS for Windows, Release 16.0, User Manual, SPSS Inc. Chicago, USA.

Swai, E.S., Karimuribo, E.D., Kambarage, D.M., Moshy, W.E. and Mbise, A.N. (2007). A comparison of seroprevalence and risk factors for *Theileria parva* and *Theileria mutans* in smallholder dairy cattle in Tanga and Iringa regions of Tanzania. *The Veterinary Journal* 174: 390 – 396.

Thrusfield, M. (1995). *Veterinary Epidemiology*, 2<sup>nd</sup> edition, Blackwell Science Ltd, Oxford, UK pp 233.

## CHAPTER TWO

### 2.0 PAPER I

#### **Knowledge and perception on ticks, tick-borne diseases and indigenous cattle tolerance to East Coast fever in agro-pastoral communities of Lake Zone in Tanzania**

**E. L. K. LAISSER**

Ministry of Education and Vocational Training, Inspectorate Department Eastern zone,  
P.O. Box 325, Morogoro, Tanzania

**S. W. Chenyambuga and G. Msalya**

Department of Animal Science and Production, Sokoine University of Agriculture (SUA),  
P.O. Box 3004, Morogoro, Tanzania

**M. J. Kipanyula**

Department of Veterinary Anatomy, SUA, P.O. Box 3016, Morogoro, Tanzania

**R. H. Mdegela and E. D. Karimuribo**

Department of Veterinary Medicine and Public Health, SUA, P.O. Box 3021, Morogoro,  
Tanzania

**A J Mwilawa**

Tanzania Livestock Research Institute, Mabuki, P.O. Box 352, Mwanza, Tanzania

**L J M Kusiluka**

Nelson Mandela African Institute of Science and Technology, P.O. Box 447, Arusha  
Tanzania.

Published in: *Journal of Livestock Research for Rural Development* 27(4). 1<sup>st</sup> April, 2015.

Available on line at: <http://www.lrrd.org/lrrd27/4/lais27064.html>

## **Knowledge and perception on ticks, tick-borne diseases and indigenous cattle tolerance to East Coast fever in agro-pastoral communities of Lake Zone in Tanzania**

**E L K Laisser<sup>1,2</sup>, S W Chenyambuga<sup>2</sup>, G Msalya<sup>2</sup>, M J Kipanyula<sup>3</sup>, R H Mdegela<sup>4</sup>, E D Karimuribo<sup>4</sup>, A J Mwilawa<sup>5</sup> and L J M Kusiluka<sup>6</sup>**

<sup>1</sup> *Ministry of Education and Vocational Training, Inspectorate Department, Eastern Zone, P.O. Box 325, Morogoro, Tanzania:*

[emalaisser@gmail.com](mailto:emalaisser@gmail.com)

<sup>2</sup> *Department of Animal Science and Production, Sokoine University of Agriculture, P.O. Box 3004, Morogoro, Tanzania*

<sup>3</sup> *Department of Veterinary Anatomy, Sokoine University of Agriculture, P.O. Box 3016, Morogoro, Tanzania*

<sup>4</sup> *Department of Veterinary Medicine and Public Health, Sokoine University of Agriculture, P.O. Box 3021, Morogoro, Tanzania*

<sup>5</sup> *Tanzania Livestock Research Institute, Mabuki, P.O. Box 352, Mwanza, Tanzania*

<sup>6</sup> *Nelson Mandela African Institute of Science and Technology, P.O. Box 447, Arusha, Tanzania*

### **Abstract**

This study was carried out to assess farmers' knowledge and perceptions on tick species, tick-borne diseases (TBDs), tick control measures, production constraints and tolerance of Tarime and Sukuma zebu cattle to TBDs. The study involved 240 agro-pastoralists from Serengeti, Tarime, Maswa and Meatu districts in Tanzania. Data were collected through individual interview using a structured questionnaire.

Livestock diseases were ranked as the first important problem affecting cattle production in Serengeti and Tarime districts while in Maswa and Meatu districts lack of livestock feeds during the dry season was ranked as the most important constraints, followed by livestock diseases. Among the diseases affecting cattle, the TBDs ranked first in Serengeti and Tarime while in Maswa and Meatu the TBDs, ranked fourth and sixth, respectively. Most of the livestock farmers interviewed (74%) knew well the signs of the TBDs. Circling/high stepping, red urine, hard dung and swollen lymph nodes were mentioned as clinical symptoms for heart water, babesiosis, anaplasmosis and East Coast fever (ECF), respectively. The majority of the respondents in all districts knew that ECF is caused by ticks, but did not associate the other TBDs with ticks. The most prevalent ticks were bont ticks (*Amblyomma spp*), blue ticks (*Boophilus spp*) and brown ear ticks (*Rhipicephalus appendiculatus*). Most of the farmers interviewed were using acaricide to control ticks, and the most common method of application was hand spraying. All farmers used Oxytetracycline to treat TBDs; however, some farmers used local herbs. Although most farmers knew the signs of TBDs, they were not spraying/dipping their animals on regular basis because of economic reasons and the belief that their animals always carry ticks without being sick or dying and ECF affects only calves. About half of the farmers considered their breeds to be tolerant to ticks and ECF. In conclusion, the livestock

farmers in the Lake zone have substantial knowledge on tick species and TBD symptoms and they have a perception that ECF is not the most important disease compared to the other TBDs.

**Keywords:** *Acaricide application method, tick species, Zebu cattle*

## **Introduction**

Livestock keeping is one of the major economic activities in agro-pastoral and pastoral communities of Tanzania and makes a significant contribution to food security and income (MLFD 2011). Tanzania has 22.8 million cattle, 15.6 million goats, 7.0 million sheep, 35.5 million indigenous chickens, 24.5 million commercial chickens, 2.01 million pigs and 291,960 donkeys (MLFD 2014). Among the livestock species kept in Tanzania, cattle contribute significantly to income, food and nutrition security of livestock keepers. Indigenous breeds of cattle make 95% of the national herd and the remaining are improved dairy (3%) and beef (2%) breeds, with the former saving as the main source of livestock products in the country (Msechu 2001). Tanzania Shorthorn Zebu (TSHZ) is the predominant breed and is comprised by a number of strains i.e. Singida White, Mbulu, Gogo, Chaga, Iringa Red, Sukuma, Maasai, Mkalama Dun, Tarime and Pare (Das and Mkonyi 2003).

In many countries, Tanzania inclusive, Ticks and Tick borne Diseases (TBDs) are the major health impediments to improved livestock production and cause considerable economic losses to livestock keepers as they negatively affect growth, milk production, draft power, fertility, quality of hides and survival of all classes of farm animals. However, control of ticks by using acaricides is increasingly becoming too expensive for the average livestock farmer (Mugisha et al 2005). Currently most livestock keepers do not use appropriate rate of acaricide recommended by the manufacturer due to high prices (Okello-Onen and Rutagwenda 1998).

Studies have shown that the intensive application (on weekly basis) of acaricide is uneconomical and unsustainable in the traditional livestock production system where indigenous cattle are kept (Pegram et al 1993). This is because the conventional tick and TBDs control programmes in many tropical countries were developed for tick eradication aiming to protect introduced exotic cattle breeds. The weekly application of acaricides has been adopted despite the fact that resistance to tick infestation differs among cattle breeds. Zebu cattle have much higher resistance to ticks and TBDs compared to Boran and European breeds (Glass and Jensen 2007).

Little research efforts have been done to put into consideration the knowledge and perception of indigenous/local farmers on disease management of their indigenous animals. The indigenous knowledge of local livestock keepers on tick and TBDs control is of paramount importance in the design of disease control programmes and adds value to modern animal health care system. Hence, the whole concept of tick and TBDs control programme need to be revised to incorporate indigenous knowledge and perceptions of farmers on diseases and available diseases control options (Geerlings 2001). The information on the use of indigenous knowledge in tick and TBDs control is scarce, especially in the Lake Zone of Tanzania where the majority of the livestock are kept. Therefore, epidemiological information based on livestock keepers' knowledge and experiences is required in order to design effective control measures. This study was

conducted to assess the farmers' knowledge and perceptions on ticks, TBD and their control measures, and perceptions of farmers with regard to tolerance of their breeds to TBDs as well as livestock production constraints.

## **Materials and Methods**

### **Study area**

The study was carried out in Tarime and Serengeti districts (Mara region) and Maswa and Meatu districts (Simiyu region) in the Lake Zone of Tanzania between March and June 2013. Mara region lies between latitudes 1° 0' and 2° 31' south of Equator and between longitudes 33° 10' and 35° 15' east of Greenwich while Simiyu region lies between latitude 2° 1' and 4° south of Equator and between longitudes 33° 03' and 35° 01' east of Greenwich. In Tarime and Serengeti districts Tarime Zebu cattle are kept while in Maswa and Meatu districts the Sukuma cattle are kept. Both Tarime and Sukuma cattle belong to the Tanzania Shorthorn zebu breed. The dominant farming system in all districts is agro-pastoral production system in which livestock farmers practice herded grazing in communal and fallow lands.

### **Sampling procedure**

Purposive sampling technique was employed and the sampling frame was districts, villages and finally households. The purposive sampling was used to select the districts and villages with large numbers of the zebu strains which were of interest for the study. In each of the four districts, three wards and two villages per ward were selected, forming a total of 12 wards and 24 villages. Within a village the list of households keeping Tarime or Sukuma zebu cattle were used as a sampling frame from which respondents were picked randomly using a table of random numbers. Ten households per village were sampled, giving a sample size of 60 households in each district (240 respondents in total). The heads of the households were the main respondents. However, other members of the household, whenever necessary, had an opportunity to provide supplementary information. Information collected was; household socio-economic characteristics, livestock production constraints, most important disease in the area, cattle mortality rate due to TBDs in the area, ticks species and their control. This information was collected using structured questionnaires.

### **Data analysis**

The information collected were coded and recorded into the spreadsheets and the data were analysed using the Statistical Package for Social Sciences (SPSS), statistical software Release 16.0 (SPSS 2008). The following descriptive statistics were generated: means, standard deviations, frequencies and percentages. The percentage of farmers' response for a particular variable such as age and education of the farmers, experience in keeping livestock, important diseases, common tick species, tick control method used, frequency of dipping/spraying, tolerance of animals to ticks and ECF were compared among the districts using a chi-square test to test whether the proportions in the four districts were different from each other. The differences among the districts were considered significant at  $P \leq 0.05$ .

## **Results**

### **Household social characteristics**

Most of the farmers in the surveyed districts were above 35 years old (Table 1), indicating that livestock farming is commonly practiced by old people in the study areas. More than

half of the respondents had at least basic education. There were more farmers with primary education in Meatu, Serengeti and Tarime compared to Maswa. Most of the respondents had experience of more than 10 years in livestock keeping.

### Livestock production constraints

Livestock diseases were ranked as the topmost problem affecting cattle production in Serengeti and Tarime districts and were reported to cause high mortalities and reduced production (Table 2). The farmers in Maswa and Meatu ranked lack of livestock feeds as the major constraints for cattle production, especially during the dry season. The reason is due to the fact that most land in the district is allocated to crop production and forest reserve leaving small marginal land for livestock keeping. Shortage of feeds and water were ranked 2<sup>nd</sup> and 3<sup>rd</sup>, respectively. In Serengeti and Tarime districts it was observed that most farmers depended on the great Mara river, although high crocodile population in the river was reported to pose a threat to livestock when drinking water. Other constraints included high price of veterinary drugs, low genetic potential of zebu cattle, and lack of market for their animals especially during the rainy season when roads to livestock markets are not passable and these problems were ranked 5<sup>th</sup>, 6<sup>th</sup> and 7<sup>th</sup>, respectively.

**Table 1:** Household social characteristics

Variable	Districts					P-value
	Maswa	Meatu	Serengeti	Tarime	Average	
<i>Age of household head</i>						
15-34 Years	21.7%	21.7%	10.0%	10.0%	17.1%	0.105
35-64 Years	70.0%	65.0%	76.7%	71.7%	68.7%	
Above 64 yrs	8.3%	13.3%	13.3%	18.3%	13.3%	
<i>Level of education</i>						
No formal education	41.7%	14.8%	13.6%	10.0%	20.0%	0.0001
Standard four education	0.0%	6.6%	6.8%	20.0%	8.7%	
Primary education	53.3%	67.2%	76.3%	66.7%	65.9%	
Form four secondary education	0.0%	6.6%	6.8%	20.0%	8.4%	
Form six and tertiary education	0.0%	1.6%	0.0%	0.0%	0.4%	
<i>Experience on cattle keeping</i>						
≤ 10 years	10.0%	19.7%	37.3%	36.7%	25.9%	0.001
> 10 years	90.0%	80.3%	62.7%	63.3%	75.8%	

(Kosgey 2004)

**Table 2:** Ranking of constraints to cattle production in the study areas

Constraints	Ranking order				Chi square	df	P - value
	Maswa	Meatu	Serengeti	Tarime			
Diseases	(0.192) 2	(0.229) 2	(0.174) 1	(0.170) 1	56.50	12	0.0001
Shortage of feeds and grazing land	(0.262) 1	(0.250) 1	(0.152) 2	(0.165) 2	33.58	12	0.001
Shortage of water	(0.147) 3	(0.160) 3	(0.126) 4	(0.145) 3	49.07	12	0.0001
Low genetic potential of the animals	(0.068) 7	(0.083) 4	(0.117) 5	(0.108) 5	134.82	12	0.0001
Shortage of labour	(0.065) 8	(0.058) 8	(0.105) 6	(0.096) 7	107.92	12	0.0001
Lack of markets for livestock products	(0.078) 5	(0.075) 6	(0.088) 8	(0.089) 8	124.52	12	0.0001
High price of veterinary drugs	(0.118) 4	(0.067) 7	(0.150) 3	(0.127) 4	151.92	12	0.0001
Poor fertility of the animals	(0.070) 6	(0.078) 5	(0.090) 8	(0.100) 6	109.02	12	0.0001

Index in bracket calculated as =

$$\frac{\text{Sum of } (5 \times \text{rank1}) + (4 \times \text{rank2}) + (3 \times \text{rank3}) + (2 \times \text{rank4}) + (1 \times \text{rank5})}{(\text{Totalr5} \times \text{rank1}) + (\text{Totalr4} \times \text{rank2}) + (\text{Totalr3} \times \text{rank3}) + (\text{Totalr2} \times \text{rank4}) + (\text{Totalr5} \times \text{rank5})}$$



### Important Diseases in the study areas

The respondents were asked to rank the diseases according to frequency of occurrence, morbidity and animal deaths resulting from each disease. The most predominant diseases (using pair wise score ranking) were ranked differently based on the farmers' experiences in each district (Table 3). Blackquarter (BQ), lumpy skin disease (LSD) and foot and mouth disease (FMD) were ranked 1<sup>st</sup>, 2<sup>nd</sup> and 3<sup>rd</sup> in Maswa and Meatu while in Serengeti and Tarime districts babesiosis, heart water and FMD were ranked as 1<sup>st</sup>, 2<sup>nd</sup> and 3<sup>rd</sup>, respectively. However, based on the overall scores the result show that, the most important disease was FMD (with 32 scores), followed by babesiosis and LSD (with 31 scores) while ECF had a score of 23.

The majority of livestock keepers were aware of the symptoms of different TBDs in all the districts surveyed. The symptoms that were mentioned included swelling of the external lymph nodes and circling or high stepping for East Coast fever and Heartwater, respectively. Babesiosis was reported to be characterised by passing of red urine while Anaplasmosis was described by emaciation and production of hard dung. The livestock keepers interviewed had adequate knowledge about TBDs and they knew the different diseases in their vernacular languages. For instance, in Serengeti and Tarime districts ECF was called "Chintura" by the kurya people while in Maswa and Meatu it was called "Madundo" in sukuma local language. Although the respondents in Maswa and Meatu did not rank TBDs as the most important diseases, the mortality reported by the farmers in the area shows that TBDs, specifically Babesiosis and Heartwater, were the leading diseases in causing deaths (Table 4). Other diseases which were ranked high included BQ, LSD, FMD, trypanosomiasis, CBPP and helminthiasis.

**Table 3:** Most important diseases as perceived by farmers in the four districts

Disease	Ranking order				Overall score
	Maswa	Meatu	Serengeti	Tarime	
Anaplasmosis	8	8	7	7	14
Babesiosis	7	4	1	1	31
Blackquarter	1	2	8	8	25
Contagious Bovine Pleuropneumonia	6	9	9	10	10
East Coast Fever	4	7	4	6	23
Foot and Mouth Disease	3	3	3	3	32
Heart water	9	6	2	2	25
Helminthiasis	10	10	10	9	5
Lumpy skin disease	2	1	5	4	31
Trypanosomiasis	5	5	6	5	23

Note: Each disease was given a score as follows; 1<sup>st</sup> Disease =10 points, 2<sup>nd</sup> Disease = 9 points, 3<sup>rd</sup> Disease = 8 points, 4<sup>th</sup> Disease = 7 points, 5<sup>th</sup> Disease = 6 points, 6<sup>th</sup> Disease = 5 points, 7<sup>th</sup> Disease = 4 points, 8<sup>th</sup> Disease = 3 points, 9<sup>th</sup> Disease = 2 points and 10<sup>th</sup> Disease =1 point.

**Table 4:** Number of animal effected by Tick Borne Diseases and resulting mortality

	Maswa		Meatu		Serengeti		Tarime		P-value
	Contracted	Died %	Contracted	Died %	Contracted	Died %	Contracted	Died %	
Anaplasmosis	50	21 42	60	37 62	30	13 43	60	39 65	0.61
Babesiosis	18	8 44	200	176 88	66	21 32	112	100 89	0.22
East Coast fever	5	3 60	55	42 76	18	2 11	59	43 73	0.60
Heart water	5	3 60	112	88 79	81	11 14	80	56 70	0.66

### Mortality rates of TBDs infected animals

Farmers were able to recall exactly the number of cases when death occurred as well as the clinical signs shown by the animals before death. They were also able to remember the months when the death occurred. In general most deaths occurred during or just after the rainy season. Babesiosis was the leading cause of death in Meatu (88%) and Tarime (89%) while heartwater and anaplasmosis were the main cause of death in Maswa and Serengeti (Table 4).

### Tick species and control methods

The most common tick species found in the study areas (Table 5) were bont ticks (*Amblyomma spp*), blue ticks (*Boophilus spp*) and brown ear ticks (*Rhipicephalus appendiculatus*). Ticks were reported to be common after the rains. Most of the interviewed farmers mentioned that the brown ear ticks were commonly seen on both calves and adults while the other ticks were rarely seen on calves. The farmers' knowledge of ticks was influenced by geographical location and the extent of animals' exposure and susceptibility to ticks. Farmers in Serengeti and Tarime districts, where tick infestation was high, were able to identify different species of ticks by their vernacular languages e.g. brown ear ticks (*Rhipicephalus*) are called Bitotona, blue ticks (*Boophilus*) are known as Rituru and bont ticks (*Amblyomma*) called Engoha. In Maswa and Meatu districts, where the intensity of ticks was low, no specific names were mentioned and the farmers just identified all species as "ng'hundya" in Sukuma language, which means ticks.

The majority of the interviewed farmers practiced tick control using either dipping or spraying with acaricide as a means of controlling TBDs while the rest reported that they do not exercise tick control measures. Out of 240 respondents interviewed, close on half acknowledged that their animals are tolerant to ticks and ECF. However, in Maswa only few farmers said that their animals were tolerant to ticks.

**Table 5:** Common tick species, tick control methods and opinions of livestock keepers on tolerance of their breeds to ticks and tick-borne diseases

Variable	Districts				Mean Percentage	P - value
	Maswa	Meatu	Serengeti	Tarime		
<b>Type of ticks</b>						
Brown ear ticks	70.8	66.7	76.9	86.7	70.3	0.22
Blue ticks	80.0	96.0	78.2	79.6	83.5	0.001
Bont ticks	90.2	81.8	86.2	83.8	85.5	0.29
<b>Acaricide application method</b>						
Dipping	0.00	0.00	20	68.3	22.1	0.0001
Spraying	91.7	96.7	68.1	25.1	70.4	0.0001
Neither	8.3	3.3	11.9	6.6	7.5	0.35
<b>Animals are tolerant to ticks</b>						
Yes	50	10	58	48	41.5	0.000
No	50	90	42	52	58.5	0.000
<b>Animals are tolerant to ECF</b>						
Yes	50	38	54	32	43.5	0.000
No	50	62	46	68	56.5	0.000

### Frequencies of spraying/dipping to control ticks

Dipping/spraying regime for tick control was irregular, ranging from once per week to no dipping/spraying at all (Table 6). The majority of the farmers reported that they apply acaricide once per month. Farmers who were applying acaricides by spraying knew the brands, price for each brand, concentration recommended for each brand and could compare the efficiency of different types of acaricides used. Some of the brands used were super dip (clorhexidine gluconate), paranex (alphacypermethrin), dominex (alphacypermethrin), cybadip (cypermethrin) and tixfix (amitraz). Those who were controlling ticks by dipping did not know the type of acaricides used, but only knew the price of dipping animals (i.e. Tshs 200.00 per animal for cattle and Tshs 50.00 per animal for small ruminants). According to the respondents this price was prohibitive for those having larger herds. The farmers who were practicing dipping also did not know the concentration of acaricides in the dip.

**Table 6: Frequencies of spraying/dipping for tick control in the four districts**

Spray frequencies	Number of the respondent (%)				Average (%)	P - value
	Maswa	Meatu	Serengeti	Tarime		
Once per week	12	20	10	10	13	0.0001
Twice per month	0	0	25	23	12	0.0001
Once per month	57.7	66.7	58.4	41	55.9	0.0001
Once every three month	5	15	0	0	5	0.0001
Twice per year	5	10	0	15	7.5	0.0001
Once per year	12	15	0	0	6.8	0.0001
Not at all	8.3	3.3	6.6	11.9	7.3	0.0001

## Discussion

### Household demographic characteristics

The age, education and experience of the household heads observed in Maswa, Meatu, Serengeti and Tarime districts conform to those reported by other researchers elsewhere (Chenyambuga et al 2008; Kivaria et al 2012). These results indicate that the majority of household heads were in the active age group, attained formal basic education and have a long experience in livestock production. This suggests that the farmers interviewed have good knowledge and skills on livestock diseases and could provide relevant information on how to manage and control them. Nkonya et al (2004) reported that in any rural community education provide better opportunities to access information and services and enable farmers to take correct actions. This in turn makes it possible for the local farmers to shift from traditional to modern way of practices/life. Furthermore, farmers with formal education can have a good opinion on how their breed can be managed for sustainability (URT 2002).

### Livestock production constraints

Livestock diseases were ranked as the major constraints of cattle production in Maswa, Meatu, Serengeti and Tarime districts. This observation is in agreement with the findings reported by other researchers (Chenyambuga et al 2008; Maingi and Njoroge 2010). Tick-borne diseases were the most important diseases in Serengeti and Tarime districts while BQ and LSD were ranked as the most important diseases in Maswa and Meatu districts. This is probably associated with the higher amount of rainfall in the former districts

compared to the latter districts. Tick-borne diseases are more prevalent in areas with high rainfall due to high tick infestations caused by the conducive environment (Ohaga et al 2007).

### **Knowledge and perceptions of livestock farmers on ticks, tick-borne diseases and their control measures**

The respondents' good knowledge on diseases can partly be attributed to the art of diagnosis and treating livestock diseases acquired through experiences whereby all family members are involved in animals management. In the traditional societies knowledge and skills on livestock management are usually passed from fathers to children when they are still very young such that when one grows up he is able to take care of his herd. The traditional knowledge of disease management among pastoralists has been reported by FAO/links (2000), with the recommendation of the need to preserve this knowledge. In general the farmers were knowledgeable on ticks and TBDs, though there were some differences among the districts influenced by geographical location and the extent of exposure to tick infestation. The farmers' opinion that ticks are most common after the rains is due to the fact that ticks occur throughout the year and during the rainy season farmers have other farm activities, hence being unable to make close observations to their animals. The same observation has been reported by Chenyambuga et al (2008).

Other studies based on participatory research methods (Mugisha et al 2005) in Uganda have reported ECF to be the most prevalent cattle disease, followed by trypanosomiasis. In Tanzania ECF, anaplasmosis and heartwater have been reported to be one of the most important killer diseases (Swai et al 2007). However, in this study the livestock farmers in Maswa, Meatu, Serengeti and Tarime districts considered ECF as a minor problem. This is because of the farmers' perception that Tarime and Sukuma zebu cattle are tolerant to ticks and TBDs. While other TBDs were a problem to all age groups, farmers pointed out that ECF is a problem only to the calves. This is in agreement with Chenyambuga et al (2008) who reported that ECF is perceived by most farmers as the disease of calves.

Our observation show that, a number of diseases were treated as they occurred, including ECF, anaplasmosis, heartwater and internal parasites. However, cattle vaccinations against TBDs were not carried out in these areas. Treatments for disease were jointly administered by veterinarians and individual farmers who have acquired the knowledge through experience. In the four districts surveyed, it is common to see farmers procuring drugs in bulk and acaricides during the livestock auction days. The common drug used to treat TBDs was Oxytetracycline. In addition to Oxytetracycline treatment, the livestock keepers commonly practice lymph node burning with hot iron for the treatment of ECF, particularly in Maswa and Meatu. This is the evidence that the farmers in the study areas have adequate knowledge on ECF. These findings on farmers' knowledge on disease and their control concurs with that reported by Jacob et al (2004) that pastoralists have superior diagnostic skills for animal diseases and their diagnosis conform to the veterinarian disease diagnosis criteria. This knowledge is orally passed on from one generation to the next, particularly from the elders to the young.

The results on the use of acaricide to control ticks and tick borne diseases disagree with Chenyambuga et al (2008) who reported that in some wards of Tarime district most farmers do not use acaricide to control ticks and TBDs due to the belief that their animals are tolerant. Our results showed that, even though most farmers still believe that their animals are tolerant to diseases, they have changed the attitudes with regard to

dipping/spraying of their animals. More farmers reported that they dip their animals, but this depended on the availability/accessibility of dips. The farmers living far away from the dips reported that they spray their animals. The reason for the change in attitude was that many farmers have been made aware about the effects of ticks and TBDs through extension services provided by the government using village extension officers (Laisser et al 2014). However, the spraying/dipping regime practiced by the farmers was different from the recommended routine dipping of once per two weeks for indigenous cattle in tick-borne disease endemic areas (Glass and Jensen 2007). In the present study the majority of the farmers were spraying/dipping once per month. The main reason given was that the high cost of acaricides prohibits the adoption of weekly or bi-weekly dipping. This observation is in agreement with the findings reported by Mugisha et al (2005) in pastoral societies of Uganda. Generally, the farmers have adopted irregular use of acaricide which is not based on a well planned tick control programme. This is due to the fact that, the intensive application (weekly application) of acaricide is uneconomical and unsustainable in indigenous cattle as pointed out by Pegram et al (1993). This study has revealed that most farmers use hand spray to apply acaricides to animals and they are aware that the regular acaricide application is the most effective way for TBDs control, but they do not apply regularly due to economic reason. This is in agreement with the observation made by Mugisha et al (2005) that spraying is the most preferred method for acaricide application in pastoral and agro-pastoral communities. However, the tendencies of some farmers to spray acaricide on the animals when sleeping do not guarantee that all parts of animal body become in contact with the acaricides. This practice is not efficient in killing all ticks and the problem is aggravated by the fact that inappropriate dilutions of acaricides are used.

The inappropriate application of acaricides coupled with the fact that animals sprayed intermingle with other animals which have not been sprayed/dipped when grazing in the communal lands can lead to development of tick resistance to acaricides. In the traditional livestock production systems where animals from different herds are mixed during grazing, it is suggested that dipping should be used for applying acaricides as it is more efficient and reliable in controlling ticks compared to spraying. When spraying is opted, farmers need to be trained on how to prepare the correct dilution of the acaricide and the sites for tick attachment on the body of the animal where spraying should be focused. It also important for livestock extension officers, before introducing any strict tick control system to consider farmers experience. In other study it was found that in some wards of Serengeti district where strict tick control measure was implemented, the levels of tick infestation decreased, but increased the incidences of animal to succumb to ECF infection compared to the wards in which there was no strict dipping/spraying (Laisser et al 2014).

Although farmers in Maswa and Meatu did not rank TBDs as the most important diseases the mortality percentages reported by the farmers in the area show that TBDs, specifically babesiosis was the leading cause of death. In Maswa and Meatu the high rank was given to BQ due to the fact that at the time of this survey there was an outbreak of BQ disease in the area and farmers tended to recall the event which was burning at that particular time.

The difference in ranking of tick-borne diseases between Serengeti and Tarime on one hand and Maswa and Meatu on the other hand is due to the different management systems. In Serengeti and Tarime cattle graze in communal land throughout the year. This grazing system makes it difficult to control animal diseases in pastoral and agro-pastoral communities due to mixing of herds from different households. Furthermore, this practice

tends to enhance the spread of ticks and TBD infections across the herds (Ogutu 2012). In Maswa and Meatu, animals from different herds do not mix and each farmer grazes his/her herd in a private grazing area. This is because of the shortage of grazing areas and each farmer needs to reserve a portion of grazing land known as “Kitiri” for using during the dry season. This kind of management helps to reduce tick burden and spread of disease incidences. Furthermore, grazing around the National park noted in Serengeti district is a predisposing factor for tick-borne diseases like ECF which can spread from wild buffalo to cattle (Marcellino et al 2012). It is suggested that farmers in all districts adopt controlled grazing and feed conservation as these can significantly reduce disease incidences of their livestock.

### **Farmers’ perception on tolerance of Tarime and Sukuma breeds to ticks and East Coast fever**

In Serengeti and Tarime districts, the most common breed kept by local people is the Tarime zebu. This strain of TSHZ was the most preferred breed by the majority of the farmers in both districts. The farmers preferred this breed because they consider it to be more tolerant to ticks and ECF compared to the other TSHZ strains and they can survive without dipping/spraying with acaricide. This concurs with the findings reported by Chenyambuga et al (2008) in some wards of Tarime district. In Maswa and Meatu districts the predominant breed was the Sukuma zebu cattle. The livestock farmers in these districts preferred this breed because of its medium size, good shape and udder size, well placed teats and its docile temperament. The same findings have been reported by Akeyo (2012). In all four districts, disease resistance, low input in terms of treatment, feeding and ability of animals to survive under the harsh local conditions were the main reasons for keeping the local breeds. This observation concurs with the findings reported by Wambura et al (1998) who found zebu cattle to be relatively resistant to tick infestation compared to crossbred animals.

The general perception of the livestock keepers in the four districts was that their local cattle are tolerant to ECF. The belief that Tarime and Sukuma cattle are tolerant to ECF is supported by the evidence provided by the respondents that their animals survive without regular dipping/spraying and that infected animals do recover without treatment using veterinary drugs. This implies that the indigenous breeds in the Lake zone of Tanzania possess survival traits which enable them to live and produce under tick challenges. This is in agreement with Rege and Tawah (1999) who stated that indigenous cattle are blessed with tick resistance and tolerance to vector-borne diseases and they perform better than exotic breeds under low-input conditions, climatic stresses, especially during times of drought. However, according to Chenyambuga et al (2008) and Kipronol (2009), ECF, which is caused by *Theileria parva*, has more serious effects on calves than in adult cattle. Therefore, calves need to be protected by regular dipping/spraying as they are important for herd growth and form the replacement stock.

### **Conclusions**

Livestock diseases are the most important constraints to cattle production in the Lake zone regions of Tanzania. These are followed by shortage of forages and water during the dry season and shortage of grazing land. Among the diseases, tick-borne diseases rank first in the agro-pastoral communities of Lake Zone. The livestock farmers in the Lake zone have substantial knowledge on ticks and TBDs symptoms. Despite the extensive

knowledge, most livestock farmers do not apply acaricide regularly to control TBDs due to economic reason and the belief that their animals can tolerate ticks and TBDs. Tick control strategies should be harmonized with the indigenous knowledge of the livestock farmers on tolerance of local breeds to ticks and tick-borne diseases.

## Acknowledgements

The authors are very grateful for the financial support from the Norwegian Agency for International Development (NORAD) provided through the programme for Enhancing Pro-poor Innovation in Natural Resources and Agricultural Value Chains (EPINAV) at Sokoine University of Agriculture, Tanzania. Finally, we would like to thank the District Executive Directors, District Livestock/Veterinary Officers, Village Extension Officers and livestock keepers in Maswa, Meatu, Serengeti and Tarime districts.

## Conflict of interest

The authors declare that they have no conflict of interest and this document is their original research work done in Lake Zone of Tanzania and no part of it has been submitted somewhere else for conference presentation or publication.

## References

- Akeyo E S 2012** Phenotypic characterization and slaughter characteristics of Sukuma cattle in Maswa and Meatu districts, Shinyanga region, MSc. Dissertation, Sokoine University of Agriculture, Tanzania.
- Chenyambuga S W, Waiswa C, Saimo M, Ngumi P and Gwakisa P S 2008** Knowledge and perceptions of traditional livestock keepers on tick-borne diseases and sero-prevalence of *Theileria parva* around Lake Victoria Basin. *Livestock Research for Rural Development*. Volume 22, Article # 7 Retrieved July 25, 2012, from [http://www.Irrd.org/New\\_folder/4/chen22135.htm](http://www.Irrd.org/New_folder/4/chen22135.htm)
- Das S M and Mkonyi J I 2003** Important aspects of conservation of indigenous cattle in Tanzania. A review In Tanzania Society of Animal Production Conference series 30: 59 – 70.
- FAO/ LinKS 2000** Benefits and Risks of Sharing Local Knowledge. LinKS Technical Report No 3, FAO LinKS Project, Dar-es-Salaam.
- Geerlings Ellen 2001** Sheep husbandry and ethno veterinary knowledge of Raika sheep pastoralists in Rajasthan, India, MSc thesis, Wageningen University, Netherlands, 114 pp.
- Glass E J and Jensen K 2007** Resistance and susceptibility to protozoan parasite of cattle – Gene expression differences in macrophages from different breeds of cattle. *Veterinary Immunology and Immunopathology* 120 (1-2): 20-30.
- Jacob M O, Farah K O and Ekaya W N 2004** Indigenous knowledge. The basis of the Maasai ethnoveterinary diagnostic skills. *Journal of Human Ecology* 16 (1): 43 – 48.
- Kipronol K A 2009** The Epidemiology and Control of East Coast fever and other Vector-borne Diseases, Perceptions of the Pastoral Communities in Valley Province, Kenya.
- Kivaria F M, Kapaga A M, Mbassa G K, Mtui P F and Wani R J 2012** Epidemiological perspectives of ticks and tick-borne diseases in South Sudan, Cross-sectional survey results, Retrieved 1<sup>st</sup> January, 2014, from <http://www.ojvr.org/index.php/ojvr/article/viewFile/400/693>
- Kosegey I S 2004** Breeding objectives and breeding strategies for small ruminants in the Tropics. Ph.D. Thesis, Wageningen University. The Netherlands, 272 pp.
- Laisser E L K, Kipanyula M J, Msalya G, Mwege E D, Mdegela R H, Karimuribo E D, Kusiluka L, Mwilawa A J and Chenyambuga S W 2014** Tick burden and prevalence of *Theileria parva* infection in Tarime zebu cattle in the lake zone of Tanzania. *Tropical Animal Health and Production*, 46 (8): 1397-1406.
- Maingi N and Njoroge G K 2010** Constraints on production, disease perceptions and ticks and helminthes control practices on dairy cattle farms in Nyandarua District, Kenya. *Livestock Research for Rural*

Development. Volume 22, Article # 138 Retrieved March 12, 2013, from

<http://www.lrrd.org/lrrd22/8/main22138.htm>

**Marcelino W L, Salih D A, Julla I I and El Hussein A R M 2012** Seroprevalence of East Coast fever in Central Equatorial State South Sudan. *Veterinaria Itliana*, 48 (4): 379 -385.

**MLFD 2011** Ministry of Livestock and Fisheries Development. Budget Speech 2011/2012, Dodoma, Tanzania, Available at <http://www.mifugouvuvu.go.tz>.

**MLFD 2014** Ministry of Livestock and Fisheries Development. Budget Speech 2014/2015, Dodoma, Tanzania, Available at <http://www.mifugouvuvu.go.tz>.

**Msechu J K 2001** Institutional framework for animal genetic resources management in Tanzania, In Kifaro , C.G., Kurwijila, R.L., Chenyambuga, S.W. and Chilewa, P.R. (Editors), Proceedings of SUA-MU-ENRECA Project Workshop on Farm Animal Genetic Resources, 6<sup>th</sup> August 2001, Morogoro, Tanzania, pp. 27–34.

**Mugisha A, McLeod A, Percy R and Kyewalabye E 2005** Strategies, effectiveness and rationale of vector-borne disease control in the pastoralist system of south-west Uganda. *Tropical Animal Health and Production*, 37: 479 – 489.

**Nkonya E, Penda J, Jagger P, Sserunkuuma D, Kaizi C and Ssali H 2004** Strategies for sustainable land management and poverty reduction in Uganda, Research Report, 133, International Food Policy Research Institute, Washington DC. 36.

**Ogutu F O 2012** The Animal Health, Zoonoses and Food Safety Risks Identification and Ranking in Morogoro and Tanga Regions of Tanzania, MSc. Dissertation, Wageningen University, the Netherlands.

**Ohaga S O, Konkwaro E D, Ndiege I O, Hassanali A And Saini R K 2007** Livestock farmers' perception and epiderminology of bovine trypanosomiasis in Kwale District, Kenya Preventive Veterinary Medicine, 80: 24 – 33.

**Okello-Onen J and Rutagwenda T 1998** The status of East Coast fever, causes of calf mortality and abortion in cattle in the Ankole ranching scheme, Mbarara district, Uganda, GTZ/Integrated pastoral development project, February 1998.

**Pegram R G, Tachell R J, Decastro J J, Chizyuka H G B, Creek M J, Mccosker P J, Moran M C and Nigarura G 1993** Tick control: new concepts, *World Animal Review*, 74/75: 1 – 2.

**Rege J E O and Tawah C L 1999** The state of African cattle genetic resources II, Geographical distribution, characteristics and uses of present-day breeds and strains; *Animal Genetic Resources Information*, 26: 1-25.

**SPSS 2008** Statistical Packages for Social Science for Windows, Release 16.0, User Manual, SPSS Inc. Chicago, USA.

**Swai E S, Karimuribo E D, Kambarage D M, Moshy W E and Mbise A N 2007** A comparison of seroprevalence and risk factors for *Theileria parva* and *Theileria mutans* in smallholder dairy cattle in the Tanga and Iringa regions of Tanzania. *The Veterinary Journal*, 174: 390 – 396.

**URT 2002:** United Republic of Tanzania, Census Report.

**Wambura P N, Gwakisa P S, Silayo R S and Rugaimukamu E A 1998** Breed-associated resistance to tick infestation in *Bos indicus* and their crosses with *Bos taurus*; *Veterinary Parasitology*, 77: 63–70.

*Received 3 January 2015; Accepted 13 March 2015; Published 1 April 2015*



## **CHAPTER THREE**

### **3.0 PAPER II**

#### **Tick burden and prevalence of *Theileria parva* infection in Tarime zebu cattle in the lake zone of Tanzania**

**E. L. K. LAISSER**

Ministry of Education and Vocational Training, Inspectorate Department Eastern zone,  
P.O. Box 325, Morogoro, Tanzania

**S. W. Chenyambuga and G. Msalya**

Department of Animal Science and Production, Sokoine University of Agriculture (SUA),  
P.O. Box 3004, Morogoro, Tanzania

**M. J. Kipanyula**

Department of Veterinary Anatomy, SUA, P.O. Box 3016, Morogoro, Tanzania

**E. D. Mwega**

Department of Microbiology and Parasitology, SUA, P.O. Box 3019, Morogoro,  
Tanzania

**R. H. Mdegela and E. D. Karimuribo**

Department of Veterinary Medicine and Public Health, SUA, P.O. Box 3021, Morogoro,  
Tanzania

**A. J. Mwilawa**

Tanzania Livestock Research Institute, Mabuki, P.O. Box 352, Mwanza, Tanzania

**L. J. M. Kusiluka**

Nelson Mandela African Institute of Science and Technology, P.O. Box 447, Arusha  
Tanzania.

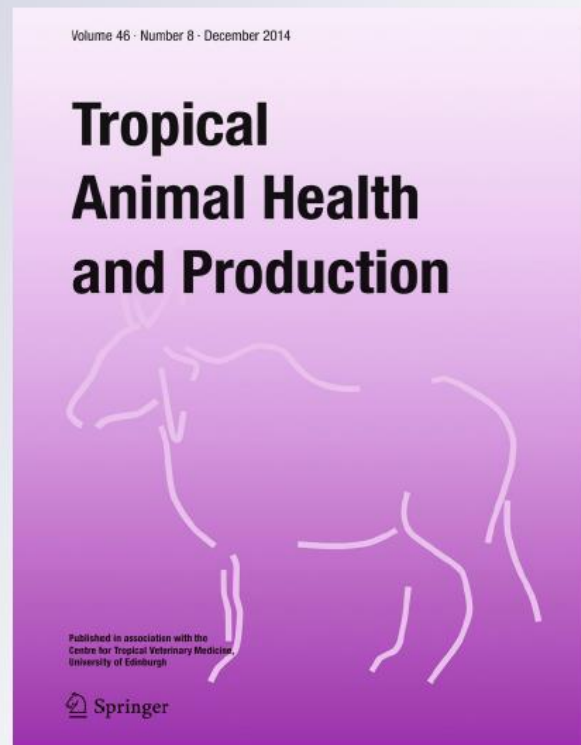
*Tick burden and prevalence of Theileria parva infection in Tarime zebu cattle in the lake zone of Tanzania*

**Emmanuel Levillal Katamboi Laisser,  
Maulilio John Kipanyula, George  
Msalya, Robinson Hammerthon  
Mdegela, Eron Daniel Karimuribo, et al.**

**Tropical Animal Health and  
Production**

ISSN 0049-4747  
Volume 46  
Number 8

Trop Anim Health Prod (2014)  
46:1391-1396  
DOI 10.1007/s11250-014-0651-0



Your article is protected by copyright and all rights are held exclusively by Springer Science +Business Media Dordrecht. This e-offprint is for personal use only and shall not be self-archived in electronic repositories. If you wish to self-archive your article, please use the accepted manuscript version for posting on your own website. You may further deposit the accepted manuscript version in any repository, provided it is only made publicly available 12 months after official publication or later and provided acknowledgement is given to the original source of publication and a link is inserted to the published article on Springer's website. The link must be accompanied by the following text: "The final publication is available at [link.springer.com](http://link.springer.com)".

## Tick burden and prevalence of *Theileria parva* infection in Tarime zebu cattle in the lake zone of Tanzania

Emmanuel Levillal Katamboi Laisser · Maulilio John Kipanyula · George Msalya · Robinson Hammerthon Mdegela · Esron Daniel Karimuribo · Anjello Joseph Mwilawa · Elisa Daniel Mwega · Lughano Kusiluka · Sebastian Wilson Chenyambuga

Received: 28 February 2014 / Accepted: 18 July 2014 / Published online: 5 August 2014  
© Springer Science+Business Media Dordrecht 2014

**Abstract** This study was carried out to assess the distribution, abundance of different tick genera and prevalence of *Theileria parva* infection in Tarime zebu cattle kept in selected wards of Serengeti and Tarime districts in Mara region. Adult ticks were identified and counted from half body parts of 360 animals which were extensively managed in communal land with natural pastures. Concurrently, blood samples were collected and thereafter DNA extracted and a nested polymerase chain reaction (nPCR) was done using primers specific for p104 gene to detect the presence of *T. parva* DNA. Ticks were

identified into four groups: *Amblyomma* genus, *Boophilus* sub-genus of *Rhipicephalus* genus, other species of *Rhipicephalus*, and *Hyalomma* genus. *Rhipicephalus* genus accounted for 71.8 % of the total ticks, whereas *Amblyomma*, *Boophilus* sub-genus of *Rhipicephalus* genus and *Hyalomma* constituted 14.1, 14.0 and 0.1 %, respectively. There were more animals ( $p < 0.05$ ) infested with ticks in Tarime district (96.1 %) than in Serengeti (61.7 %). The average counts of ticks were higher in adult animals ( $p < 0.05$ ) than in young animals. The overall prevalence of *T. parva* was 27.7 % and was higher ( $p < 0.05$ ) in Serengeti (38.3 %) than in Tarime district (16.7 %). However, all animals tested positive for *T. parva* did not show any clinical signs of East Coast fever (ECF), suggesting the existence of subclinical infection in Tarime zebu. These results suggest that Tarime cattle can tolerate ECF infection and are likely to serve as potential carriers of *T. parva* to other less-tolerant cattle breeds in mixed herds. Since Tarime cattle are preferred by most farmers with mixed herds, routine screening for *T. parva* is highly recommended to minimize introduction of infected cattle into an immunologically naive population.

**Keywords** East coast fever · Tarime zebu · Tick species · Tolerance

### Introduction

In Tanzania, about 80 % of the total cattle herds are at risk of being infected with tick-borne diseases (TBDs) annually, and the direct economic losses are estimated at US\$ 248 million with mortality rate estimated at 920,000 animals/year (Kivaria 2006). East Coast fever (ECF) is one of these diseases and causes substantial losses in cattle and therefore is a socio-economic threat to the development of the livestock sector (Mbassa et al. 1994; Swai et al. 2007; Chenyambuga et al.

E. L. K. Laisser  
Inspectorate Department, Ministry of Education and Vocational Training, Eastern Zone, P.O. Box 325, Morogoro, Tanzania

M. J. Kipanyula  
Department of Veterinary Anatomy, Faculty of Veterinary Medicine, Sokoine University of Agriculture (SUA), P. O. Box 3016, Chuo Kikuu, Morogoro, Tanzania

E. L. K. Laisser (✉) · G. Msalya · S. W. Chenyambuga  
Department of Animal Science and Production, SUA, P. O. Box 3004, Chuo Kikuu, Morogoro, Tanzania  
e-mail: emalaisser@gmail.com

E. D. Mwega  
Department of Microbiology and Parasitology Faculty of Veterinary Medicine, SUA, P. O. Box 3019, Chuo Kikuu, Morogoro, Tanzania

R. H. Mdegela · E. D. Karimuribo  
Department of Veterinary Medicine and Public Health, SUA, P.O. Box 3021, Chuo Kikuu, Morogoro, Tanzania

L. Kusiluka  
Nelson Mandela Institute of Science and Technology, P.O. Box 447, Arusha, Tanzania

A. J. Mwilawa  
Tanzania Livestock Research Institute Mabuki, P. O. Box 352, Mwanza, Tanzania

2008). In 2006/7, the government subsidized the acaricides in order to enable farmers overcome the disease challenges and reduce mortalities caused by TBDs (PMO-RALG 2009). Despite government subsidies, acaricides are still expensive and, therefore, many livestock keepers are unable to dip or spray frequently or routinely (Mugisha et al. 2005; Kivaria 2006).

In Mara region and areas around Lake Victoria, livestock keepers believe that Tarime zebu can tolerate ticks and ECF. Following the belief, these livestock keepers do not frequently dip their animals (Chenyambuga et al. 2008). Tarime zebu is one of the many strains of Tanzania shorthorn zebu (TSHZ) population in Tanzania. It is the most predominant TSHZ strain in all districts of Mara region and it is preferred to other zebu strains. In fact, Tarime zebu has spread and is being bred in many parts of Tanzania particularly in the west (Rukwa region) and southern highlands (Mbeya region). However, there is no documented information on the tolerance of Tarime zebu to TBDs. This study was carried out to evaluate the tick burdens as well as the extent of ECF infection in Tarime zebu, in order to study their relationship with the tolerance of Tarime zebu against tick infestation and ECF infection.

## Materials and methods

### Study sites and research design

This study was carried out in the districts of Tarime and Serengeti in Mara region located in the lake zone of Tanzania. Selection of these districts was purposely based on a large population of Tarime zebu. Rainfall pattern in both districts is bimodal comprising short rains between September and December and the long rains between March and May or June.

The study involved six wards from Tarime and Serengeti districts namely Matongo, Komaso, Kibasuka, Kebanjanje, Rung'abure and Kisaka. Two villages were purposely selected from each ward making a total of 12 villages for both districts. In each village, 10 households (120 households in total) were randomly selected using random numbers from the list of all households keeping more than 10 Tarime zebu. From these households, a total of 360 animals (three per household, i.e. one calf, one weaner and one adult) were selected for tick identification and counting as well as blood sampling. The desired sample size for the study was calculated according to the procedure described by Thrusfield (1995), and the animals were selected based on no evidence of admixture with other strains of zebu.

### Tick identification and counts

Tick counts were done according to Londt et al. (1979), counting ticks at predilection sites. The predilection sites were the head, sternum and hind quarters (Baker and Ducasse 1967). Due to limited resources and time, visible adult ticks were counted from one side of the animal body and identified using the keys of Mathysse and Colbo (1987). The half-body counts were doubled to estimate the number of ticks for the whole body. The ticks were identified to genus level and recorded for each animal examined; animal category, tick attachment sites, household head, village, ward and district were also recorded.

### Blood sampling, genomic DNA extraction and detection of *Theileria parva*

Whole blood samples were collected by jugular vein puncture using Vacutainer tubes with EDTA. The samples were labelled and stored in a cool box with ice packs while in the field and later put into a refrigerator until when they were transferred to the laboratory in the Department of Microbiology and Parasitology at SUA for further analyses.

Genomic DNA was extracted from 354 whole blood samples using the Puregene Blood Core Kit (Qiagen, Minnesota, USA) according to the manufacturer's instructions (six samples clotted before DNA extraction and they were therefore omitted). The nested p104 PCR was used to screen all field samples for the presence of *T. parva*. Primers derived from the *T. parva*-specific 104-kDa antigen (p104) gene were used in the PCR amplification as previously described by Odongo et al. (2010) and Iams et al. (1990). The sequences of the forward and reverse primers were 5'ATT TAA GGA ACC TGA CGT GAC TGC 3' and 5' TAA GAT GCC GAC TAT TAA TGA CAC C 3', respectively, for first round and 5' GGC CAA GGT CTC CTT CAG AAT ACG3' and 5'TGG GTG TGT TTC CTC GTC ATC TGC 3', respectively, for the second round. The nested polymerase chain reaction (nPCR) amplifications were performed in a total volume of 20  $\mu$ l containing 14  $\mu$ l nuclease-free water, 0.5  $\mu$ l (10 pmol) of each of forward and reverse primers and 5  $\mu$ l of genomic DNA (20 ng/ $\mu$ l) template added into the lyophilized pellet (Bioneer PCR Premix—Korea), followed by vortexing and brief spin down to dissolve the pellet. For the second round, the amount of water was 18.5  $\mu$ l, and 0.5  $\mu$ l of the primary PCR product was used as a template. Reaction conditions for the primary PCR included initial denaturation at 94 °C for 5 min, denaturation at 94 °C for 60 s, annealing at 60 °C for 60 s and extension at 72 °C for 60 s, and the amplification was done in 30 cycles. The cycling profile condition for the second PCR was the same as the primary amplification, except for the annealing temperature which was 50 °C. The nPCR reactions were carried out in a thermocycler (Takara Bio Inc., Japan).

The nPCR products were separated on 1.5 % agarose gel and visualized in an ultraviolet (UV) trans-illuminator.

#### Data analysis

The data obtained from tick count and PCR were coded and analysed using SPSS version 16 (SPSS 2008). The percentage of animals infested with different tick species and the prevalence of *T. parva* in animals were compared using a chi-square to test the significance of the differences in tick infestation and prevalence of *T. parva* between villages, wards and districts. Analysis of variance was used to assess the statistical significance differences in tick counts between wards and between districts. The fixed effects assessed were district, ward within district, animal category and attachment site. All results were considered significant at  $p \leq 0.05$ .

## Results

### Tick species and abundance in Serengeti and Tarime districts

Four genera of ticks were identified from a total of 360 animals. The genera recorded were *Rhipicephalus* (71.8 %), *Amblyomma* (14.1 %), *Boophilus* sub-genus of *Rhipicephalus* genus (14.0 %) and *Hyalomma* (0.1 %). Three of these (*Rhipicephalus*, *Amblyomma* and *Boophilus* sub-genus of *Rhipicephalus* genus) were found in both districts whereas *Hyalomma* was found only in Tarime district. The most abundant and widely distributed ticks in both districts belonged to *Rhipicephalus*, followed by *Amblyomma* and *Boophilus* sub-genus of *Rhipicephalus* genus as shown in Table 1. With an exception to *Amblyomma*, the distribution of all other tick species differed significantly ( $p \leq 0.05$ ) between the two districts, with Tarime district having the highest counts for each species. Of the examined animals in Serengeti and Tarime, 61.7 and 96.1 %, respectively, were found to be infested by ticks. The proportion of animals infested with ticks differed significantly ( $p \leq 0.05$ ) between districts.

**Table 1** Tick burden in Tarime cattle examined from Serengeti and Tarime districts

District	Parameter	<i>Rhipicephalus</i>	<i>Amblyomma</i>	<i>Boophilus</i>	<i>Hyalomma</i>	<i>p</i> value
Serengeti	Tick count (mean±SE)	32.6±3.7 <sup>a</sup>	15.8±1.6 <sup>b</sup>	9.8±2.4 <sup>b</sup>	0.0	0.00
	% of total ticks	42.8	45.6	25	0.0	
Tarime	Tick count (mean±SE)	89.5±6.3 <sup>a</sup>	20.7±2.7 <sup>b</sup>	30.3±5.9 <sup>b</sup>	4.7±1.5	0.00
	% of total ticks	95.0	60.0	52.2	3.3	
Overall	Tick count (mean±SE)	71.8±4.8 <sup>a</sup>	18.6±1.7 <sup>b</sup>	23.7±4.1 <sup>b</sup>	4.7±1.5	0.014
	% of total ticks	68.9	52.8	38.6	1.7	
<i>p</i> value		0.00	0.151	0.00	NA	

Means bearing different superscripts across rows are significantly different ( $p < 0.05$ )

### Ticks infestation

The average number of ticks per animal and the proportion of animals infested with ticks according to animal category, attachment site, ward and district are shown in Table 2. Among the attachment sites, the head had the highest tick count. There was a significant difference ( $p \leq 0.05$ ) in tick burden among the different animal categories, attachment sites, wards and between districts. With regard to animal category, calves showed low tick burden (68.3±8.8 ticks per animal) compared to weaners and adults. Wards which had the highest number of animals infested with ticks were Kisaka in Serengeti (91.7 %) and Matongo (100 %) in Tarime. There were significantly more animals ( $p < 0.05$ ) infested with ticks in Tarime district (96.1 %) than in Serengeti (61.7 %). Similarly, animals in Tarime district had higher tick count per animal (117.9±8.9) than those in Serengeti district (38.3±3.8).

### Prevalence of *T. parva* in Tarime cattle

The overall prevalence of *T. parva* in Tarime cattle was 27.7 % (Table 3). It is shown here that the prevalence of *T. parva* in cattle blood was significantly ( $p \leq 0.05$ ) higher in Serengeti district (38.3 %) than in Tarime district (16.7 %). The prevalence of *T. parva* infection in different animal categories was not significantly ( $p > 0.05$ ) different. There were no significant ( $p > 0.05$ ) differences in terms of the prevalence of *T. parva* among wards of Tarime district, and in most wards, the prevalence was less than 30 %. However, a significant ( $p < 0.05$ ) difference in *T. parva* infection was observed among the wards of Serengeti district. The highest number of animals that tested positive for *T. parva* infection was found in Rung'abure ward while the lowest was found in Kisaka.

## Discussion

The main focus of this study was to establish the tick burden and the prevalence of *T. parva*, the causative agent of ECF, in

**Table 2** Factors influencing tick burden in Serengeti and Tarime districts

Factors	Level	Tick count (mean±SE)	% of animals infested	<i>p</i> value		
1. Category	Young	68.3±8.8 <sup>a</sup>	77.5	0.007		
	Weaner	88.0±11.1 <sup>b</sup>	80.0			
	Adult	103.1±11.2 <sup>b</sup>	79.1			
2. Attachment site	Head	66.7±1.5 <sup>a</sup>	68.1	0.000		
	Sternum	16.0±1.6 <sup>b</sup>	51.9			
	Hind quarter	23.3±1.9 <sup>b</sup>	63.3			
3. Ward	Serengeti	Kebanjebanje	17.0±2.7 <sup>b</sup>	75.0	0.000	
		Kisaka	62.1±5.8 <sup>a</sup>	91.7		
		Rung'abure	5.8±2.3 <sup>b</sup>	18.7		
	Tarime	Kibasuka	132.1±16.0 <sup>b</sup>	93.3		0.016
		Komaso	81.8±10.5 <sup>a</sup>	95.0		
		Matongo	139.1±17.8 <sup>b</sup>	100.0		
4. District	Serengeti	38.3±3.8	61.7	0.00		
	Tarime	117.9±8.9	96.1			

Means bearing different superscripts across column are significantly different ( $p < 0.05$ )

clinically healthy Tarime cattle zebu. Tick genera observed in this study conformed to those reported by Chenyambuga et al. (2008) in other wards of Tarime district. In both districts, *Rhipicephalus* was the most prevalent tick genus infesting Tarime cattle. Knowledge of tick species available in a certain area is very important in predicting the occurrence of specific TBDs in such an area and thus helps in planning proper diseases control programme.

In this study, calves had the smallest tick counts compared to weaners and adults due to the nature of calf rearing systems. In Serengeti and Tarime districts, calves are kept around homestead separately from adult animals, this reduces the risk of tick infestation because of the limited exposure. Adult animals are continually grazed in natural pastures in communal lands throughout the year and thus are more prone to tick infestation. Our observation concurs with the findings obtained by Kivaria et al. (2012) in the pastoral community of Southern Sudan where calves and other young animals are left to graze near the homestead. However, our findings are contrary to the findings obtained by Mwambene et al. (2012). In their study, they found that in Fipa communities, calves and adult animals are grazed together, hence, both are exposed to the same tick infestation risk.

High tick burden was observed in Tarime compared to Serengeti; this is attributed to the existence of different tick control systems in the two districts. A strictly community-managed dipping practice has been instituted in Serengeti district and this has reduced significantly the level of tick infestation in Serengeti compared to Tarime district. Also, ecologically, Tarime district is more humid and receives more rainfall than Serengeti district; these climatic conditions are more favourable for tick growth and multiplication. These findings are consistent with previous reports by Mathee et al. (1997) who found that ecological

differences, grazing system, extent and frequency of acaricide usage had large influenced on tick counts in any ecological zone. Tarime district, therefore, needs to establish strict tick control programme, but it should not exceed the endemic stability. Any control programme should aim at providing sufficient tick control to increase cattle productivity while at the same time not reducing tick numbers to the extent that endemic stability is adversely affected.

The prevalence of *T. parva* infection observed in this study is almost similar to that observed by Gachohi et al. (2012) in pastoral herds in Kenya and Marcellino et al. (2012) for pastoral livestock keepers in Southern Sudan. However, our findings disagree with the previous results reported in different wards of Tarime district (Chenyambuga et al. 2008). The difference observed is due to variation in vector densities from year-to-year due to changes in climatic conditions, socioeconomic activities, seasons and management practices such as dipping practices. The observed high prevalence of *T. parva* in cattle of Serengeti district compared to those of Tarime district is in agreement with the findings by Kivaria et al. (2012) who reported that regular dipping reduces vector intensity which in turn reduces the bovine immune stability. Another reason is that cattle in Serengeti district graze in areas bordering the Serengeti National Park during the dry season due to shortages of pastures and water in the common communal grazing lands. Most areas in the parks are ECF-endemic zones due to the abundance of *Roridomyces appendiculatus*, particularly during the end of the wet season (Marcellino et al. 2012). Thus, cattle populations in Serengeti district seem to easily pick up the *T. parva* parasites when grazing in the national park where there are plenty of buffaloes which are good carrier of the protozoan (Marcellino et al. 2012).

Our observations of cattle samples revealed that all animals that tested positive for *T. parva* did not show any signs of

**Table 3** Factors influencing/ associated with *T. parva* infection (percentage of animals infected in each category, ward and district)

Factor	Level	% of animals infected		Chi-square	df	p value
		Negative	Positive			
1. Category	Young	72.9	27.1	2.145	2	0.343
	Weaner	76.3	23.2			
	Adult	67.8	32.2			
2. Wards	Serengeti	Kebanjanje	60.0	4.371	2	0.112
		Kisaka	71.7			
		Rung'abure	53.3			
	Tarime	Kibasuka	95.0	9.693	2	0.008*
		Komaso	74.1			
		Matongo	80.0			
3. District	Serengeti	61.7	38.3	20.746	1	0.000*
	Tarime	83.3				
Overall prevalence		72.3	27.7			

\*  $p < 0.05$  (significantly different at this level)

illness, indicating being infected with *T. parva* but remained healthy and thus are potential carriers. Furthermore, our study has demonstrated that animals having high tick burden do not necessarily become infected with *T. parva*, the parasite that causes ECF. This is because some ticks do not harbour or do not carry the protozoan parasites causing ECF. Generally, our findings on tick burden and *T. parva* prevalence in Tarime zebu concurs with the farmers' belief that Tarime cattle can tolerate ECF infection and may, therefore, serve as carriers of *T. parva* and other hemoparasites (Ngowi et al. 2008; Chenyambuga et al. 2008). This is because high tick infestation and *T. parva* infection were found in Tarime cattle, but none of the animals examined showed either signs of ill-health as a result of tick infestation or clinical signs of ECF despite the fact that the DNA of *T. parva* was detected in 27.7 % of the animals sampled. We can hypothesize that the Tarime zebu can be infected with *T. parva* but cannot develop signs of ECF; hence, they may become a source of infection to other less-tolerant ecotypes of indigenous cattle in mixed herds.

Since Tarime cattle are preferred by most farmers because of their perceived resistance to ticks and ECF, community conservation programmes for the ecotype should be promoted. Studies elsewhere have shown that indigenous cattle are tolerant to ticks and other vector-borne diseases and they perform relatively better than exotic breeds under low-input conditions, climatic stresses and diseases outbreaks, especially during times of drought (Rege and Tawah 1999). Marufu (2008) observed that the Nguni cattle are more tolerant to ticks and TBDs than nondescript cattle in the traditional sector in South Africa and that communal farmers keeping Nguni cattle did not require regular treatment with costly veterinary pharmaceuticals for tick and TBD control. A similar scenario may apply in Tarime zebu cattle; this provides opportunity for exploiting the genetic potential of Tarime cattle for tolerance

to TBDs. This may be beneficial for the sustainability of the livelihoods of pastoral and agro-pastoral communities, especially now that climate change and variability has frustrated livestock production in many countries in the world, necessitating adoption of more climate and disease-resilient breeds.

**Acknowledgments** We acknowledge the generous financial support from the Norwegian Agency for International Development (NORAD) through the programme for Enhancing Pro-poor Innovation in Natural Resources and Agricultural Value Chains (EPINAV) at Sokoine University of Agriculture. We also would like to thank the district veterinary and livestock officers as well as the village extension officers in these districts for their assistance during field work. We thank the livestock farmers for allowing us to use their animals for the experiments.

**Conflict of interest** The authors declare that they have no conflict of interest.

## References

- Baker, M.K. and Ducasse, B.W., 1967. Tick infestation in Natal 1. The predilection sites and seasonal variations of cattle ticks, *Journal of the South African Veterinary Medical Association*, 33, 447–453.
- Chenyambuga, S.W., Waiswa, C., Saimo, M., Ngumi, P. and Gwakisa, P.S., 2008. Knowledge and perceptions of traditional livestock keepers on tick-borne diseases and sero-prevalence of *Theileria parva* around Lake Victoria Basin, *Livestock Research for Rural Development*, Volume 22 Article No. 7. Retrieved July 25, 2012, from <http://www.lrrd.org/Newfolder/4/chen22135.htm>
- Gachohi, J., Skilton, R., Hansen, F., Ngumi, P. and Kitala, P., 2012. Epidemiology of East Coast fever (*Theileria parva* infection) in Kenya, past, present and the future, *Parasites and Vectors*, 2012, 5: 194 DOI: 10.1186/1756-3305-5-194.
- Iams, K.P., Young, J.R., Nene, V., Desai, J., Webster, P., ole-Moiyoi, O.K. and Musoke, A.J., 1990. Characterisation of the gene encoding a



- 104-kilodalton microneme-rhoptry protein of *Theileria parva*, *Mol Biochem Parasitology*, 39, 47–60.
- Kivaria, F.M., 2006. Estimated direct costs associated with tick-borne diseases on cattle in Tanzania, *Tropical Animal Health and Production*, 38, 291–299.
- Kivaria, F.M., Kapaga, A.M., Mbassa, G.K., Mtui, P.F. and Wani, R.J., 2012. Epidemiological perspectives of ticks and tick-borne diseases in South Sudan, Cross-sectional survey results, Retrieved 1st January, 2014, from <http://www.ojvr.org/index.php/ojvr/article/viewFile/400/693>
- Londt, J.G.H., Horak, I.G. and de Villiers, I.L., 1979. Parasite of domestic and wild animal in South Africa, XIII, The seasonal incidence of adult ticks (Acarina: Ixodidae) on cattle in the northern Transvaal, *Onderpoort Journal of Veterinary Research*, 46, 31–39.
- Marcellino, W.L., Salih, D.A., Julla, I.I. and El Hussein, A.R.M., 2012. Seroprevalence of East Coast fever in Central Equatorial State, South Sudan, *Veterinaria Italiana*, 48(4), 379–385.
- Marufu, M.C., 2008. Prevalence of ticks and tick borne diseases in cattle on communal rangelands in the highland areas of the Eastern Cape Province, South Africa, MSc. dissertation, University of Fort Hare.
- Mathee, S., Meltzer, D.G.A. and Horak, I.G., 1997. Sites of attachment and density assessment of ixodid ticks (Acari: Ixodidae) on impala (*Aepyceros melampus*), *Exp Appl. Acarol*, 21, 179–192.
- Mathysse, J.G. and Colbo, M.H., 1987. The Ixodid Ticks of Uganda, Entomological Society of America, Collage Park, Maryland, USA.
- Mbassa, G.K., Balemba, O., Maselle, R.M. and Mwaga, N.V., 1994. Severe anaemia due to haematopoietic precursor cell destruction in field cases of East Coast fever in Tanzania, *Veterinary Parasitology*, 52, 243–256.
- Mugisha, A., McLeod, A., Percy, R. and Kyewalabye, E., 2005. Strategies, effectiveness and rationale of vector-borne disease control in the pastoralist system of south-west Uganda, *Tropical Animal Health and Production*, 37, 479–489.
- Mwambene, P.L., Katule, A.M. and Chenyambuga, S.W., 2012. Fipa cattle in the south western highlands of Tanzania, socio-economic roles, traditional management practices and production constraints, *Animal Genetics Resources*, 6, 1–12.
- Ngowi, E.E., Chenyambuga, S.W. and Gwakisa, P.S., 2008. Socio-economic values and traditional management practices of Tarime zebu cattle in Tanzania, *Livestock Research for Rural Development*, 20 (6). <http://www.lrrd.org/lrrd20/6/ngow20094.htm>. Accessed on 29/11/2013.
- Odongo, D.O., Sunter, J.D., Kiara, H.K., Skilton, R.A. and Bishop, R.P., 2010. A nested PCR assay exhibits enhanced sensitivity for detection of *Theileria parva* infections in bovine blood samples from carrier animals. *Parasitology Research* 106 (2) 357–65.
- PMO - RALG (Prime Minister's Office, Regional Administration and Local Government), 2009. An overview: Region Livestock Production status in the Country, Department of Animal Production, Dodoma, Tanzania, 84–87
- Rege, J.E.O. and Tawah, C.L., 1999. The state of African cattle genetic resources II, Geographical distribution, characteristics and uses of present-day breeds and strains. *Animal Genetic Resources Information*, 26, 1–25.
- SPSS (Statistical Packages for Social Science), 2008. SPSS for Windows, Release 16.0, User Manual, SPSS Inc. Chicago, USA.
- Swai, E.S., Karimuribo, E.D., Kambarage, D.M., Moshy, W.E. and Mbise, A.N., 2007. A comparison of seroprevalence and risk factors for *Theileria parva* and *Theileria mutans* in smallholder dairy cattle in the Tanga and Iringa regions of Tanzania, *The Veterinary Journal*, 174, 390–396.
- Thrusfield, M., 1995. *Veterinary Epidemiology*, 2nd edition, Blackwell Science Ltd, Oxford, UK.

## CHAPTER FOUR

### 4.0 PAPER III

**Tick burden and acquisition of immunity to *Theileria parva* by Tarime cattle in comparison to Sukuma cattle under different tick control regimes in the lake zone of Tanzania**

**E. L. K. LAISSER**

Ministry of Education and Vocational Training, Inspectorate Department Eastern zone,  
P.O. Box 325, Morogoro, Tanzania

**S. W. Chenyambuga and G. Msalya**

Department of Animal Science and Production, Sokoine University of Agriculture (SUA),  
P.O. Box 3004, Morogoro, Tanzania

**M. J. Kipanyula**

Department of Veterinary Anatomy, SUA, P.O. Box 3016, Morogoro, Tanzania

**R. H. Mdegela and E. D. Karimuribo**

Department of Veterinary Medicine and Public Health, SUA, P.O. Box 3021, Morogoro,  
Tanzania

**A. J. Mwilawa**

Tanzania Livestock Research Institute, Mabuki, P.O. Box 352, Mwanza, Tanzania

**L. J. M. Kusiluka**

Nelson Mandela African Institute of Science and Technology, P.O. Box 447, Arusha  
Tanzania.

**P. S. Gwakisa**

Genome Sciences Centre, Faculty of Veterinary Medicine, SUA, P. O. Box 3016,  
Morogoro Tanzania

Published in: *Journal of Veterinary Medicine and Animal Health* 8(3).pp.21-28 March,

2016. Available on line at: <http://www.academicjournals.org/JVMAH>

Full Length Research Paper

## Tick burden and acquisition of immunity to *Theileria parva* by Tarime cattle in comparison to Sukuma cattle under different tick control regimes in the Lake Zone of Tanzania

E. L. K. Laisser<sup>1,2\*</sup>, S. W. Chenyambuga<sup>3</sup>, E. D. Karimuribo<sup>4</sup>, G. Msalya<sup>3</sup>, M. J. Kipanyula<sup>5</sup>, A. J. Mwilawa<sup>8</sup>, R. H. Mdegela<sup>4</sup>, L. J. M. Kusiluka<sup>7</sup> and P. S. Gwakisa<sup>6</sup>

<sup>1</sup>Department of Animal Science and Production, Sokoine University of Agriculture (SUA), P. O. Box 3004, Chuo Kikuu Morogoro, Tanzania.

<sup>2</sup>Ministry of Education and Vocational Training, Inspectorate Department, Eastern Zone, P.O. Box 325, Morogoro, Tanzania.

<sup>3</sup>Department of Animal Science and Production, SUA, P. O. Box 3004, Chuo Kikuu Morogoro, Tanzania.

<sup>4</sup>Department of Veterinary Medicine and Public Health, SUA, P. O. Box 3021, Chuo Kikuu Morogoro, Tanzania

<sup>5</sup>Department of Veterinary Anatomy, SUA, P. O. Box 3016, Chuo Kikuu Morogoro, Tanzania.

<sup>6</sup>Genome Science Centre, SUA, P. O. Box 3016, Chuo Kikuu Morogoro, Tanzania.

<sup>7</sup>Nelson Mandela Institute of Science and Technology, P. O. Box 447, Arusha, Tanzania.

<sup>8</sup>Tanzania Livestock Research Institute Mabuki, P. O. Box 352, Mwanza, Tanzania.

Received 23 November, 2015; Accepted 28 January, 2016

This study was conducted to determine tick burden and immunological parameters of resistance to East Coast fever (ECF) in Tarime and Sukuma cattle. Tick load, packed cell volume (PCV), *Theileria parva* (*T. parva*) specific antibody percent positivity (PP), and prevalence of *T. parva* parasites were studied in relation to dipping regime, strains, and season. A total of 50 experimental cattle were included in this study. Tick load was determined by whole body counts, antibody percent positivity was determined by the polymorphic immunodominant molecule (PIM)-based *T. parva* enzyme-linked immunosorbent assay (ELISA), and prevalence of *T. parva* parasites was detected by a nested polymerase chain reaction (PCR) based on the p104 gene. Dipping frequency on tick burden showed no statistically significant differences when cattle of either strain were dipped either once every 2 or 3 weeks in the dry and wet seasons. However, Tarime cattle had higher ( $p < 0.05$ ) tick count than Sukuma cattle and non dipped groups maintained high tick infestation throughout the experimental period. The PCV values were within the physiological range, although this parameter was lower in Tarime cattle ( $p < 0.05$ ). All cattle regardless of strain were seropositive, although Tarime cattle maintained higher PP compared to Sukuma by 15%. Conversely, the prevalence of *T. parva* parasites was lower in Tarime (38%) compared to Sukuma cattle (38.5%), but the difference was not significant ( $p > 0.05$ ). During the study period, 20% (5/25) of Sukuma cattle contracted ECF, but none of the Tarime cattle showed clinical signs for the disease. The differences between the two strains shown in terms of PP and *T. parva* parasite prevalence may indicate the ability of individual cattle to resist tick infestation and ECF infection under natural challenge. Higher antibody levels but lower parasite prevalence attained by Tarime cattle, suggests inherent ability of Tarime cattle to resist clinical development of ECF infection, but to remain as *T. parva* carriers.

**Key words:** Carrier state, *Theileria parva*, ticks, seropositivity.

## INTRODUCTION

Tanzania is endowed with valuable indigenous strains of cattle (Das and Mkonyi, 2003). These livestock resources, apart from offering direct food products like meat and milk, also provide draught animal power as labor saving technologies; manure for fertilizing crop fields and biogas for electrification or cooking fuel which has a potential for reducing deforestation (MLFD, 2015). About 80% of the indigenous cattle strains in Tanzania are exposed to vector-borne infections, among which is East Coast fever (ECF) which is a major killer disease (Kivaria, 2006) causing substantial losses in terms of morbidity in adult cattle of improved breeds and calf mortality, and therefore, hinders development of the livestock sector (Swai et al., 2007; Chenyambuga et al., 2008). Control strategies for ECF are based on the use of acaricides to control the vector ticks, chemotherapy of sick animals as well as immunization of cattle by the infection and treatment method (ITM) (Norval et al., 1992; Musoke et al., 2004; Oura et al., 2004). Acaricide use and chemotherapy are often limited by high costs, development of resistance by the vector ticks, and the parasites as well as environmental impacts (Mugisha et al., 2005; Kivaria, 2006; deCastro, 1997; George et al., 2004; Ministry of Water and Livestock Development, 2004). On the other hand, ITM offers a valuable alternative for ECF control (Oura et al., 2004); however, its widespread application has faced many challenges. These include the requirement of cold chain mode of delivery to remote areas and high cost of the vaccine (up to US\$10 per animal), which is unaffordable to most smallholder herders (Di Giulio et al., 2009). Furthermore, ITM does not completely eliminate the need for acaricide application due to the potential existence of other tick-borne diseases.

Indigenous strains of cattle found in ECF endemic areas around the Lake zone of Tanzania (that is, areas around Lake Victoria), such as the Tarime cattle are reported to be more tolerant to ECF than exotic cattle and other zebu in the same region (Paling et al., 1991; Chenyambuga et al., 2008). This is probably due to natural selection, because of the long-time exposure to the disease in the region. However, much of available evidence is based on anecdotal information regarding tolerance of Tarime cattle to ECF (Chenyambuga et al., 2008).

The aim of present study was to assess tick burden and immunological parameters of resistance to ECF in Tarime in comparison to Sukuma cattle found in the same zone. Cattle from the two strains were subjected to

acaricide application using two different frequencies, either once every 2 or 3 weeks. The findings from this study will make it possible to make strong recommendation about the potential of indigenous strains for rational utilization in ECF endemic areas.

## MATERIALS AND METHODS

### Study area

This study was conducted at Tanzania Livestock Research Institute (TALIRI), Mabuki centre in Mwanza region, Lake Zone of Tanzania. The centre is located between latitudes 2° 58' 84" South and longitudes 33° 58' 12" East at an altitude of 1174 m above sea level. Temperatures at the centre range between 25 and 35°C and rainfall ranges from 600 to 800 mm per annum. The rainfall pattern is bimodal, with short rains starting in November and ending in February and long rains starting in mid March and ending in May.

### Study design and animals

A total of fifty cattle (25 Tarime and 25 Sukuma), aged 9 to 12 months were randomly selected from a cohort of 110 cattle, which were previously purchased from farmers around the Lake Zone of Tanzania, where the animals have been kept for many years under smallholder management systems with poor tick control practices. Farmers around the Lake Zone believe that the Tarime and Sukuma strains possess resistance to tick infestation and/or ECF infection. The original cohort of 110 cattle had been kept at Mabuki Research centre in Mwanza, Tanzania for a yearlong monitoring of tick-borne diseases, during which time the cattle were kept under similar management conditions including weekly dipping. At the onset of this study, cattle from each type, shown to be free of ECF (by absence of blood piroplasms) were divided into groups of eight, eight, and nine. The cattle were individually identified by different colored ear tags and allocated to experimental groups, which were distinguished by different dipping regimes. Cattle in group 1 were dipped once after two weeks while those in group 2 were dipped once every three weeks. The third group, comprising 9 cattle served as control group without dipping throughout the study period. Dipping was done using alphacypermethrin (Dominex®) with an initial dip filling of 1 L of Dominex® for 2000 L of water, and dip replenishing by adding 1 L of Dominex® for 1250 L of water. The experiment was conducted during the dry season (mid-August to mid-November 2014) and the wet season (mid-November 2014 to mid-February 2015).

The three cattle groups were grazed together and monitored throughout the study period for tick counts and any ECF clinical signs (fever; that is body temperature above 39.5°C for more than 3 consecutive days; swelling of parotid and prescapular lymph nodes; presence of a macroschizont index  $\geq 5\%$  on collected smears and acute respiratory distress). Any diseased animal was promptly treated using buparvaquone (2.5 mg/kg) and all animal biodata was recorded on field sheets.

\*Corresponding author. E-mail: emalaisser@gmail.com.

### Sampling

Whole body tick counts were done once every week just before dipping. Only adult ticks were counted and identified to genus level *in situ*. Once every three weeks blood samples were collected by jugular vein-puncture into plain vacutainer tubes for serology and into EDTA-containing vacutainer tubes for whole blood (Poly Medicure Ltd, Faridabad, India) (for packed cell volume [PCV] and DNA extraction). A total of 400 blood samples were, therefore, collected during 6 months in 8 sampling periods at three week intervals. The blood samples were transiently stored in cool boxes containing ice packs and then transferred to Tanzania Veterinary Investigation and Laboratory Agency (TVLA) in Mwanza for initial processing (PCV and serum extraction) and then transferred to the Faculty of Veterinary Medicine laboratories at Sokoine University of Agriculture, Morogoro for further analyses.

### Tick identification and counts

Tick counts were done according to Londt et al. (1979). Visible adult ticks were counted from whole animal body and identified using the keys of Mathysse and Colbo (1987). The ticks were identified to genus level and recorded for each animal in relation to frequency of dipping season and strain.

### Genomic DNA extraction and detection of *Theileria parva*

Genomic DNA was extracted from 400 whole blood samples using the Pure Gene Blood Core (QIAGEN) Kit (Minnesota, USA) according to the manufacturer's instructions. The nested p104 polymerase chain reaction (nPCR) was used to screen all field samples for the presence of *T. parva*. Primers derived from the *T. parva*-specific 104-KDa antigen (p104) gene were used in the PCR amplification as previously described by Odongo et al. (2010) and Iams et al. (1990). The sequences of the forward and reverse primers were 5'ATT TAA GGA ACC TGA CGT GAC TGC 3' and 5' TAA GAT GCC GAC TAT TAA TGA CAC C 3', respectively, for first the round and 5' GGC CAA GGT CTC CTT CAG AAT ACG 3' and 5'TGG GTG TGT TTC CTC GTC ATC TGC 3', respectively, for second the round. The nPCR amplifications were performed in a total volume of 20 µl containing 14 µl nuclease-free water, 0.5 µl (10 pmol) of each of forward and reverse primers and 5 µl of genomic DNA (20 ng/µl) template added into the lyophilized pellet (Bioneer PCR Pre-Mix - Korea), followed by vortexing and brief spin down to dissolve the pellet. Reaction conditions for the primary PCR included initial denaturation at 94°C for 5 min, denaturation at 94°C for 60 s, annealing at 60°C for 60 s and extension at 72°C for 60 s and the amplification was done in 30 cycles. For a second round, amount of water was 18.5 and 0.5 µl of the primary PCR product was used as a template. The cycling profile condition for the second PCR was the same as the primary amplification, except for the annealing temperature which was 50°C. The nPCR reactions were carried out in a thermocycler (TAKARA Bio Inc., Japan). The nPCR products were separated on 1.5% agarose gels and visualized on ultra violet (UV) trans-illuminator.

### Packed cell volume (PCV)

The PCV was determined using whole blood drawn from the jugular vein into EDTA-containing vacutainer tubes. Blood was drawn from the tubes using capillary tubes filled to ¾ of its length. One end of the tube was sealed with a crista seal and then placed into a micro-haematocrit centrifuge (ex UK with 9 cm rotor radius) for 5 min at

12,000 rpm (RCF; 14,489.28 g). Reading of the PCV was performed on the Micro-haematocrit Reader Scale. The PCV was determined from the reading expressed as percentage of packed red cells in the total volume of blood.

### Indirect ELISA for *T. parva* antibodies

The PIM-based enzyme-linked-immunosorbent assay (ELISA) described by Katende et al. (1998) was used to measure specific antibodies to *T. parva* (sensitivity > 99%, specificity 94 to 98%). Optical density (OD) of each sample was measured at 405 nm using an Erba Lisascan II ELISA reader (ERBA diagnostics, Mannheim GmbH, Germany). The OD readings were used to compute antibody percent positivity (PP) for each sample using the formula:

$$\%PP = \frac{\text{Mean OD of sample}}{\text{Mean OD of strong positive}} \times 100$$

The PP of 20% or higher was considered positive.

### Data analysis

The data obtained from tick count, PCV, ELISA and PCR were coded and analysed using the statistical package for social sciences (SPSS) research software version 16 (SPSS, 2008). The percent of tick species, PCV, PP, and the prevalence of *T. parva* were compared using a chi-square to test the significance of the differences in tick infestation and prevalence of *T. parva* between strains, dipping regimes, and seasons. Analysis of variance (ANOVA) was used to analyze the data on tick count to assess the statistical significance of differences. The fixed effects assessed were strain, dipping regime and season. All results were considered significant at  $p \leq 0.05$ .

## RESULTS

### Ticks infestation among Sukuma and Tarime cattle strains

Three tick genera, *Amblyomma* genus, *Boophilus* sub-genus of *Rhipicephalus* genus and other species of *Rhipicephalus* were identified in the study area (Tables 1 and 2). *Rhipicephalus* genus accounted for 68.2% of the total ticks whereas *Boophilus* sub-genus of *Rhipicephalus* genus and *Amblyomma* constituted 16.3 and 15.5%, respectively. Significant differences were observed between Tarime and Sukuma cattle in terms of tick counts ( $p < 0.05$ ). Tarime cattle had relatively higher ( $11.8 \pm 0.9$ ) number of ticks per animal compared to Sukuma cattle ( $7.3 \pm 0.9$ ). However, dipping frequency of once every 2 or 3 weeks did not reveal significant differences in tick burden in both strains in both seasons. As expected non-dipped cattle had the highest ( $14.7 \pm 1.1$ ) tick burden compared to cattle dipped at either intervals ( $p < 0.05$ ). When tick infestations on the two cattle strains were compared during between the seasons, higher tick

Table 1. Factors influencing tick burden in Sukuma and Tarime cattle.

Categories	Level	Whole body Tick count (Mean $\pm$ SE)	P-value
Dipping frequency	Dipping after 2 weeks	5.8 $\pm$ 1.2 <sup>b</sup>	0.0001
	Dipping after 3 weeks	8.1 $\pm$ 1.2 <sup>b</sup>	
	No dipping	14.7 $\pm$ 1.1 <sup>a</sup>	
Strain	Sukuma	7.3 $\pm$ 0.9 <sup>a</sup>	0.0013
	Tarime	11.8 $\pm$ 0.9 <sup>b</sup>	
Season	Dry season	9.1 $\pm$ 0.9 <sup>a</sup>	0.5368
	Wet season	11.9 $\pm$ 0.9 <sup>a</sup>	

<sup>a,b</sup>Means bearing different superscripts within column in each category are significant difference ( $p < 0.05$ ).

Table 2. Tick genera and confirmed ECF cases in Sukuma and Tarime cattle.

Strain	N	<i>Rhipicephalus</i> (%)	<i>Boophilus</i> (%)	<i>Amblyomma</i> (%)	ECF cases (%)
Sukuma	25	68.1	16.1	15.8	20
Tarime	25	68.3	16.5	15.2	0
Overall	50	68.2	16.3	15.5	10

Table 3. Percentage of *T. parva* PCR positive samples in Sukuma and Tarime cattle at different sampling periods.

Sampling period	1	2	3	4	5	6	7	8	Mean
Tarime PCR positive results (%; n=25)	24	32	36	40	40	44	44	44	38
Sukuma PCR positive results (%; n=25)	32	32	32	36	40	40	48	48	38.5
Overall PCR positive results (%; n=50)	28	32	34	38	40	42	46	46	38.25

counts were observed during the wet season but the difference between wet and dry seasons was not statistically significant ( $p > 0.05$ ).

#### Clinical ECF manifestation and PCV among Sukuma and Tarime cattle strains

During the entire experimental period, animals were monitored for clinical signs of ECF. Although no mortality was recorded, however, five animals of Sukuma cattle (20%) showed clinical signs of ECF infection as confirmed by microscopy of blood and lymph smears. All the ECF cases occurred in group 3 animals (Sukuma control group) during the wet season and the sick animals recovered after treatment with buparvaquone (2.5 mg/kg). No cattle from the Tarime strain suffered from ECF during the study period (Table 2).

Significant differences were also observed between Tarime and Sukuma cattle in terms of packed cell volume ( $p < 0.05$ ). Tarime cattle had relatively lower ( $29.9 \pm 0.2$ ) PCV mean per animal compared to Sukuma cattle ( $31.9$

$\pm 0.4$ ). However, dipping frequency either once every 2 or 3 weeks did not lead to significant differences in PCV means in the strains. When PCV means were compared between the seasons, higher PCV means were observed during the dry season and the difference between wet and dry seasons was significant ( $p < 0.05$ ) for both strains. Clinically sick animals (ECF) had lower PCV below their respective group means but their PCV level was within the physiological range of 24 to 48 (Table 4).

#### Prevalence of *T. parva* parasites among Sukuma and Tarime cattle strains

The prevalence of *T. parva* parasites was determined at 3-week intervals from mid August 2014 to mid February 2015, a period representing dry and wet seasons. *T. parva* prevalence was found to be variable over different sampling periods as well as between strains (Table 3). Thus, regardless of dipping regime, *T. parva* parasite prevalence was 24% at the beginning of the study (sampling period 1) and increased to 44% six

Table 4. Influence of strain, dipping regime and season on prevalence of *T. parva* parasites, antibody percentage positivity and packed cell volume in Sukuma and Tarime cattle.

Categories	Strain		P-value	Dipping regime		P-value	Season		P-value
	Sukuma	Tarime		Dipped	Not dipped		Dry	Wet	
	N=25	N=25		N=32	N=18		N=50	N=50	
ELISA (PP means)	30.3 ± 0.9 <sup>a</sup>	34.9 ± 1.1 <sup>b</sup>	0.000	32.3 ± 0.8	33.1 ± 1.1	0.594	32.8 ± 0.9	32.0 ± 0.3	0.749
<i>T. parva</i> PCR percent (%)	38.5 <sup>a</sup>	38 <sup>a</sup>	0.836	38 <sup>a</sup>	36 <sup>a</sup>	0.533	33 <sup>a</sup>	43.5 <sup>b</sup>	0.043
Packed Cell Volume (means)	31.9 ± 0.4 <sup>a</sup>	29.9 ± 0.2 <sup>b</sup>	0.0001	30.6 ± 0.2	30.9 ± 0.4	0.438	31.2 ± .3	30.0 ± 0.3	0.007

<sup>a,b</sup>Means bearing different superscripts within rows in each category are significantly different ( $p < 0.05$ ).

months later (sampling period 8) for Tarime cattle, whereas it was 32 and 48%, respectively for Sukuma cattle during the two sampling periods. Between the two strains, *T. parva* prevalence was 28 and 46% at the beginning and at the end of the study period, respectively. Mean prevalence for the entire study period was 38.2% in the study area. However, the difference in parasite prevalence between Tarime and Sukuma cattle strains was not statistically significant.

#### Prevalence of antibody percentage positivity in Sukuma and Tarime cattle strains

Levels of specific antibodies to *T. parva* detected in the Tarime and Sukuma cattle strains are shown in Table 4.

All cattle regardless of strain were positive for *T. parva* antibodies. Tarime cattle maintained significantly higher antibody percent positivity compared to Sukuma cattle by 15% ( $p < 0.05$ ). This was further demonstrated when cattle from the two strains were clustered into seropositivity categories (Figure 1). Thus, higher proportion of Sukuma strain cattle clustered to lower antibody PP (20 to 40) whereas most Tarime strain cattle fell into the

higher antibody cluster PP (41 to 60). None of the cattle displayed antibody PP above 60%. Figure 1 depicts the distribution of cattle by strain across seropositivity categories. Interestingly, only a few Sukuma cattle showed antibody PP above 41% whereas Tarime cattle were evenly distributed across the seropositivity categories.

#### DISCUSSION

This study confirms anecdotal information regarding tolerance of Tarime cattle to ECF as compared to Sukuma cattle kept in the same lake zone of Tanzania. This conclusion is based on three clear findings emanating from this study. Firstly, our study clearly indicated that Tarime cattle carried significantly higher tick burdens than Sukuma cattle. Most (> 68%) of the ticks found on the cattle of both strains were of *Rhipicephalus appendiculatus* species, vectors of *T. parva*, the causative agent of ECF. Furthermore, none of the Tarime cattle showed signs of clinical ECF whereas signs were evidenced in 20% of the Sukuma cattle. These findings provide the first testimony to hitherto farmers' assertions that Tarime cattle possess tolerance to both ticks and

clinical ECF. Farmers keeping Tarime cattle do not dip their cattle frequently; however, animals of this strain rarely show clinical ECF signs as compared to cattle of other strains communally grazing in the same area (Laisser et al., 2014). Ability of the Tarime cattle to carry more ticks and suffer less ECF may, therefore, be ascribed to an inherent feature of this strain of cattle, which has a small body size and seem to tolerate harsh local environmental conditions, including pressure from tick infestation. Our result on tick burdens and incidence of ECF in Tarime cattle concur with the findings by Taylor (2006), who reported a significant negative correlation between animal body weight and tick counts. Animals with an average body weight below 250 kg had 42% more ticks compared to animals with higher body weight.

Also the high tick infestation observed on non-dipped cattle agrees with the report by Mathee et al. (1997) who showed that regardless of breed, if ticks are not controlled, animals will always carry more ticks throughout the year and if the animals are not tolerant, there will be high mortality. However, the number of ticks per animal observed in this study differs from that observed by Laisser et al. (2014) in Serengeti and Tarime districts of

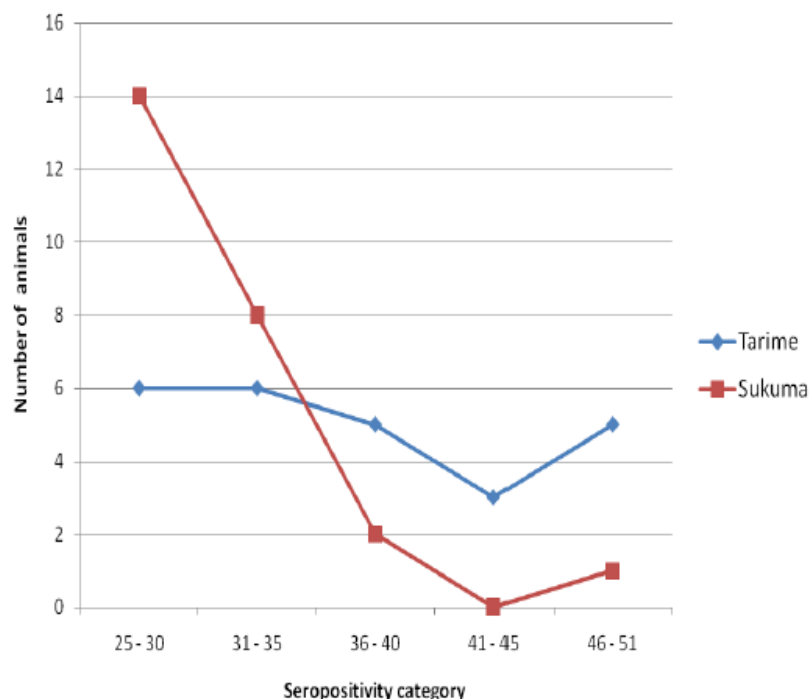


Figure 1. Comparison of cattle strains by antibody percentage positivity categories.

Mara region. The difference observed may be attributed by several factors, which include management practices and animal factors in these ecological areas. Generally, our findings demonstrate that animals which are adapted to a given environment usually carry fewer ticks as previously reported by Wambura et al. (1998).

Secondly, when we compared Tarime and Sukuma cattle in terms of prevalence of *T. parva* parasites, our study has revealed that Tarime cattle had slightly lower parasite prevalence, although the difference from Sukuma cattle was not statistically significant. These results agree with previous findings by Gachohi et al. (2012) and Marufu (2008) who reported that when different breeds of cattle are kept together in *T. parva* endemic area, less resistant cattle tend to acquire more parasites. Lower *T. parva* parasite prevalence observed in Tarime cattle may indicate a higher ability of these animals to clear *T. parva* parasites compared to more susceptible cattle breeds. Our results have further shown that parasitemia increased gradually in both strains from the beginning of the study (period 1) to the end of the study (period 8) by almost 150 to 180%. These data provide an indication of inherent *T. parva* carrier state of cattle of both strains and that the carrier state increased

incrementally throughout the study period. Our data also show that cattle of both strains picked up the infection gradually since they co-grazed on same pastures, however, it is interesting to point out that Tarime cattle did not develop clinical signs to the extent shown by Sukuma cattle. The Lake zone in Tanzania is an endemic area for ECF and as such it would be expected that cattle kept in this area are under constant exposure to the *T. parva* parasites. Zebu cattle usually acquire immunity to *T. parva* following recovery after primary ECF infection. It is also evidently reported that natural tick challenge incrementally boosts the immunity acquired by zebu cattle kept in endemic areas (Kazungu et al., 2015), therefore, resistant individuals or breeds are likely to attain higher immunity compared to susceptible breeds. Our result on the differences between Tarime and Sukuma cattle strains further confirms the preference of farmers in the Lake Zone for Tarime cattle than other strains of cattle (Laisser et al., 2015). As such, farmers' knowledge on unique attributes of their cattle breeds is usually passed on through generations (FAO/links, 2000) and thus our result has demonstrated evidence to farmers' beliefs and paves way to designing improvement programmes for Tarime cattle for not only ECF tolerance



but also in terms of productivity. Thirdly, this study has revealed a broad range of antibody percent positivity levels for both strains, but the majority of the Tarime cattle clustered to higher antibody PP categories. Besides being an epidemiological indicator, the level of antibodies in animals in an endemic area may also indicate a measure of resistance to infection pressure in the study area. It is possible that the higher level of specific antibodies reflects the response of resistant individuals in a *T. parva* endemic area under constant natural tick challenge. Probably, these findings could also suggest the ability of Tarime cattle to mount a stronger antibody response, which primarily play a crucial role in neutralization of *T. parva* sporozoites in early stages before ECF infection. This is also supported by our finding of lesser clinical ECF infections in Tarime compared to Sukuma cattle. The findings of lower parasite prevalence, but higher antibody levels shown by Tarime cattle suggest a potential state of endemic stability, whereby cattle develop a carrier state of *T. parva* parasites without clinical disease (Norval et al., 1992; Deem et al., 1993; Perry and Young, 1995; Matovelo et al., 2003). Our result concurs with Martins et al. (2010) who reported a significant negative association between antibody percent positivity levels in cattle and incidences of ECF cases.

This study has revealed, high seroprevalence which was indicated for both, Sukuma and Tarime cattle strains. The 100% seroprevalence indicates that all study animals had previous exposure to *T. parva*, although differences existed between the strains and individual cattle in terms of level of antibodies produced. The high seroprevalence obtained in this study area further demonstrates the potential development of a state of endemic stability in the Lake zone, whereby the majority of cattle are expected to be carriers as previously shown by Kazungu et al. (2015). Dipping regime did not show any influence on seroprevalence results.

## Conclusion

The present study has demonstrated differences in terms of tick burdens between Tarime and Sukuma cattle, whereby Tarime cattle carried significantly higher tick load. Tarime strain of cattle was also different from Sukuma cattle in terms of *T. parva* parasite prevalence and antibody percent positivity. The higher antibody levels but lower parasite prevalence shown by Tarime cattle suggests a higher proportion of resistant individuals in this strain, which may potentially support development of a *T. parva* carrier state. Our study provides evidence to farmers' beliefs in the Lake zone of Tanzania regarding resistance of Tarime compared to Sukuma cattle. This paves a way to designing improvement programmes for the Tarime cattle for rational utilization.

## Conflict of interest

The authors have not declared any conflict of interest.

## ACKNOWLEDGEMENTS

The authors are very grateful for the financial support from the Norwegian Agency for International Development (NORAD) through the programme for Enhancing Pro-poor Innovation in Natural Resources and Agricultural Value Chains (EPINAV) at Sokoine University of Agriculture. This financial support enabled us to accomplish this work. They would like to thank the staff of TALIRI, Mabuki and TVLA, Mwanza for their kind support in data handling and initial processing and storage of samples before being transported to SUA. They also thank Mr. Edson Rugaimukamu and Ms Yvette Kazungu for laboratory technical support. They are also grateful to the Livestock herdsman who devoted their time in looking after the experimental animals.

## REFERENCES

- Chenyambuga SW, Waiswa C, Saimo M, Ngumi P, Gwakisa PS (2008). Knowledge and perceptions of traditional livestock keepers on tick-borne diseases and sero-prevalence of *Theileria parva* around Lake Victoria Basin. *Livest. Res. Rural Dev.* 22(7).
- Das SM, Mkonyi JI (2003). Important aspects of conservation of indigenous cattle in Tanzania: A review. In: Tanzania Society of Animal Production Conference series. 30:59-70.
- deCastro JJ (1997). Sustainable tick and tick-borne disease control in Livestock improvement in developing countries. *Vet. Parasitol.* 71:77-97.
- Deem SL, Perry BD, Katende JM, McDemott JJ, Mahan SM, Maloo SH, Morzaria SP, Musoke AJ, Rowlands GJ (1993). Variations in prevalence of tick-borne diseases in Zebu cattle by agro-ecological zone: implications for East Coast fever immunisation. *Prev. Vet. Med.* 16:171-187.
- Di Giulio G, Lynen G, Morzaria S, Oura C, Bishop R (2009). Live immunization against East Coast fever – current status. *Trends Parasitol.* 25:85-92.
- FAO/LinkS (2000). Benefits and Risks of Sharing Local Knowledge. LinkS Technical Report No 3, FAO LinkS Project. Dar-es-Salaam.
- Gachohi J, Skilton R, Hansen F, Ngumi P, Kitala P (2012). Epidemiology of East Coast fever (*Theileria parva* infection) in Kenya, past, present and the future. *Parasit. Vect.* 5:194.
- George JE, Pound JM, Davey RB (2004). Chemical control of ticks on cattle and the resistance of these parasites to acaricides. *Parasitology* 129(7):353-366.
- Iams KP, Young JR, Nene V (1990). Characterisation of the gene encoding a 104-kilodalton micronemerothopy protein of *Theileria parva*. *Mol. Biochem. Parasitol.* 39:47-60.
- Katende JM, Toye P, Skilton RA, Nene V, Morzaria SP, Musoke AJ (1998). An ELISA for detection of *Theileria parva* antibodies in cattle using a recombinant polymorphic immunodominant molecule. *Parasitol. Res.* 84:408-416.
- Kazungu YEM, Mwege E, Ole Neselle M, Sallu R, Kimera SI, Gwakisa P (2015). Incremental effect of natural tick challenge on the infection and treatment method-induced immunity against *T. parva* in cattle under agro-pastoral systems in Northern Tanzania. *Ticks and Tick-borne Diseases* 6:587-591.
- Kivaria FM (2006). Estimated direct costs associated with tick-borne

- diseases on cattle in Tanzania, *Trop. Anim. Health Prod.* 38:291-299.
- Laisser ELK, Chenyambuga SW, Msalya G, Kipanyula MJ, Mdegela RH, Karimuribo ED, Mwilawa AJ, Kusiluka LJK (2015). Knowledge and perception on ticks, tick-borne diseases and indigenous cattle tolerance to East Coast fever in agro pastoral communities of Lake Zone in Tanzania. *Livest. Res. Rural Dev.* 27(4). 1<sup>st</sup> April, 2015. Available on line at: <http://www.lrrd.org/lrrd27/4/lais27064.html>.
- Laisser ELK, Kipanyula MJ, Msalya G, Mwegu ED, Mdegela RH, Karimuribo ED, Kusiluka LJK, Mwilawa AJ, Chenyambuga SW (2014). Tick burden and prevalence of *Theileria parva* infection in Tarime zebu cattle in the lake zone of Tanzania. *Trop. Anim. Health Prod.* 46(8):1397-1406.
- Londt JGH, Horak IG, de Villiers IL (1979). Parasite of domestic and wild animal in South Africa, XIII, The seasonal incidence of adult ticks (Acarina: Ixodidae) on cattle in the northern Transvaal. *Onderpoort J. Vet. Res.* 46:31-39.
- Martins SB, Di Giulio G, Lynen G, Peters A, Rushton J (2010). Assessing the impact of East Coast Fever immunisation by the infection and treatment method in Tanzanian pastoralist systems. *Prev. Vet. Med.* 97:175-182.
- Marufu MC (2008). Prevalence of ticks and tick borne diseases in cattle on communal rangelands in the highland areas of the Eastern Cape Province, South Africa, MSc. dissertation, University of Fort Hare.
- Mathee S, Meltzer DGA, Horak IG (1997). Sites of attachment and density assessment of ixodid ticks (Acari: Ixodidae) on impala (*Aepyceros melampus*). *Exp Appl. Acarol.* 21:179-192.
- Mathysse JG, Colbo MH (1987). *The Ixodid Ticks of Uganda*, Entomological Society of America. College Park, Maryland, USA.
- Matovelo JA, Gwakisa PS, Gwamaka M (2003). Induction of acquired immunity in pastoral zebu cattle against East Coast Fever after natural infection by early diagnosis and early treatment. *J. Applied Res. Vet. Med.* 1(2):136-142.
- Ministry of Water and Livestock Development, UROT (2004). National Tick and Tick-borne Disease Control Strategy. Directorate of Veterinary Services, Dar Es Salaam.
- MLFD (2015). Ministry of Livestock and Fisheries Development. Tanzania Livestock Modernization Initiatives (TLMI) for the period 2015/2016 - 2020/2021. Statement by the President of United Republic of Tanzania. July 2015. Available at <http://www.mifugouvuvu.go.tz>.
- Mugisha A, McLeod A, Percy R, Kyewalabye E (2005). Strategies, effectiveness and rationale of vector-borne disease control in the pastoralist system of south-west Uganda. *Trop. Anim. Health Prod.* 37:479-489.
- Musoke RA, Tweyongyere R, Bizimenyere E, Waiswa C, Mugisha A, Biryomumaisho S, MacHardy N (2004). Treatment of East Coast fever of Cattle with a Combination of Parvaquone and Frusemide. *Trop. Anim. Health Prod.* 36(3):233-245.
- Norval RAI, Perry BD, Young AS (1992). The epidemiology of theileriosis in Africa. Academic Press, London, UK. P 481.
- Odongo D O, Sunter JD, Kiara HK, Skilton RA, Bishop RP (2010). A nested PCR assay exhibits enhanced sensitivity for detection of *Theileria parva* infections in bovine blood samples from carrier animals. *Parasitol. Res.* 106 (2):357-65.
- Oura CAL, Bishop R, Wampande EM, Lubega GW, Tait A (2004). The persistence of component *Theileria parva* stocks in cattle immunized with the live vaccine against East Coast fever in Uganda. *Parasitology* 129:27-42.
- Paling RW, Mpangala C, Littikhuizen B, Sibomana G (1991). Exposure of Ankole and crossbred cattle to Theileriosis in Rwanda. *Trop. Anim. Health Prod.* 23:203-214.
- Perry BD, Young AS (1995). The past and future roles of epidemiology and economics in the control of tick-borne diseases of livestock in Africa: the case of theileriosis. *Prev. Vet. Med.* 25:107-120.
- SPSS (Statistical Packages for Social Science) (2008). SPSS for Windows, Release 16.0, User Manual, SPSS Inc. Chicago, USA.
- Swai ES, Karimuribo ED, Kambarage DM, Moshy WE, Mbise AN (2007). A comparison of seroprevalence and risk factors for *Theileria parva* and *Theileria mutans* in smallholder dairy cattle in the Tanga and Iringa regions of Tanzania. *Vet. J.* 174:390-396.
- Taylor GJ (2006). Factors affecting the production and reproduction performance of adapted beef cattle in southern africa. PhD thesis. University of Pretoria.
- Wambura PN, Gwakisa PS, Silayo RS, Rugaimukamu EA (1998). Breed-associated resistance to tick infestation in *Bos indicus* and their crosses with *Bos Taurus*. *Vet. Parasitol.* 77:63-70.

## CHAPTER FIVE

### 5.0 PAPER IV

#### **A Review on prevalence, control measure and tolerance of Tanzania Shorthorn Zebu cattle to East Coast fever in Tanzania**

**E. L. K. LAISSER**

Ministry of Education, Science and Technology, School Quality Assurance Department  
Eastern zone, P.O. Box 325, Morogoro, Tanzania

**S. W. Chenyambuga and G. Msalya**

Department of Animal, Aquaculture and Range Sciences, Sokoine University of  
Agriculture (SUA), P.O. Box 3004, Morogoro, Tanzania

**M. J. Kipanyula**

Department of Anatomy, Histology and Cell Biology, SUA, P.O. Box 3016, Morogoro,  
Tanzania

**R. H. Mdegela**

Department of Veterinary Medicine and Public Health, SUA, P.O. Box 3021, Morogoro,  
Tanzania

**E. D. Karimuribo**

Department of Medical Sciences, SUA, P.O. Box 3021, Morogoro, Tanzania

**A. J. Mwilawa**

Tanzania Livestock Research Institute, Mabuki, P.O. Box 352, Mwanza, Tanzania

**L. J. M. Kusiluka**

Office of the Vice Chancellor, Mzumbe University, P.O. Box 1, Mzumbe Tanzania.

Published in *Journal of Tropical Animal Health and Production*, 46 (8): 139-1406.

*August, 2014*

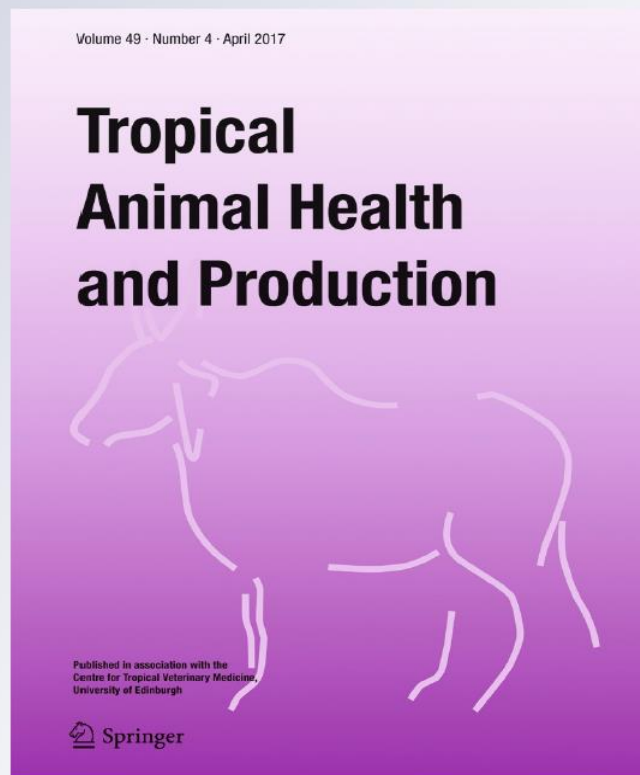
*A review on prevalence, control measure,  
and tolerance of Tanzania Shorthorn Zebu  
cattle to East Coast fever in Tanzania*

**E. L. K. Laisser, S. W. Chenyambuga,  
E. D. Karimuribo, G. Msalya,  
M. J. Kipanyula, A. J. Mwilawa,  
R. H. Mdegela & L. J. M. Kusiluka**

**Tropical Animal Health and  
Production**

ISSN 0049-4747  
Volume 49  
Number 4

Trop Anim Health Prod (2017)  
49:813-822  
DOI 10.1007/s11250-017-1266-z



Your article is protected by copyright and all rights are held exclusively by Springer Science +Business Media Dordrecht. This e-offprint is for personal use only and shall not be self-archived in electronic repositories. If you wish to self-archive your article, please use the accepted manuscript version for posting on your own website. You may further deposit the accepted manuscript version in any repository, provided it is only made publicly available 12 months after official publication or later and provided acknowledgement is given to the original source of publication and a link is inserted to the published article on Springer's website. The link must be accompanied by the following text: "The final publication is available at [link.springer.com](http://link.springer.com)".



## A review on prevalence, control measure, and tolerance of Tanzania Shorthorn Zebu cattle to East Coast fever in Tanzania

E. L. K. Laisser<sup>1,2</sup> · S. W. Chenyambuga<sup>2</sup> · E. D. Karimuribo<sup>3</sup> · G. Msalya<sup>2</sup> · M. J. Kipanyula<sup>4</sup> · A. J. Mwilawa<sup>5</sup> · R. H. Mdegela<sup>6</sup> · L. J. M. Kusiluka<sup>7</sup>

Received: 23 November 2016 / Accepted: 6 March 2017 / Published online: 22 March 2017  
© Springer Science+Business Media Dordrecht 2017

**Abstract** In Tanzania, control of East Coast fever (ECF) has predominantly relied on tick control using acaricides and chemotherapy, little on ECF vaccination, and very little on dissemination regarding animal immunization. In this paper, the prevalence, control measure, and tolerance of Tanzania Shorthorn Zebu (TSHZ) cattle to ECF are reviewed. In addition, the opportunities available for reducing the use of acaricides for the benefit of the farmers in terms of reduction of costs of purchasing acaricides and environmental pollution are described. The tick distribution and epidemiological factors for ECF such as the agro-ecological zones (AEZ), livestock production systems (LPS), strain, and age of the animals are also described. These factors influence the epidemiology of ECF and the distribution of TSHZ strains in different geographic locations of Tanzania. We have further showed that

there is a tendency of farmers to select among the strains of TSHZ for animals which can tolerate ticks and ECF and cross-breed them with their local strains with the aim of benefiting from the inherent characteristics of the most tolerant strains. Generally, many strains of TSHZ cattle are tolerant to tick infestation and ECF infection and can be bred to respond to the needs of the people. In this review paper, we recommend that in future, ECF epidemiological studies should account for factors such as livestock production system, agro-climate, breed of animal, tick control strategy, and the dynamic interactions between them. In conclusion, we have demonstrated that an integrated control method involving use of acaricides, immunization, and ECF-tolerant/-resistant animals is required.

**Keywords** East Coast fever · Tanzania shorthorn zebu · *Theileria parva* infection · Tolerance

✉ E. L. K. Laisser  
emalaisser@gmail.com

<sup>1</sup> School Quality Assurance Department, Ministry of Education, Science and Technology, Eastern Zone, P.O. Box 325, Morogoro, Tanzania

<sup>2</sup> Department of Animal, Aquaculture and Range Sciences, Sokoine University of Agriculture (SUA), P.O.Box 3004, Chuo Kikuu, Morogoro, Tanzania

<sup>3</sup> Department of Medical Sciences, SUA, P.O.Box 3021, Chuo Kikuu, Morogoro, Tanzania

<sup>4</sup> Department of Anatomy, Histology and Cell Biology, SUA, P.O.Box 3016, Chuo Kikuu, Morogoro, Tanzania

<sup>5</sup> Tanzania Livestock Research Institute, Mabuki, P.O. Box 352, Mwanza, Tanzania

<sup>6</sup> Department of Veterinary Medicine and Public Health, SUA, P.O.Box 3021, Chuo Kikuu, Morogoro, Tanzania

<sup>7</sup> Mzumbe University, P.O. Box 1, Mzumbe, Morogoro, Tanzania

### Introduction

The total number of cattle raised in Tanzania is 25.8 million and most of them are indigenous cattle belonging to the Tanzania Shorthorn Zebu (TSHZ). The TSHZ has several strains which include Iringa Red, Maasai, Singida White, Gogo, Chagga, Pare, and Mbulu (Msanga et al. 2001; Das and Mkonyi 2003). These animals are used for various functions, especially for provision of animal protein food (meat and milk), draft power as labor saving technology, manure for fertilizing crop fields, and biogas for electrification or cooking fuel which has a potential for reducing deforestation. Furthermore, they play important social functions in traditional societies, including payment of dowry and sacrifices in traditional ceremonies (MLFD 2015). They also provide employment and income for the majority of the smallholder

farmers living in rural areas. The TSHZ animals usually survive and reproduce under harsh climatic, nutritional stress, and poor management conditions under the smallholder production systems (MLFD 2015).

East Coast fever (ECF) is a tick-borne disease (TBD) of cattle which is caused by a protozoan parasite namely *Theileria parva*. The parasite is transmitted by a three-host tick called *Rhipicephalus appendiculatus*, which have dropped from infected cattle during the preceding stage of the life cycle (Norval et al. 1992). In cyclopropagative and transstadial transmission, the *T. parva* parasite multiplies and undergoes cyclical changes within two developmental stages (nymphs and adult) of the vector. In Tanzania, ECF is the major cause of cattle deaths and costs the government a huge financial resource for its control. For example, the costs of acaricide application, which is the primary means of tick control, has been estimated to range between US\$ 6 and US\$ 36 per adult animal in the East African countries including Tanzania (Minjauw and McLeod 2003; Mugisha et al. 2005; Kivaria 2006). In addition, the disease prevents the introduction of more productive but ECF-susceptible exotic breeds of cattle, hence, hampering the development of the livestock sector considerably.

This review is based on the recognition that the application of acaricides as the most common method used to control ticks in the country has caused the development of tick resistance to most acaricides available in the market and has reduced these products' useful lifetime due to improper use. Also, the improper use of acaricides results into the presence of chemical residues in meat, milk, and environmental pollution and this prompts the need for better monitoring of their application (Graf et al. 2004; Mugisha et al. 2005; Castro-Janer et al. 2010).

Like other indigenous African cattle, the TSHZ cattle are credited for their inherent ability to tolerate endemic diseases such as East Coast fever (Marufu 2008). As such, most livestock keepers do not apply acaricide to control ticks because they believe that their animals can tolerate ticks and TBDs. The TSHZ animals have survived for many years without or with minimum ticks and ECF control, yet they contributed significantly to the welfare of rural people, who accounts for 80% of the population in Tanzania. Farmers in one community understand the degree of tolerance of their animals to tick infestation and ECF infection compared to those of other communities (Laisser et al. 2015). This can be evidenced by a situation where one community hires or buys a bull from another community due to a belief that the strain of the animal bought is superior in terms of ticks and ECF tolerance compared to the one in their community (Chenyambuga et al. 2010). Although it is obvious that TSHZ animals can tolerate ticks and ECF compared to exotic breeds and there is increasing awareness on the subject, there are no compiled data to support the farmer's belief and confirm this evidence for

various strains of TSHZ. We had five specific objectives for this article;

1. To review the prevalence of ECF in various production systems in Tanzania
2. To highlight the epidemiological factors influencing the prevalence of ECF
3. To highlight the tick and ECF control methods in various production systems in Tanzania
4. To review the tolerance of African indigenous cattle to ticks and ECF infection
5. To review the mechanisms for tick and ECF resistance in cattle

### Review methodology

A search of peer-reviewed publications on ECF, ticks, and ECF-tolerant cattle in Tanzania was conducted from comprehensive databases including PubMed, ScienceDirect, Swetswise, and CAB direct. The search was extended to available theses, conference proceedings, and project reports. Keywords were standardized across the databases to produce comparable searches and these were East Coast fever, *Theileria parva*, *Rhipicephalus appendiculatus*, epidemiology, prevalence, incidence, cattle, tolerance, and Tanzania. References of all relevant articles were also searched to identify articles that could have been missed in the search. The search was conducted for all available years in each database. The keyword search produced 356 articles. We screened all the articles and then identified the most relevant ones for Tanzania.

### Prevalence of ECF in various production systems in Tanzania

Up to date, several studies have been conducted and others are still underway regarding the occurrence of ticks and ECF disease across different production systems in Tanzania. Table 1 shows the findings reported by different researchers from Tanzania on ticks, TBDs, ECF, and epidemiology of *T. parva* in pastoral societies. *R. appendiculatus* is widely distributed in Tanzania in those climatic and vegetational areas that are suitable for it (Fig. 1) and the most abundant tick species in those areas (Table 1). So far in large areas of Tanzania, this species of tick is either completely absent or has never been recorded. In Tanzania, there are several systems for livestock production and management which influence the prevalence of ECF. This is because in each production system, different measures are taken to control the vector ticks which are responsible for the transmission of parasites.

Table 1 Findings from research done in Tanzania on indigenous cattle and ticks and prevalence of *Theileria parva*

S/ N	Study	Strain targeted	Ecological zone	Research output	References
1	Baseline study on farmers knowledge and attitude ticks and tick-borne diseases	Sukuma and Tarime zebu	The lake zone	(i) Farmers have substantial knowledge on ticks and tick-borne disease (they even name ticks and TBDs on their vernacular language) (ii) Tick and tick-borne diseases are not important than other animals' diseases and ECF is only a problem to calves (iii) Calves need to be protected than adult animals (iv) Dipping regime is irregular (i) Common tick genera are <i>Rhiphcephalus appendiculatus</i> , <i>Boophilus</i> , <i>Amblyomma</i> , and <i>Hyalomma</i> (ii) Tick burden is high (iii) <i>Theileria parva</i> prevalence in the area is relatively high but <i>Theileria parva</i> -infected cattle do not show clinical signs of ECF	Laisser et al. (2015) Laisser et al. (2014)
2	A study on Tarime zebu cattle to investigate ticks species, tick burden, and prevalence of <i>Theileria parva</i>	Tarime zebu	The lake zone	(i) Tarime cattle tolerate more tick burden than Sukuma zebu cattle (ii) Tarime cattle unlike Sukuma cattle can be infected by <i>Theileria parva</i> but do not show ECF clinical signs (iii) Tarime cattle show high immune response to <i>Theileria parva</i> than Sukuma cattle	Laisser et al. (2016)
3	A comparative study between Sukuma and Tarime zebu on ticks and <i>Theileria parva</i> tolerate	Sukuma and Tarime zebu	The lake zone	(i) Farmers have substantial knowledge on ticks and tick-borne disease (they even name ticks and TBDs on their vernacular language) (ii) Tick and tick-borne diseases are not important than other animals' diseases and ECF is only a problem to calves (iii) <i>Theileria parva</i> prevalence is high in East Africa (iv) Calves need to be protected than adult animals (i) <i>Theileria parva</i> prevalence is low (ii) Farmers have knowledge on ticks and ECF (iii) Tick control and cattle management in the area are under a state of endemic instability	Chenyambaga et al. (2010) Tarimo (2013)
4	A study on farmers knowledge and attitude on ticks and tick-borne diseases	Tarime, Ankole, Boran, and Kenya shorthorn zebu	The lake zone of East Africa (Tanzania, Kenya, and Uganda)	(i) Improper dipping results in tick resistance (ii) Pastures are the source of ticks which infect animals due to communal grazing	Kambarage (1995)
5	A study to determine seroprevalence of <i>Theileria parva</i> , knowledge, attitude, and practices of livestock keepers on East Coast fever (ECF) on indigenous cattle	Mixed strains, Maasai, and Sukuma zebu	Eastern zone—Kilosa district	(i) <i>Theileria parva</i> parasites are widely distributed throughout the two geographical sites (ii) The seroprevalence of <i>T. parva</i> is relatively high in Tanga and Iringa regions (iii) Pasture-grazed animals are more likely to be seropositive than those that are zero-grazed	Swai et al. (2007)
6	A study to investigate the cause of animal death	Iringa Red and Maasai zebu	Northern and highland zone	(i) Common tick genera are <i>Rhiphcephalus appendiculatus</i> , <i>Boophilus</i> , <i>Amblyomma</i> , and <i>Hyalomma</i> (ii) <i>Theileria parva</i> infection prevalence in adult <i>R. appendiculatus</i> is low	Swai et al. (2005)
7	A study to determine the distribution and prevalence and to quantify risk factors for <i>Theileria parva</i>	Mixed strains	Northern zone	(i) Seroprevalence was significantly higher in vaccinated than unvaccinated cattle (ii) Prevalence of <i>T. parva</i> parasites is significantly higher in vaccinated than unvaccinated cattle	Kazungu et al. (2015a)
8	A study to assess the incremental effect of natural tick challenge on the infection and treatment method-induced immunity against	Maasai zebu cattle	Northern zone		



Table 1 (continued)

S/ N	Study	Strain targeted	Ecological zone	Research output	References
	<i>T. parva</i> under agro-pastoral systems in Simanjiro district, Northern Tanzania				
10	A cross-sectional study of <i>T. parva</i> antibody and parasite prevalence in smallholder farms in Tanzania to compare the impact of two tick control regimes	Maasai, Sukuma, and Tairime zebu cattle	Lake zone and northern zone	(iii) High seroprevalence in vaccinated and unvaccinated cattle suggests a likely state of endemic stability to <i>T. parva</i> in the study area  (i) Cattle under the sporadic tick control have significantly high antibody levels compared to those managed under regular tick control (ii) <i>T. parva</i> antibody percent positivity is lower in cattle under regular tick control than in cattle under sporadic tick control	Kazungu et al. (2015b)
11	A study on the relative resistance to tick infestation of zebu ( <i>Bos indicus</i> ) in comparison to crossbred ( <i>B. indicus</i> × <i>B. taurus</i> ) cattle	Meni, Mbulu, and Iringa Red	Northern zone	(i) Results show that pure zebu cattle are less infested with ticks compared to zebu-taurine crosses under identical field conditions (ii) Zebu cattle also have significantly higher serum complement level than crossbred cattle	Wambura et al. (1998)

The livestock production systems in Tanzania mainly include pastoralism (traditional extensive livestock production system), agro-pastoralism (traditional crop-livestock production system), and ranching (commercial/intensive livestock production system). These cattle production systems can be simply divided into extensive (low input) and intensive (high input) (MLFD 2011). About 97% of the Tanzanian cattle are reared under the traditional extensive livestock production system (MLFD 2015).

In the traditional extensive production system, which is the most predominant in Tanzania, indigenous cattle are the main type of animals kept (MLFD 2015). Since these animals are adapted to and selected for ability to withstand harsh environmental conditions and diseases, little efforts are taken by farmers to control ECF; hence, the prevalence of this disease is high (Ngowi et al. 2008). In the agro-pastoral production system where both crop and extensive livestock production are practiced, cattle are herded to graze in different sites during dry and wet seasons, and in the backyard production system where cattle are kept around farmers' homesteads, the prevalence of ECF is variable (Chenyambuga et al. 2010). For example, when the animals are shifted to other places during dry season to search for pasture, they tend to pick infected ticks which will, in turn, increase the prevalence of ECF in their areas (Laisser et al. 2014). Tick infestation is a common problem in pastoral and agro-pastoral areas due to the fact that most livestock farmers do not control ecto-parasites through dipping or spraying. The prevalence of ECF observed in the agro-pastoral areas of the lake zone of Tanzania by Chenyambuga et al. (2010) and Laisser et al. (2014) was 80 and 27.7%, respectively. In Tanga region where most of the farmers graze their cattle around their households or practice zero grazing, a very low prevalence of 2.7% has been reported (Swai et al. 2007). Moreover, the observed lower tick infestation and ECF infection in Tanga could be attributed to regular application of tick and tick-borne disease control methods.

Higher prevalence of *T. parva* has been reported by Kazungu et al. (2015) in pastoral areas of the Maasai communities of Simanjiro district, northern Tanzania. According to Kazungu et al. (2015), apart from lack of tick control measures in pastoral areas, proximity to national parks and game reserves contributes to higher prevalence of *T. parva* in pastoral areas. Furthermore, the control measure practiced in an area has much influence on the prevalence of *T. parva*. Kazungu et al. (2015) reported a prevalence of 50.39 and 19.69% for *T. parva* infection in vaccinated and unvaccinated Maasai cattle, respectively, in Simanjiro district. Another study done by Haji et al. (2014) in five villages (pastoral areas) of Monduli District namely Mswakini, Lake Manyara, Naitolia, Makuyuni, and Nanja revealed an overall *T. parva* prevalence of 12.5%. Komwihangilo et al. (2009) reported *T. parva* prevalence of 30% in Mpwapwa breed kept in the central zone of Tanzania under the semi-

**Table 2** Tick-tolerant zebu in Africa

S/N	Breed	Country	Reference
1	Afrikander	South Africa	Bonsma (1940) in Bonsma (1981)
2	Brahman	South Africa	Rechav (1987), Rechav et al. (1990)
3	Bonsmara	South Africa	Scholtz et al. (1991)
4	Ngunis-Nkoni (Sanga)	South Africa	Scholtz et al. (1991)
5	Boran	Kenya	de Castro (1991)
6	East African Zebu	Kenya	Latif et al. (de Castro 1991)
7	Kenana	Sudan	Latif (1984)
8	Butana	Sudan	Latif (1984)
9	Boran	Ethiopia	Ali (1989) in de Castro (1991)
10	Horro	Ethiopia	Ali (1989) in de Castro (1991)
11	Nkoni (Sanga)	Zimbabwe	Norval et al. (1988)
12	Tarime zebu	Tanzania	Laisser et al. (2016)

Source: adapted from de Castro (1991) and Laisser et al. (Laisser et al. 2016)

intensive system while Swai et al. (2007) found the prevalence of *T. parva* to be 77.5% in Iringa Red zebu raised under the agro-pastoral production system in Iringa Rural and Kilolo districts in the southern highland zone of Tanzania. The lower *T. parva* prevalence in Mpwapwa cattle is because the breed is an improved breed kept by small-scale farmers who practice regular dipping/spraying with acaricide to control ticks.

#### Epidemiological factors influencing the prevalence of ECF

The epidemiology of ECF is largely influenced by varying environmental conditions such as agro-ecological zones, live-stock production system, and animal breed and age (Gachohi et al. 2012). There are several factors that may influence the epidemiology of ECF disease, but the main one is the control measures against the transmitting vector of *T. parva* parasite, a tick of the genus *R. appendiculatus*. The use of acaricides to control tick infestation through dipping or spraying is the main method used in Tanzania. However, the acaricides used in this method are very expensive and acaricide application is uneconomical to most farmers (Kivaria 2006); hence, farmers tend to stop dipping/spraying their animals, use below recommended dilution, or apply acaricide irregularly (Laisser et al. 2014). In addition, many farmers do not apply acaricides properly due to lack of knowledge and skills of application, and this causes high tick infestation in cattle (Chenyambuga et al. 2010) and increases tick resistance to acaricide. This trend has led *T. parva* parasites to persist and hence high number of ECF cases for calves in traditional livestock production systems.

Change in climate is another factor influencing epidemiological of ECF. Tanzania has faced continuous climatic changes in various agro-ecological zones and this has affected the

distribution of tick vectors. Climate change includes change in rainfall pattern and distribution, occurrence of drought, and low and high temperatures (Kimaro and Chibinga 2013). The change in these climatic factors influences the abundance or distribution of *T. parva* parasites in a given agro-ecological zone by affecting the survival of the parasite or the intermediate vector (Kimaro and Chibinga 2013). In the northern highlands of Tanzania (Kilimanjaro, Arusha, Usambara in Tanga region), *R. appendiculatus* is said to be numerously high during the rainy season; this is quite similar to the situation in the southern highlands which also have a relatively high number of *R. appendiculatus* ticks during the wet season (Iringa, Mbeya, and Rukwa regions) (Chenyambuga et al. 2008).

Large numbers of ticks, mainly *R. appendiculatus*, are usually observed during the period between the end of rainy season and start of dry seasons. The amount of rainfall is the principal stimulus to *R. appendiculatus* activity (Laisser et al. 2016). The low number of tick counts in some of agro-pastoral communities could be related to the low number of traditional cattle stock and improved management aspect on tick control. The local cattle grazing in communal areas is the main source of ticks in most areas because of irregular dipping or absence of tick control in traditional communities (Chenyambuga et al. 2010; Laisser et al. 2014). However, the prevalence of *T. parva* in some agro-ecological zones is low due to the development of endemically stable condition (Kazungu et al. 2015a). Most research findings show that under traditional management system, there is a condition of endemic stability due to repeated contact of the animals with parasite (Kivaria et al. 2012). Endemic stability here means presence of more animals with higher (>70%) serum antibodies to *T. parva* where no or few cases of ECF. In contrast where effective and intensive tick control is practiced, it induces a high state of endemic instability whereby animal serum antibody is less or equal to 30% and more animals succumb to ECF (Kivaria et al. 2012).



Fig. 1 A map of Tanzania showing distribution of ticks

### Tick and ECF control methods in various production systems in Tanzania

Tanzania has a tick control policy that emphasizes on controlling the spread of ticks from endemic zones to non-endemic zones and protecting infiltration of ticks from other neighboring countries through movement or exportation of cattle. The control strategy for this policy includes dipping regimes or spraying in all traditional and private livestock farms, construction of stock routes and grounds, and lastly conducting research for tick and tick-borne diseases with focus on immunology and tick ecology (MLFD 2015). Generally, the methods used for controlling ticks and tick-borne diseases such as ECF in Tanzania involve the use of acaricides for vector ticks and chemotherapy for sick animals as well as immunization of cattle by the infection and treatment method (ITM) to a small extent (Perry 1994; Musoke et al. 2004; Oura et al. 2004). However, tick control methods differ depending on production system. These production systems include traditional extensive livestock production, traditional crop-livestock production, and intensive livestock production system.

#### Traditional extensive livestock production system

In this system, livestock keepers own many indigenous zebu cattle which are grazed together under free range or herded

grazing management conditions in communal rangelands with minimal production input. Under this system, there is little or no tick control at all. However, *T. parva* infections occur in this system and result in little loss in productivity and/or mortality. In early 1980s, the government of Tanzania constructed many dip tanks in pastoral and agro-pastoral communities. The dip tanks were run by the government for a short time before being handed to the societies who did not afford to run them due to cost and lack of knowledge (Swai et al. 2007). As a result, many dip tanks in rural areas were abandoned and become non-functional. Consequently, spray method became a common method of tick control among the livestock farmers in rural areas (Laisser et al. 2015). Even though this method is easy to apply, it is not a good method to control ticks in communal areas because some farmers do not use appropriate dilution dose of acaricides while others apply irregularly; this results in tick developing resistance. Furthermore, under a spray method, the acaricides do not reach to all parts of the animal; hence, not all ticks are killed (Laisser et al. 2014). It has also been reported that in the lake zone of Tanzania, livestock keepers do not spray/dip their animals regularly and some dip/spray their animals only when they have money to buy the acaricide; others apply the acaricide only twice a year while others do not apply acaricide at all (Chenyambuga et al. 2010; Laisser et al. 2015). In those areas, ticks are available throughout the year and ECF prevail in many animals kept in communal rangeland. Nevertheless, most pastoralists and agro-pastoralists have local knowledge and experience on how to treat ECF infection by burning the lymph node of sick animals using hot iron and administering oxytetracycline (OTC) injection (Chenyambuga et al. 2010; Laisser et al. 2015).

Another ECF control method which has been introduced recently in Tanzania is ITM. This involves infecting cattle with a calibrated number of *T. parva* parasites and concurrently giving them an injection of a long acting OTC treatment. OTC slows down the multiplication of *T. parva* parasite and provides animals' immune system to fight against the disease. The vaccine used in Tanzania was the Muguga cocktail from Kenya (Patel et al. 2016). This method has been introduced in Maasai community in Simanjiro district (Kazungu et al. 2015). The method seems to be cost-effective for the control of ECF and reduces significantly mortality rate in the immunized animals (Martins et al. 2010). Although ITM offers a valuable alternative for ECF control (Oura et al. 2004), its widespread application has faced many challenges. These include the requirement for cold chain mode of delivery to remote areas and high cost of the vaccine (up to US\$10 per animal), which is unaffordable to most smallholder herders (Di Giulio et al. 2009). Furthermore, ITM does not completely eliminate the need for acaricide application due to the potential existence of other tick-borne diseases. The method is not widely used by farmers; hence, efforts are needed to educate

the livestock-keeping communities to accept this method. In traditional livestock-keeping societies, anything involving payment for livestock disease control before the outcome of it is seen, the local communities usually do not accept, especially those with many animals. Most traditional livestock keepers do not see ticks or ECF as a burning issue because adult animals suffering from ECF do recover without treatment.

#### Traditional crop-livestock production system

Traditional crop-livestock system integrates livestock production with other subsistence farm enterprises, particularly traditional crop agriculture. The population of cattle in this system is smaller compare to the extensive system because of land limitation. Usually, farmers are forced to have few animals in order to be able to carry out other agricultural activities; usually, a small portion of land is left uncultivated to be used for grazing animals during crop-growing season. Alternatively, animals are herded away from the farm during cropping season and returned back during the dry/harvesting time. This farming system exists in the highland areas as well as Lake Victoria basins of Tanzania in which zebu cattle are predominantly kept.

In this system, tick and ECF control methods vary depending on management practices existing in a particular community. Moreover, the control of ticks vary from one farmer to another; some farmers control ticks regularly, others on irregular basis while others do not control at all. This situation results in high tick burden in most animals (Laisser et al. 2014). In some areas, for example in Serengeti, the local government imposes a bylaw forcing each farmer to dip or spray his/her animals at least once every 2 weeks. This has reduced tick burden to a large extent in animals grazed in communal rangelands but increased *T. parva* prevalence (Laisser et al. 2014). This observation agrees with Kivaria et al. (2012) who observed an increase of *T. parva* prevalence in areas where strict tick control regime was practiced compared to the areas with less tick control measure. Usually, crop-livestock farmers do not graze their animals together; instead, each farmer has his/her own land to graze his/her animals (Laisser et al. 2015). This grazing system tends to minimize ticks and ECF. Generally, under crop-livestock system, tick and ECF control is taken seriously compared to the extensive system. This is probably due to the fact that there are fewer animals to manage and farmers have economic power to purchase acaricides.

#### Intensive livestock production system

In Tanzania, commercial systems consist of beef or dairy cattle farms in which highly productive exotic breeds of cattle and their crosses with indigenous cattle are kept. In the context of ECF control, these systems are characterized by intensive

weekly application of acaricide that leads to the disruption of *T. parva* transmission. This system has become less important in Tanzania because the majority of the large farms has collapsed or has been privatized. We could not find any observational study conducted in this system in Tanzania from the literature.

#### Alternative tick control methods

Breeding of tick-resistant cattle, pasture spelling, pasture burning, and planting some special grasses have also been considered as means for tick control. Gladney et al. (1974) concluded that insect control based on sterile males or genetic manipulations offers little promise while pheromone attractants could be useful for domestic pets or for ticks attached on specialized sites. Mbatia et al. (2002) reported that farmers also used alternative methods such as used engine oil (12%), Jeyes fluid (24%), chickens (4%), and manual de-ticking (2%). Kaaya and Hassan (2000) reported that the use of entomopathogenic fungi to control ticks may reduce the frequency of chemical acaricide use and the need for treatment of tick-borne diseases. They also concluded that mycopesticides are safer for the environment than conventional acaricides. However, in Tanzania, this method does not exist and, hence, there is a need to explore the suitability of the method under farmers' conditions.

Due to the disadvantages of chemical acaricide products, the adoption of alternative control methods can minimize such problems. Wharton (1983) briefly reviewed the alternative methods of tick control and concluded that the utilization of host resistance, while offering an attractive approach to tick control, raises many questions even with the relatively simple *Boophilus microplus* and *Babesia* association. Resistance is an acquired characteristic and each animal develops its own level of resistance in response to tick challenge; the level may be high (as in most zebu cattle) or low (as in most European cattle), but a wide range of resistance occurs in all breeds of cattle. It is heritable, and selection and breeding for tick resistance are possible not only in zebu × European breeds but also within European breeds. However, selection for resistance or culling for susceptibility at present is based on tick numbers surviving on cattle exposed either naturally or artificially to tick challenge. This raises obvious problems for the cattle producer who is concerned about the effects of these ticks on production. Wharton (1983) showed that the most logical method of alleviating tick depredations would be to capitalize on host-parasite relationships that evolved in nature. Cattle have survived in Asia and Africa despite the prevalent of *Babesia*, *Theileria*, and their *Boophilus* and *Rhipicephalus* vectors. Host resistance, expressed by an animal's ability to prevent the maturing of large numbers of ticks, and disease immunity are survival mechanisms for the host and for external and internal parasites. The problem is not only to utilize

these attributes but also to increase productivity. Resistance to *Boophilus microplus* is associated primarily with zebu (*Bos indicus*) cattle (Bock et al. 1997). Considerable progress has been made in developing resistant *B. indicus* × *Bos taurus* beef and dairy cattle that limit the effects of ticks while retaining high productivity (Hayman 1974; Turner 1975). Moreover, improvement of the nutrient value of pasture would allow cattle to develop a better resistance to tick infestation (MLFD 2015).

### African cattle breeds tolerant to ticks and ECF

Resistance to tick infestation varies among individuals and breeds of cattle. It is known that in many subtropical and semi-arid environments in Africa, indigenous breeds are highly resistant to ticks and ECF (Norval et al. 1991). The phenomena of host resistance to ticks and enzootic stability to tick-borne diseases are well documented by Perry et al. (1985) and Latif and Pegram (1992). The ability of cattle to resist ticks and tick-borne diseases such as theileriosis depends on the strength of their body immunity to respond against the infectious sporozoites, schizonts, and piroplasm parasitic antigens. Development of a stronger immunity system comes about through exposure to such diseases (Kivaria et al. 2012). Studies have shown that the advantages of indigenous cattle with regard to tolerance to ECF disease are results of prolonged exposure of the animals to *T. parva* parasite. The prolonged exposure to the parasite makes the animal develop immunity to the parasite, a condition known as carrier state (Kivaria et al. 2012). Furthermore, the ability to tolerate *T. parva* parasites by indigenous cattle can be artificially increased by vaccination (Kazungu et al. 2015). Once an animal gains immunity following exposure to infected ticks or through calves borne to immune dams, tick control frequency can be reduced so as to maintain endemic stability in a population of indigenous cattle (Laisser et al. 2016).

In East Africa and Southern Africa, Zebu and Sanga cattle and their crossbreds are considered to be tolerant to ECF (Ndung'u et al. 2005; Marufu 2008). Table 2 shows African cattle breeds that are resistant to ECF including Afrikander cattle, Brahman, Bonsmara, and Ngunis-Nkoni (Sanga) all from South Africa, Boran, and East African Zebu found in Kenya, Kenana, and Butana found mainly in Sudan. Others breeds are Boran and Horro from Ethiopia, Tarime zebu from Tanzania, and Nkoni/Sanga from Zimbabwe (de Castro 1991; Chenyambuga et al. 2010; Laisser et al. 2015, 2016).

Wambura et al. (1998) also conducted a research to determine the difference in tick infestation and tick susceptibility between TSHZ and their crosses with exotic breed. The TSHZ strains were Meru, Mbulu, and Iringa Red and the crosses were Meru × Friesian and Iringa Red × Friesian. In their study, they found that TSHZ strains had less tick infestation

compared to the crossbreds. Furthermore, a high level of ECF infection in crossbred populations was clearly observed. These findings are in accordance with the findings reported by Perry (1994) that improved breeds including European taurines are susceptible to ECF.

In Tanzania, most traditional livestock keepers believe that their local cattle are tolerant to ticks and diseases. As a result of this belief, some strains are moved from their place of origin to other places (Chenyambuga et al. 2010; Mwambene et al. 2012). Although only one study has been done to compare two strains of TSHZ on tolerance to ticks and ECF (Laisser et al. 2016), all survey studies conducted show that most traditional livestock farmers claim that their cattle are tolerant to ticks or TBD diseases (Msanga et al. 2012; Mwambene et al. 2012; Laisser et al. 2015). The belief that TSHZ cattle are tolerant to ticks and ECF is supported by the evidence provided by findings in the literature which shows that zebu cattle survive without regular dipping/spraying and that infected animals do recover without treatment using veterinary drugs (Laisser et al. 2014; Laisser et al. 2015; Kazungu et al. 2015). This implies that the indigenous strains of zebu cattle in Tanzania possess genes which enable them to live and produce under high tick and ECF challenges. This is in agreement with Rege and Tawah (1999) who stated that indigenous cattle are blessed with tick resistance and tolerance to vector-borne diseases and they perform better than exotic breeds under low-input conditions and climatic stresses, especially during times of drought. However, according to Chenyambuga et al. (2010) and Kipronol (2009), most livestock keepers in rural areas feel that ECF, which is caused by *T. parva*, has serious effects on calves than in adult cattle. Therefore, calves need to be protected by regular dipping/spraying as they are important as replacement stock.

### Mechanisms for tick and ECF resistance

The immune responses are age related such that calves borne to immune dams become more resistant than calves borne to non-immune cows. Other factors that influence the ability of cattle to resist tick infection include heritability of the trait where cattle acquire the tolerance ability through inheritance, natural exposure to infected ticks, immunization by infection and treatment method, increasing tick challenge, and increased calf recovering rate after a disease challenge.

### Conclusion

It is therefore recommended (1) to conduct further investigations on un-dipped herds of cattle to clarify the status of endemic stability to TBDs and the possibility of allowing a non-

dipping strategy to be extended much more widely in other agro-ecological zone, (2) to investigate the *T. parva* carrier state and establish whether or not resistant cattle constitute a practical danger to other breeds, (3) to define appropriate tick control regimes which integrate vaccination of the high-grade breed, and (4) to develop revised tick control strategies in an integrated package for each agro-ecological zone.

**Acknowledgements** The authors are very grateful for the financial support from the Norwegian Agency for International Development (NORAD) provided through the program for Enhancing Pro-poor Innovation in Natural Resources and Agricultural Value Chains (EPINAV) at Sokoine University of Agriculture, Tanzania.

#### Compliance with ethical standards

**Conflict of interest** The authors declare that they have no conflict of interest.

#### References

- Bock, R.E., de Vos, A.J., Kinston, T.G., McLellan, D.J., 1997. The effect of breed of cattle on innate resistance to infection with *Babesia bovis*, *Babesia bigemina*, and *Anaplasma marginale*. *Australian Veterinary Journal*, Volume 5, pp 337–340.
- Bonsma, J.C., 1981. Breeding tick-repellent cattle. In: Whitehead G B and Gibson J D (eds), *Tick biology and control*. Tick Research Unit, Rhodes University, Graham's town South Africa, pp. 67–77.
- Castro-Janer, E., Rifran, L., González, P., Piaggio, J., Gil, A. and Schumaker, T.T.S., 2010. *Rhipicephalus (Boophilus) microplus* (Acari: Ixodidae) resistance to fipronil in Uruquay evaluated by in vitro bioassays. *Veterinary Parasitology*, Volume 169, pp 172 – 177.
- Chenyambuga, S.W., Nalaila, S.M. and Mbagi, S.H., 2008. Assessment of uses, special qualities and management aspects of Iringa Red Zebu cattle in Tanzania. *Livestock research for Rural Development*, <http://www.lird.org/lird20/2/chen20017.htm>. (Accessed 07.11.2016).
- Chenyambuga, S.W., Waiswa, C., Saimo, M., Ngumi, P. and Gwakisa, P.S., 2010. Knowledge and perceptions of traditional livestock keepers on tick-borne diseases and sero-prevalence of *Theileria parva* around Lake Victoria Basin. *Livestock Research for Rural Development*, Volume 22 Article No. 7. Retrieved July 25, 2016, from [http://www.lird.org/New\\_folder/4/chen22135.htm](http://www.lird.org/New_folder/4/chen22135.htm).
- Das, S.M., Mkonyi, J.I., 2003. Important aspects of conservation of indigenous cattle in Tanzania: A review. In: Tanzania Society of Animal Production Conference series, Volume 30, pp 59–70.
- de Castro, J.J., 1991. Resistance to ixodid ticks in cattle with an assessment of its role in tick control in Africa. In: Axford, R.F.E., and Owen, J.B.(eds), *Breeding for disease resistance in farm animals*, CABI, Wallingford
- Di Giulio, G., Lynen, G., Morzaria, S., Oura, C. and Bishop, R., 2009. Live immunization against East Coast fever – current status. *Trends Parasitology* 25, pp 85–92.
- Gachohi, J., Skilton, R., Hansen, F., Ngumi, P. and Kitala, P., 2012. Epidemiology of East Coast fever (*Theileria parva* infection) in Kenya, past, present and the future. *Parasites and Vectors*, Volume 5, Article No. 194.
- Gladney, W.J., Grabbe, R.R., Ernest, S.E. and Oehler, D.D., 1974. The Gulf Coast tick: evidence of a pheromone produced by males. *Journal of Medicine Entomology* 11, pp 303 – 306.
- Graf, J.F., Gogolewski, R., Leach-Bing, N., Sabatini, G.A., Molento, M.B., Bordin, E.L and Arantes, G.J., 2004. Tick control: an industry point of view. *Parasitology* 129 pp 427–442.
- Haji, I. J., Malele, I. and Namangala, B., 2014. Occurrence of haemoparasites in cattle in Monduli district, northern Tanzania. *Onderstepoort Journal of Veterinary Research*, Volume 81, Article No. 1.
- Hayman, R.H., 1974. The development of the Australian milking zebu. *World Animal Review* FAO 11 pp 31–35.
- Kaaya, P.G. and Hassan, S., 2000. Entomogenous fungi as promising biopesticides for tick control. *Experimental Applied Acarology*, Volume 24, Article 12, pp 913 – 926.
- Kambarage, D.M., 1995. East Coast fever as a continue constraint to livestock improvement in Tanzania; a case study. *Tropical Animal Health and Production*, Volume 27, Article 3, pp 145 - 149.
- Kazungu, Y.E.M., Mweha, E., Kimera, S.I. and Gwakisa, P., 2015a. Sero-prevalence and carrier state of *Theileria parva* in cattle under two tick control regimes in small-holder farming systems of Tanzania. *Livestock Research for Rural Development* Volume 27, Article 6.
- Kazungu, Y.E.M., Mweha, E., Ole Neselle, M., Sallu, R., Kimera, S.I. and Gwakisa, P., 2015b. Incremental effect of natural tick challenge on the infection and treatment method-induced immunity against *T. parva* in cattle under agro-pastoral systems in Northern Tanzania. *Ticks and Tick-borne Diseases*, Volume 6, pp 587–591.
- Kimaro, E.G. and Chibinga, O.C., 2013. Potential impact of climate change on livestock production and health in East Africa: A review. *Livestock Research for Rural Development* Volume 25,7 pp. 116.
- Kipronol, K.A., 2009. The Epidemiology and Control of East Coast fever and other Vector-borne Diseases, Perceptions of the Pastoral Communities in Valley Province, Kenya.
- Kivaria, F.M., 2006. Estimated direct costs associated with tick-borne diseases on cattle in Tanzania. *Tropical Animal Health and Production* 38, pp 291 – 299.
- Kivaria, F.M., Kapaga, A.M., Mbassa, G.K., Mtui, P.F. and Wani, R.J., 2012. Epidemiological perspectives of ticks and tick-borne diseases in South Sudan. Cross-sectional survey results. Retrieved 1st January, 2014, from <http://www.ojvr.org/index.php/ojvr/article/viewFile/400/693>.
- Komwihangilo, D.M., Mkonyi, J.I., Masao, D.F., Moto, E., Mahiza, A.M.O. and Mnzava, V., 2009. Performance and challenges in the management of improved cattle in agro-pastoral systems of Central Tanzania. *Livestock Research for Rural Development*, Volume 21 Article 5.
- Laisser, E.L.K., Kipanyula, M.J., Msalya, G., Mweha, E.D., Mdegela, R.H., Karimuribo, E.D., Kusiluka, L.J.K., Mwilawa, A.J. nd Chenyambuga, S.W., 2014. Tick burden and prevalence of *Theileria parva* infection in Tarime zebu cattle in the lake zone of Tanzania. *Tropical Animal Health and Production*, 46, Article 8 pp 1397–1406.
- Laisser, E.L.K., Chenyambuga, S.W., Msalya, G., Kipanyula, M.J., Mdegela, R.H., Karimuribo, E.D., Mwilawa, A.J. and Kusiluka, L.J.K., 2015. Knowledge and perception on ticks, tick-borne diseases and indigenous cattle tolerance to East Coast fever in agro pastoral communities of Lake Zone in Tanzania. *Livestock Research for Rural Development*, Volume 27 Article 4. 1<sup>st</sup> April, 2015. Available on line at: <http://www.lird.org/lird27/4/lais27064.html>.
- Laisser, E.L.K., Chenyambuga, S.W., Karimuribo, E.D., Msalya, G., Kipanyula, M.J., Mwilawa, A.J., Mdegela, R.H., Kusiluka, L.J.M. and Gwakisa, P.S., 2016. Tick burden and acquisition of immunity to *Theileria parva* by Tarime cattle in comparison to Sukuma cattle under different tick control regimes in the Lake zone of Tanzania. *Journal of Veterinary Medicine and Animal Health*, Volume 8, Article 3, pp 21-28.

- Latif, A.A., 1984. Resistant to natural tick infestations in different breeds of cattle in Sudan. *Insect Science and its Application*, Volume 5, pp 95 - 97.
- Latif, A.A. and Pegram, R.G., 1992. Naturally acquired host-resistance in tick control in Africa, *Insect Science Application*, Volume 13, pp 505–513.
- Martins, S.B., Di Giulio, G., Lynen, G., Peters, A. and Rushton, J., 2010. Assessing the impact of East Coast Fever immunisation by the infection and treatment method in Tanzanian pastoralist systems, *Preventive Veterinary Medicine* 97, pp 175–182.
- Marufu, M.C., 2008. Prevalence of ticks and tick borne diseases in cattle on communal rangelands in the highland areas of the Eastern Cape Province, South Africa. MSc. dissertation, University of Fort Hare.
- Mbati, P.A., Hlatshwayo, M., Mtshali, M.S., Mogaswane, K.R., De Waal, T.D. and Dipeolu, O.O., 2002. Ticks and tick-borne diseases of livestock belonging to resource-poor farmers in the eastern Free State of South Africa, *Experimental and Applied Acarology* 28, 4, pp 217–224.
- Minjauw, B. and McLeod, A., 2003. Tick-borne diseases and poverty. The impact of ticks and tick-borne diseases on the livelihood of small-scale and marginal livestock owners in India and eastern and southern Africa. Research report, DFID Animal Health Programme, Centre for Tropical Veterinary Medicine, University of Edinburgh, UK.
- MLFD, 2011. Ministry of Livestock and Fisheries Development. Livestock Sector Development Programme. The United Republic of Tanzania, Dar es Salaam, pp 1–2.
- MLFD, 2015. Ministry of Livestock and Fisheries Development. Tanzania Livestock Modernization Initiatives (TLMI) for the period 2015/2016–2020/2021. Statement by the President of United Republic of Tanzania. July 2015. Available at <http://www.mifugouvuvu.go.tz>.
- Msanga, Y.N., Mmbaga, S.H. and Msechu, J.K., 2001. Farm animal breeds and strains of Tanzania. In: *Farm Animal Genetic Resources. Proceedings of SUA-MU-ENRECA Project Workshop*. (Ed Kifaro, C. G. et al) 6<sup>th</sup> August 2001, Morogoro Tanzania, pp 27–34.
- Msanga, Y.N., Mwakilembe, P.L. and Sendalo, D., 2012. The indigenous cattle of the Southern Highlands of Tanzania distinct phenotypic features, performance and uses, *Livestock Research for Rural Development*, Volume 24, Article 7.
- Mugisha, A., McLeod, A., Percy, R. and Kyewalabye, E., 2005. Strategies, effectiveness and rationale of vector-borne disease control in the pastoralist system of south-west Uganda, *Tropical Animal Health and Production* 37, pp 479 – 489.
- Musoke, R.A., Tweyongyere, R., Bizimenyere, E., Waiswa, C., Mugisha, A., Biryomumaishe, S. and MacHardy, N., 2004. Treatment of East Coast fever of Cattle with a Combination of Parvaquone and Frusemide, *Tropical Animal Health and Production*, Volume 36, Article 3, pp 233 – 245.
- Mwambene, P.L., Katule, A.M., Chenyambuga, S.W. and Mwakilembe, P.A., 2012. Fipa cattle in the south western highlands of Tanzania, socio-economic roles, traditional management practices and production constraints, *Animal Genetic Resources* 6, pp 1–12.
- Norval, R.I., Sutherst, R.W., Kurki, J., Gibson, J.D. and Kerr, J.D., 1988. The effect of the brown - ear tick *Rhipicephalus appendiculatus* on the growth of Sanga and European breed cattle. *Veterinary Parasitology*, Volume 30, pp 149 -164.
- Ndung'u, S.G., Brown, C.G.D. and Dolan, T.T., 2005. In vivo comparison of susceptibility between *Bos indicus* and *Bos Taurus* cattle types to *Theileria parva* infection, *Onderstepoort Journal of Veterinary Research* 72, pp 13–22.
- Ngowi, E.E., Chenyambuga, S.W. and Gwakisa, P.S., 2008. Socio-economic values and traditional management practices of Tarime zebu cattle in Tanzania, *Livestock Research for Rural Development*, Volume 20, Article No. 6. Available at <http://www.lrrd.org/lrrd20/6/ngow20094.htm>. Accessed on 29/11/2013.
- Norval, R.A.I., Perry, B.D. and Young, A.S., 1992. The epidemiology of theileriosis in Africa, Academic Press, London, pp 481.
- Oura, C.A.L., Bishop, R., Wampande, E.M., Lubega, G.W. and Tait, A., 2004. The persistence of component *Theileria parva* stocks in cattle immunized with the live vaccine against East Coast fever in Uganda, *Parasitology* 129, pp 27–42. Patel, E., Mwaura, S., Kiara, H., Morzaria, S., Peters, A., Toye, P. 2016, 1994. Production and dose determination of the Infection and Treatment Method (ITM) Muguga cocktail vaccine used to control East Coast fever in cattle. *Ticks and Tick-borne Diseases*.
- Perry, B., 1994. The role of epidemiology and economics in the control of tick-borne diseases of livestock in Africa, *The Kenyan Veterinarian*, Volume 18, 2, pp.7–10.
- Rechav, Y., 1987. Resistance of Brahman and Hereford cattle to African ticks with reference to serum gammaglobulin levels and blood composition, *Experimental Applied Acarology*, Volume 3, pp 219 - 232.
- Scholtz, M.M., Spickett, A.M., Lombard, P.E. and Enslin, C.B., 1991. The effect of tick infestation on the productivity of cows of three breeds of cattle. *Onderstepoort Journal of Veterinary Research*, Volume 58, pp 71 - 74.
- Swai, E.S., Mbise, A.N., Kessy, V., Kaaya, E., Sanka, P. and Loomu, P.M., 2005. Farm constraints, cattle diseases perception and ticks management practices in Pastoral Maasai community, Ngorongoro, Tanzania, *Livestock Research for Rural development*, Volume 17, Article 17, Available from <http://www.lrrd.org/lrrd17/2/swai17017.htm>.
- Swai, E. S., Karimuribo, E. D., Kambarage, D. M., Moshy, W. E. and Mbise, A. N., 2007. A comparison of seroprevalence and risk factors for *Theileria parva* and *Theileria mutans* in smallholder dairy cattle in the Tanga and Iringa regions of Tanzania, *The Veterinary Journal*, Volume 174, pp 390 – 396.
- Tarimo, M.A., 2013. Studies on prevalence of East Coast fever among cattle in Kilosa District, MSc. Dissertation, Sokoine University of Agriculture
- Turner, H.G., 1975. The tropical adaptation of beef cattle: an Australian study. *World Animal Review* FAO, Volume 13, pp 16–21.
- Rege, J.E.O. and Tawah, C.L., 1999. The state of African cattle genetic resources II, Geographical distribution, characteristics and uses of present-day breeds and strains, *Animal Genetic Resources Information*, Volume 26, pp 1 – 25.
- Wambura, P.N., Gwakisa, P.S., Silayo, R.S. and Rugaimukamu, E.A., 1998. Breed-associated resistance to tick infestation in *Bos indicus* and their crosses with *Bos Taurus*, *Veterinary Parasitology* Volume 77, pp 63–70.
- Wharton, R.H., 1983. Tick-borne livestock diseases and their vectors. Acaricide resistance and alternative methods of tick control, *World Animal Review* FAO, Volume 36, pp 34–41.

## CHAPTER SIX

### 6.0 Research Output of the Thesis, General Conclusions and Recommendations

#### 6.1 Research Output of the Thesis

The overall objective was to establish whether Tarime cattle are tolerant to tick infestation and ECF infection. The research outputs in this thesis are summarized and concluded as follows:

Livestock diseases are the most important constraints to cattle production in the Lake zone regions of Tanzania. These are followed by shortage of forages and water during the dry season and shortage of grazing land. Among the diseases, tick-borne diseases rank first in the agro-pastoral communities of Lake Zone. The livestock farmers in the Lake zone have substantial knowledge on ticks and TBDs signs. Despite the extensive knowledge, most livestock farmers do not apply acaricide regularly to control TBDs due to economic reason and the belief that their animals can tolerate ticks and TBDs. Their perception toward ECF is that, it is not more important than other livestock diseases. This is a reflection of the capability of their animals to tolerate the disease. It is therefore, important that tick control strategies should be harmonized with the indigenous knowledge of the livestock farmers on tolerance of local zebu strains to ticks and tick-borne diseases (Paper I).

Observations of Tarime cattle populations at two geographical locations revealed that; although management of animals can alter tick infestation and reduce animal ability to succumb to the parasites, the animals' ability to withstand the diseases remains high. This is due to the fact that, all animals that tested positive for *T. parva* in both localities did not show any signs of illness, indicating that Tarime cattle can be infected with *T. parva* but



remain healthy and thus are potential carriers. Furthermore, the study has demonstrated that animals having high tick burden do not necessarily become infected with *T. parva*, the parasite that causes ECF. This is because some ticks do not harbour or do not carry the protozoan parasites causing ECF. High tick infestation and *T. parva* infection were found in Tarime cattle, but none of the animals examined showed either signs of ill-health as a result of tick infestation or clinical signs of ECF despite the fact that the DNA of *T. parva* was detected in 27.7 % of the animals sampled. It can be said that the Tarime zebu can be infected with *T. parva* but do not develop signs of ECF; hence, they may become a source of infection to other less tolerant ecotypes of indigenous cattle in mixed herds (Paper II).

The present study found differences in terms of tick burden between Tarime and Sukuma strains, whereby Tarime cattle carried significantly higher tick load compared to Sukuma cattle. Tarime strain was also different from Sukuma strain in terms of *T. parva* parasite prevalence and antibody percent positivity. The higher antibody levels but lower *T. parva* prevalence shown by Tarime strain compared to Sukuma strain suggests that animals belonging to Tarime strain are relatively tolerant to ECF compared to Sukuma. The study provides evidence to farmers' beliefs in the Lake zone of Tanzania regarding tolerance of Tarime strain compared to Sukuma strain. This paves a way for designing improvement programmes for the Tarime strain for sustainable utilization (Paper III).

The review study on the prevalence, control measure and tolerance of Tanzania Shorthorn Zebu cattle to East Coast fever in Tanzania revealed that ECF is not seen by most livestock keepers as the most serious disease compared to other TBDs. This is because TSHZ can be kept for long time with irregular or no tick control and manage to survive, despite the high tick burden and ECF infection rate. The review also shows that each society entrusts their strain for different reasons and they can compare their strain of

cattle with that of other society. Our study provides evidence for Tarime cattle from the Lake zone of Tanzania to be accepted by other livestock farmers due to its tolerance to ECF disease (Paper IV).

## **6.2 General Conclusion**

It can be concluded from the present study that Tarime cattle tolerate high tick infestation and East Coast fever infection than the Sukuma cattle which are also kept in the Lake Zone. It can also be further concluded that, once per month dipping (using Dominex acaricide) of indigenous cattle found in the Lake Zone is satisfactory for tick and ECF control under traditional livestock production system.

## **6.3 Recommendations**

Based on the findings obtained from this study, the following recommendations are made:

- i. Further, research is required, especially on genomic related studies for Tarime cattle to understand the genetic uniqueness of the strain and the mechanisms or genes which make the strain be able to tolerate ECF infection.
- ii. Community conservation programmes for the Tarime strain should be promoted.